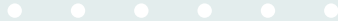




MPO BOUNDARY CHANGES

June 2023 - Chatham County - Board of Commissioners



RECAP

April 17th BOC Work Session

- MPO vs. RPO
- Census Data
- Boundary Changes and CAMPO Preferences

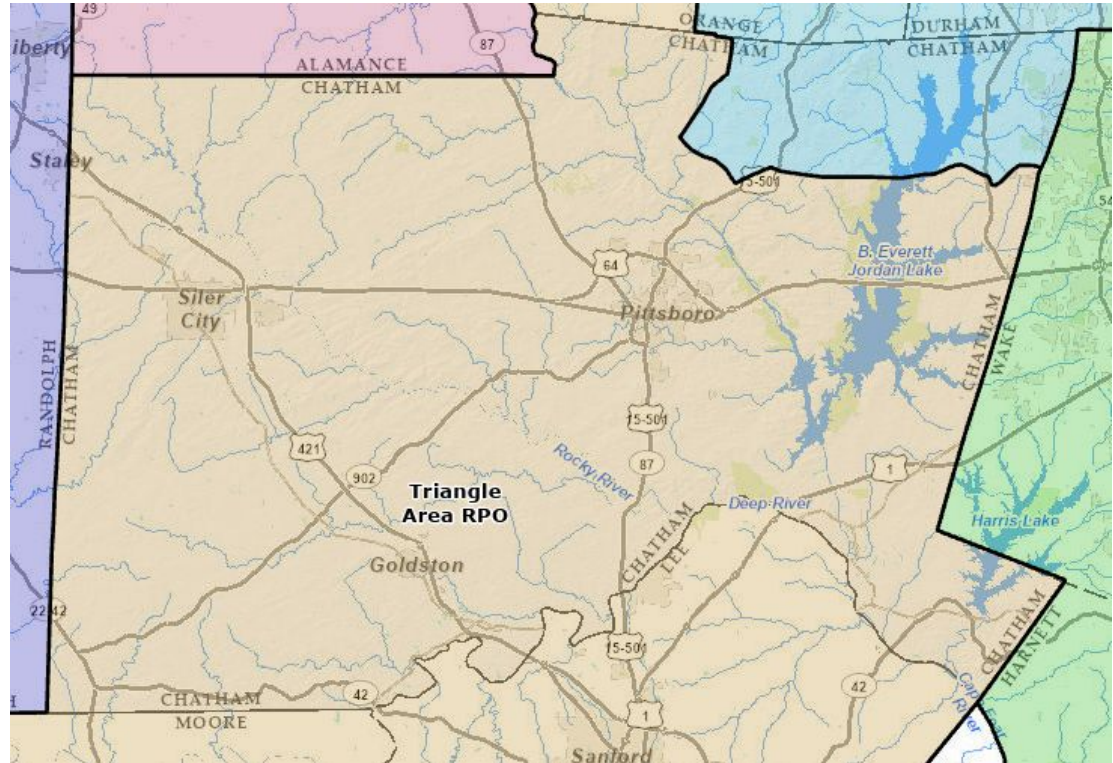


TABLE OF CONTENTS

01

DCHC MPO

Review two (2)
proposed alternatives

02

CAMPO

Proposed boundary
changes

03

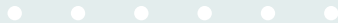
DISCUSSION

Address any remaining
questions

04

VOTE

Recommend a path
forward





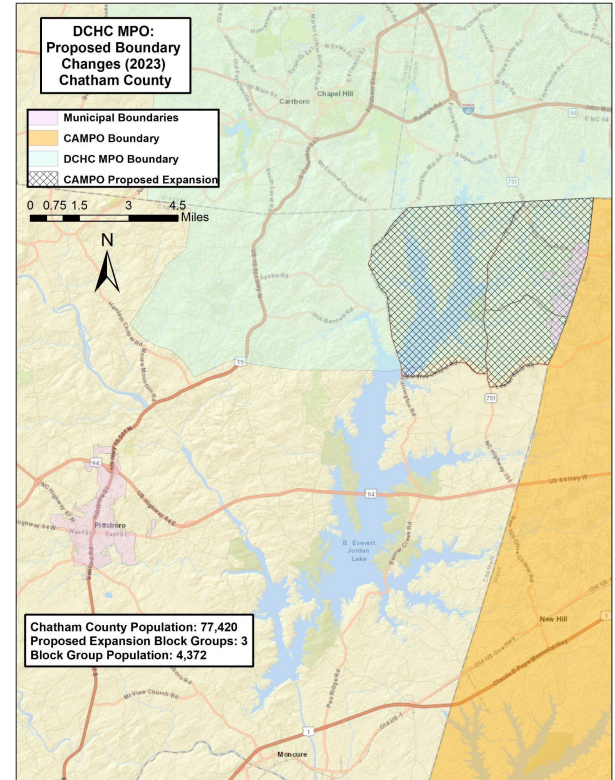
DCHC MPO

Doug Plachcinski, AICP, CFM
Executive Director
Durham-Chapel Hill-Carrboro
Metropolitan Planning Organization

DCHC MPO

DCHC proposes MPO boundary changes.

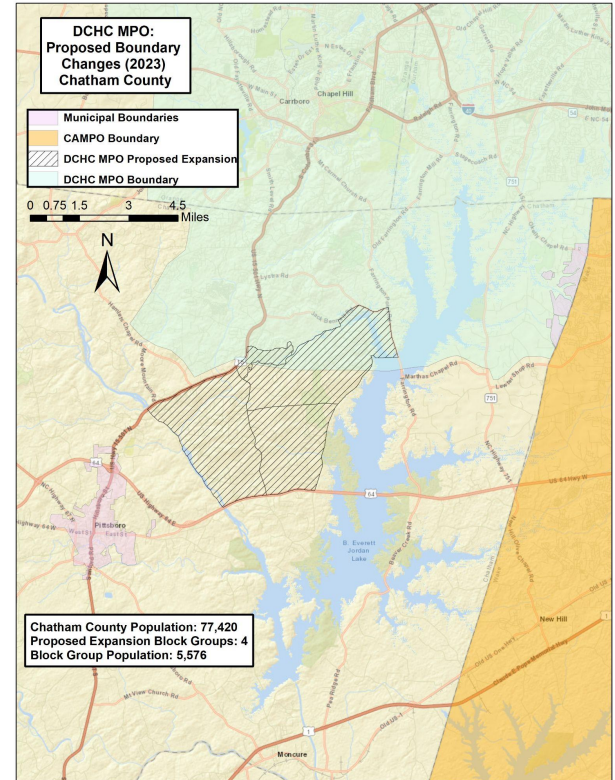
- Boundary changes should follow block groups for data consistency.
- Population is interpolated from NC State Demographer's annual estimates and Census geography.
- MPO membership dues are about \$1.25 per included resident.
- Both alternatives remove Block Group 3, Census Tract 207.04, Block Group 2 Census Tract 207.03, and Block Group 1 Census Tract 207.03. (REMOVING ~4,372)



DCHC MPO

DCHC proposes MPO boundary changes.

- MPO Planning Areas should approximate areas that will absorb growth over the next 20 years.
- Existing zoning patterns support housing development in the identified block groups.
- The Preserve at Jordan Lake is a significant housing center.
- Bynum also contains denser development and is classified as a village center in the Chatham Comprehensive Plan. Griffins Crossroads is a hamlet center on US 64.
- This will increase the annual membership contributions by ~\$1,500.

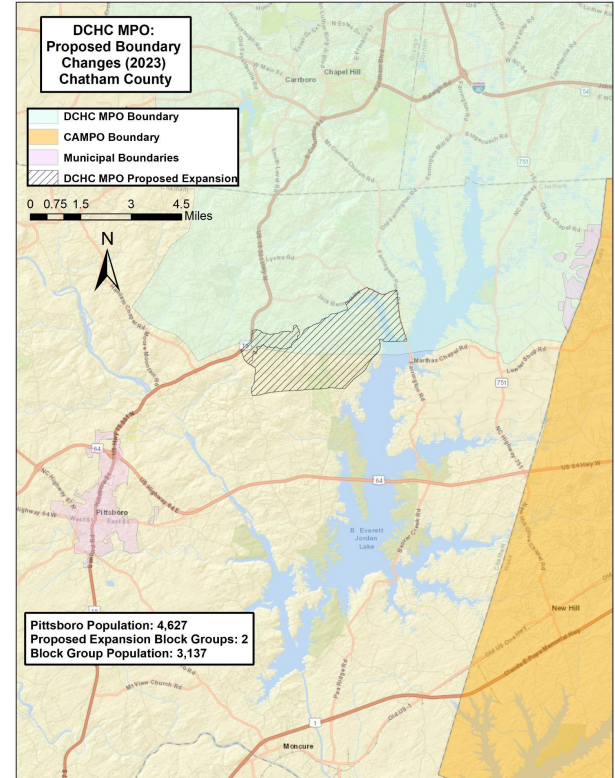


DCHC MPO



DCHC proposes MPO boundary changes.

At a minimum, the existing block groups should be completely added into DCHC's MPO planning area. This scenario reduces the annual membership contribution by about ~\$1,500.





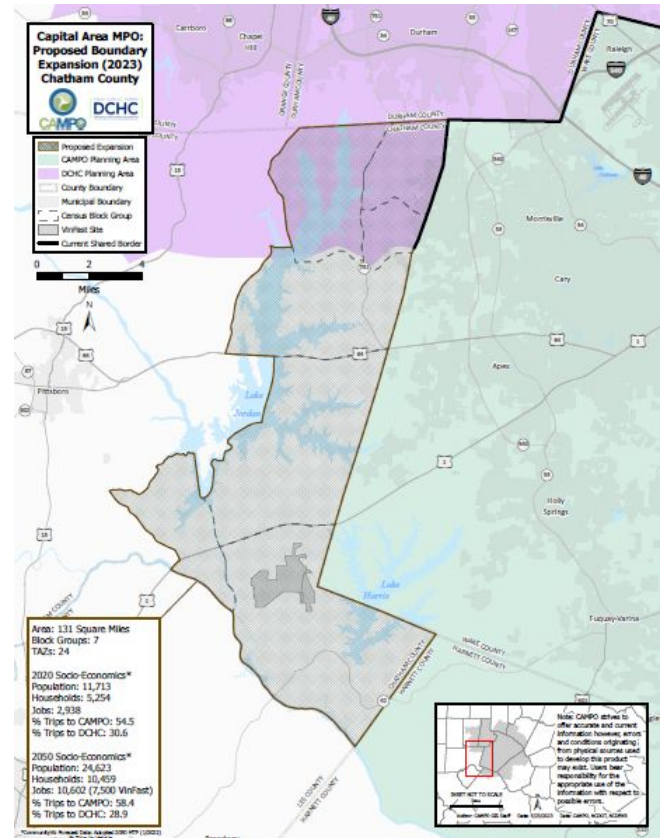
CAMPO

Chris Lukasina
Executive Director
Capital Area Metropolitan Planning
Organization

CAMPO

CAMPO proposes MPO boundary changes:

- Expansion into eastern Chatham County to account for current and anticipated growth
- Changes follow Census geography for ease of data availability, technical analysis, and compatibility.
- Expansion will better account for travel patterns in eastern Chatham County.
- Proposed area includes the Chatham portions of Cary and the Moncure area.





DISCUSSION

Questions for DCHC MPO, CAMPO, or
TARPO

STAFF

Doug Plachcinski

Durham-Chapel
Hill-Carrboro Metropolitan
Planning Organization



Chris Lukasina

Capital Area
Metropolitan Planning
Organization

Karyl Fuller

Triangle Area Rural
Planning Organization

VOTE

Requested vote on DCHC MPO and
CAMPO boundary changes.