

The Haw River Trail Corridor

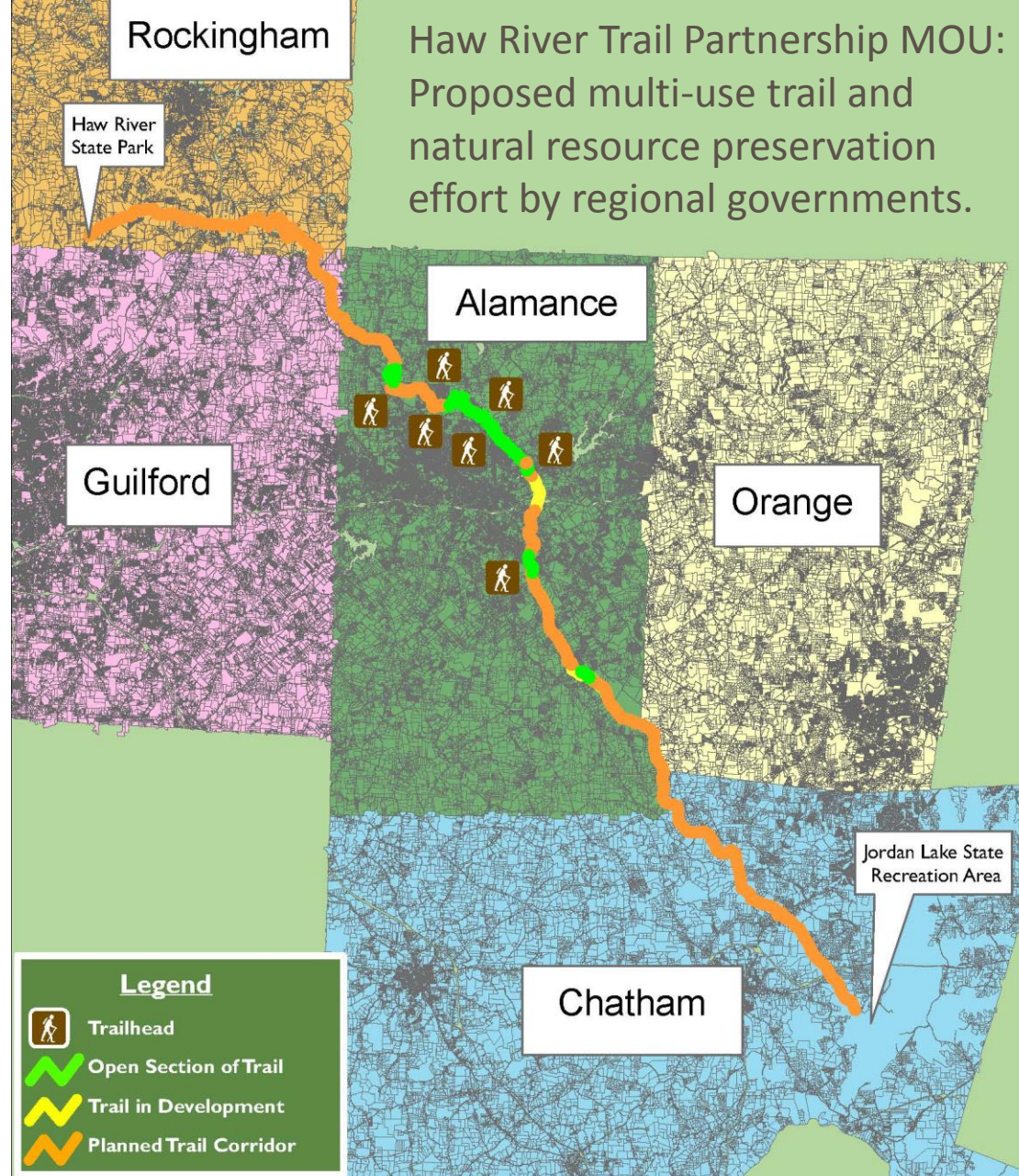


Chatham County Board of Commissioners Meeting 1/16/2018

Presented By

Guil Johnson, Haw River Trail Coordinator for Alamance County

Gretchen Smith, President of Friends of Lower Haw River State Natural Area



Haw River Trail Corridor
Haw River State Park to Jordan Lake State Recreation Area

Haw River Trail in Alamance County

Progress From 2006-2017





Haw River Trail in Alamance County

Progress From 2006-2017

Resources

- Hired a Haw River Trail Coordinator

Conservation

- 475 acres conserved
- 60+ trail easements
- 32,000 linear ft. Haw River conserved
- 15,000 linear ft. perennial streams conserved

Conservation in Alamance County all done with voluntary cooperation of willing landowners and local governments!

Haw River Trail in Alamance County

302,000 people visited Haw River Trail sites last fiscal year!

Paddle Trail

- Grown from 4 “formal” paddle accesses to 14
- Paddle Trail is now COMPLETE!
 - 40+ miles with 4 dam portages



Land Trail

- 20+ miles of land trail built
- Sustainable pace building 2 new miles per year
- 3 new parks with 15+ acres



Haw River Trail in Alamance County

Progress From 2006-2017

Facilities

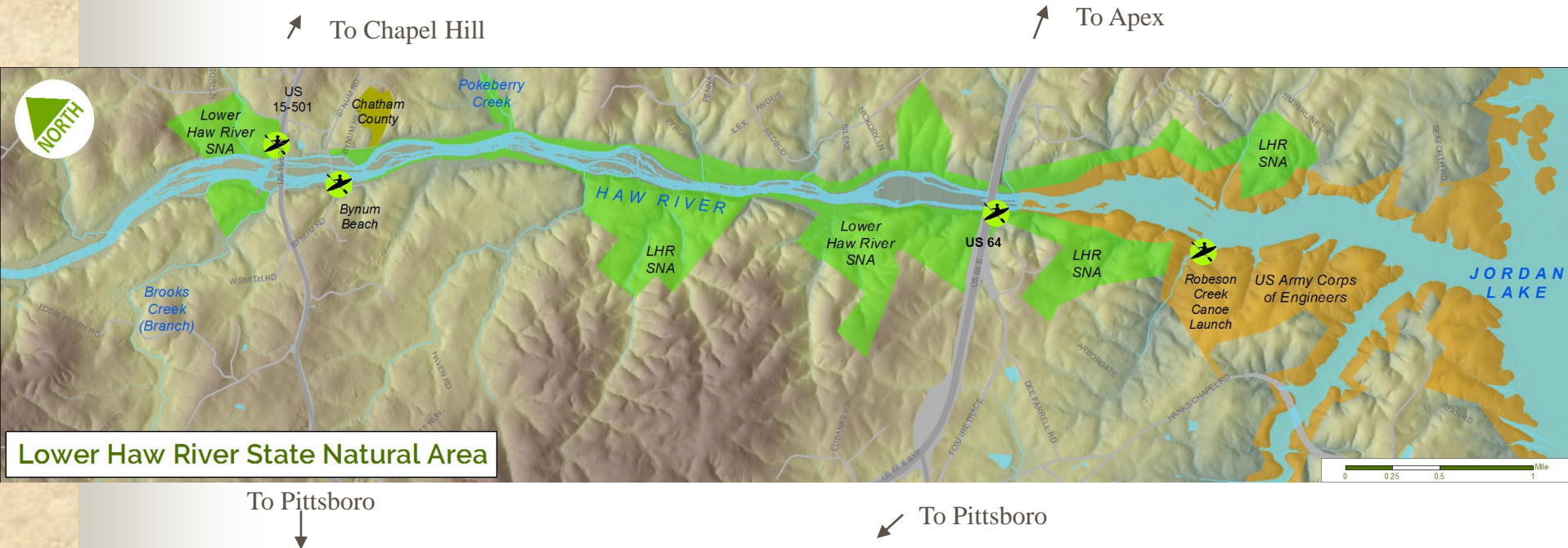
- Restrooms and vault toilets
- Gazebos
- Picnic tables and shelters
- Steel staircases for paddle access
- Parking lots with gates opened and closed daily
- Kiosks with signage
- Trashcans and recycle bins



Haw River Trail in Chatham County Plans Underway



Lower Haw River State Natural Area



- ❖ Added to State Park system in 2004
- ❖ Over 1,025 acres along both sides of Haw River in Chatham County
- ❖ Stretches from above US 15-501 near Bynum to below US 64 at Jordan Lake



Projects Underway in Chatham

- Recreational Trails Program Grant to county for Pokeberry Creek pedestrian bridge and trail
- Chatham County Recreation Grant to Friends of Lower Haw for paddle access kiosks and signage
- Triangle Community Foundation Grant to Friends of Lower Haw for Lower Haw Trails Master Plan



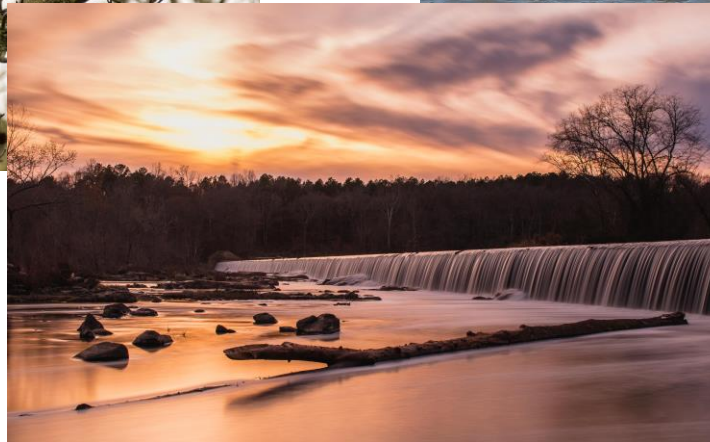
Lower Haw Trails Master Plan

- Funded by grant from Triangle Community Foundation's Support for Places Awareness Program
- Recreation Resources Service hired to develop plan and concept designs for future sustainable development of official hiking and paddle trails
- Collaborating with State Parks, other stakeholders, general public
- First draft in January, final plan by June 2018

Friends of Lower Haw Contact: Gretchen Smith

www.lowerhaw.org

lowerhawfriends@gmail.com



Photos by Chris Whitted



Haw River Trail Contact: Guil Johnson

www.thehaw.org

Guil.Johnson@alamance-nc.com