



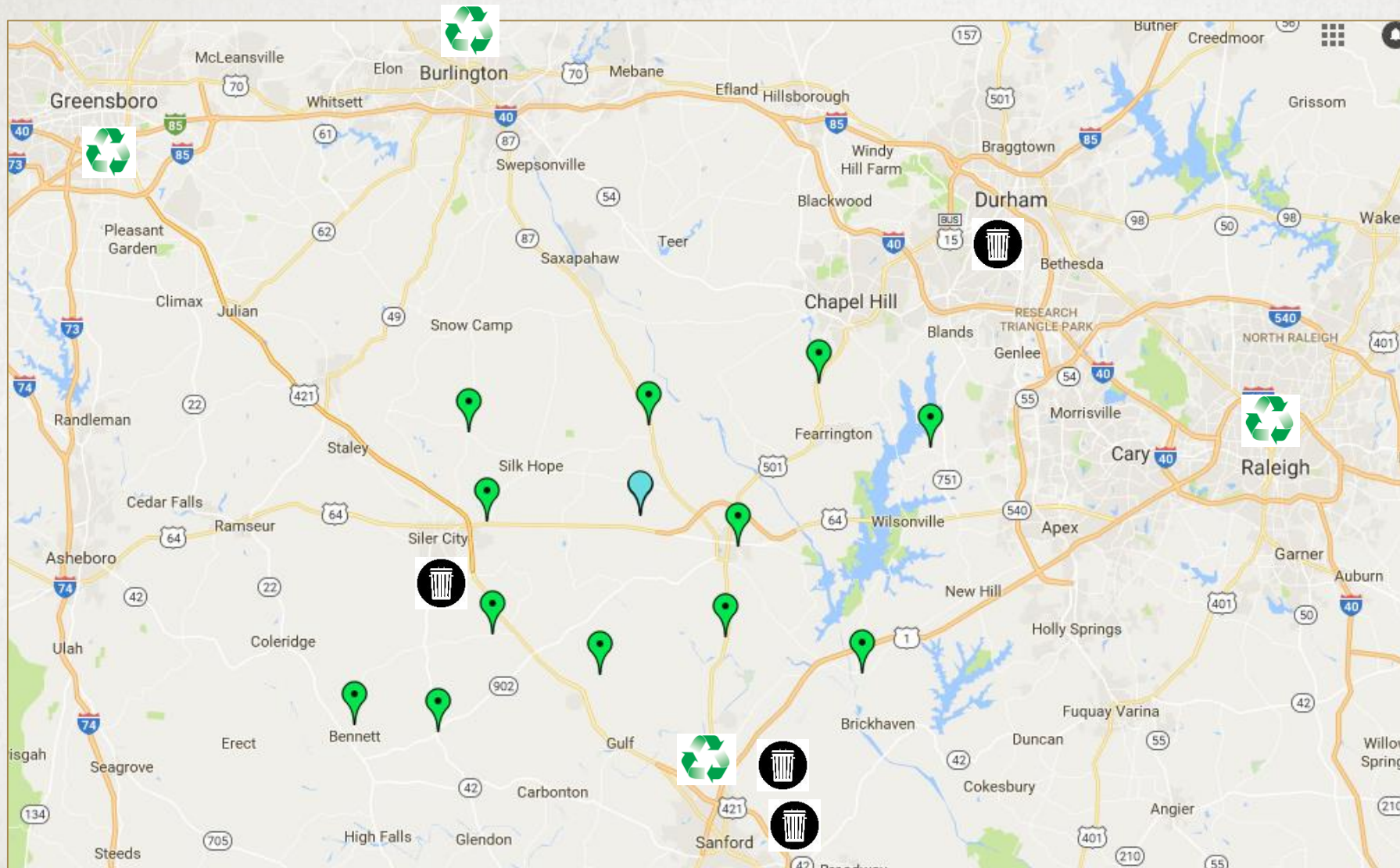
CHANGES TO RECYCLING IN CHATHAM COUNTY





HOW DO WE RECYCLE NOW?



Pittsboro Collection Center Current

WHERE DO RECYCLABLES AND TRASH GO NOW?



Legend	
	Collection Centers
	Main Office
	Recycling Market
	Transfer Station for trash



**Mixed
Recycling**

Glass bottles and
jars recycled
separately

MIXED RECYCLING BENEFITS

- Easier for residents
- Increase recycling
- Decrease disposal costs
- Improve efficiencies for County

PITTSBORO COLLECTION CENTER

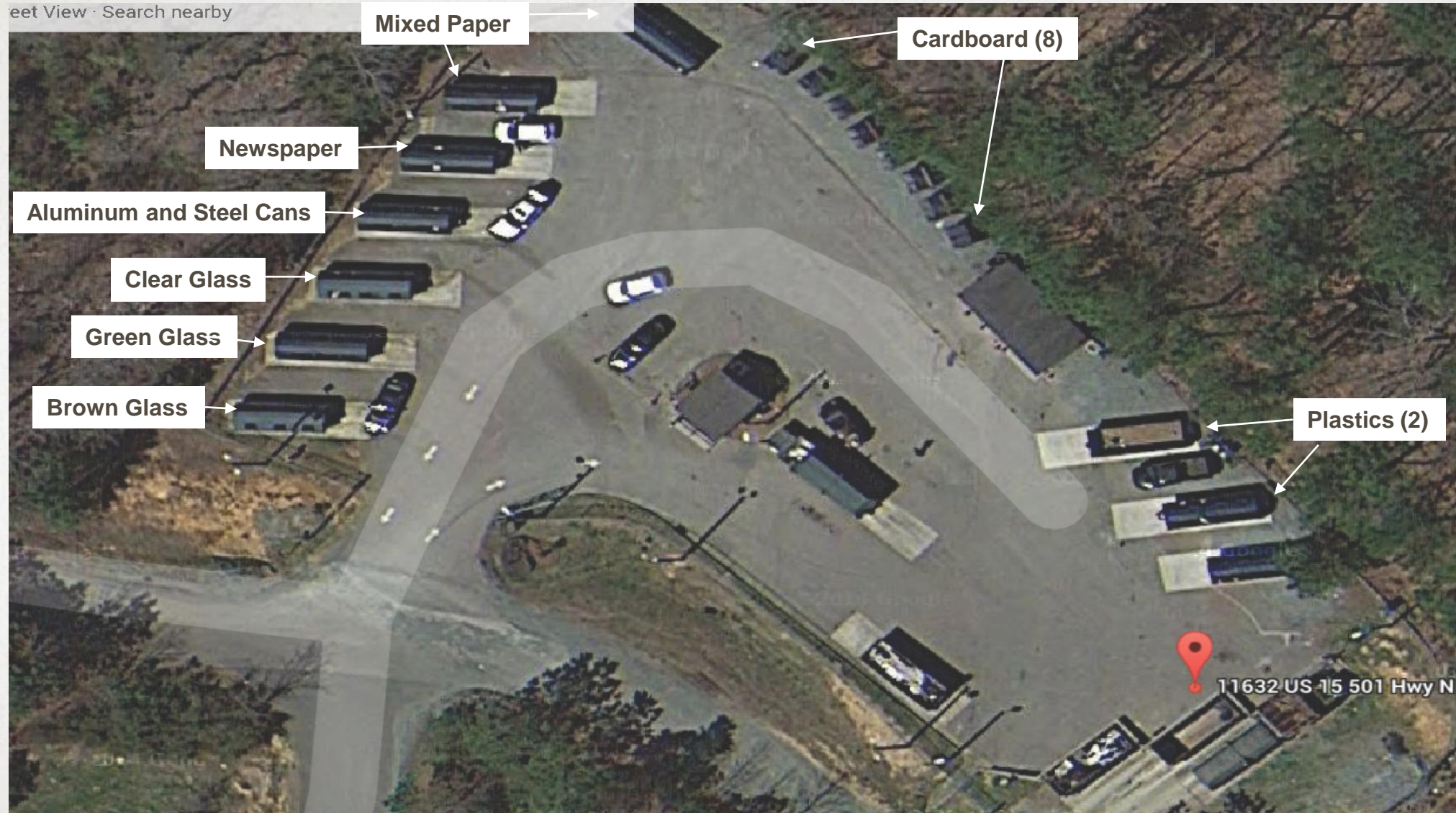


Current

After Mixed Recycling



COLE PARK COLLECTION CENTER- CURRENT



COLE PARK COLLECTION CENTER- MIXED RECYCLING



BENEFIT: INCREASE RECYCLING

RECYCLE MORE ITEMS

- Pizza boxes- must be clean and free of food
- Plastics- plastic to-go containers
- Rigid Plastics- buckets, baskets, toys, etc.



MORE PARTICIPATION

- Making recycling easier = more people recycling
- Upcoming study: Does providing someone with a recycling bin lead them to start recycling? (April)
- Expect 20% increase in recycling tonnage.



BENEFIT: DECREASE DISPOSAL COSTS



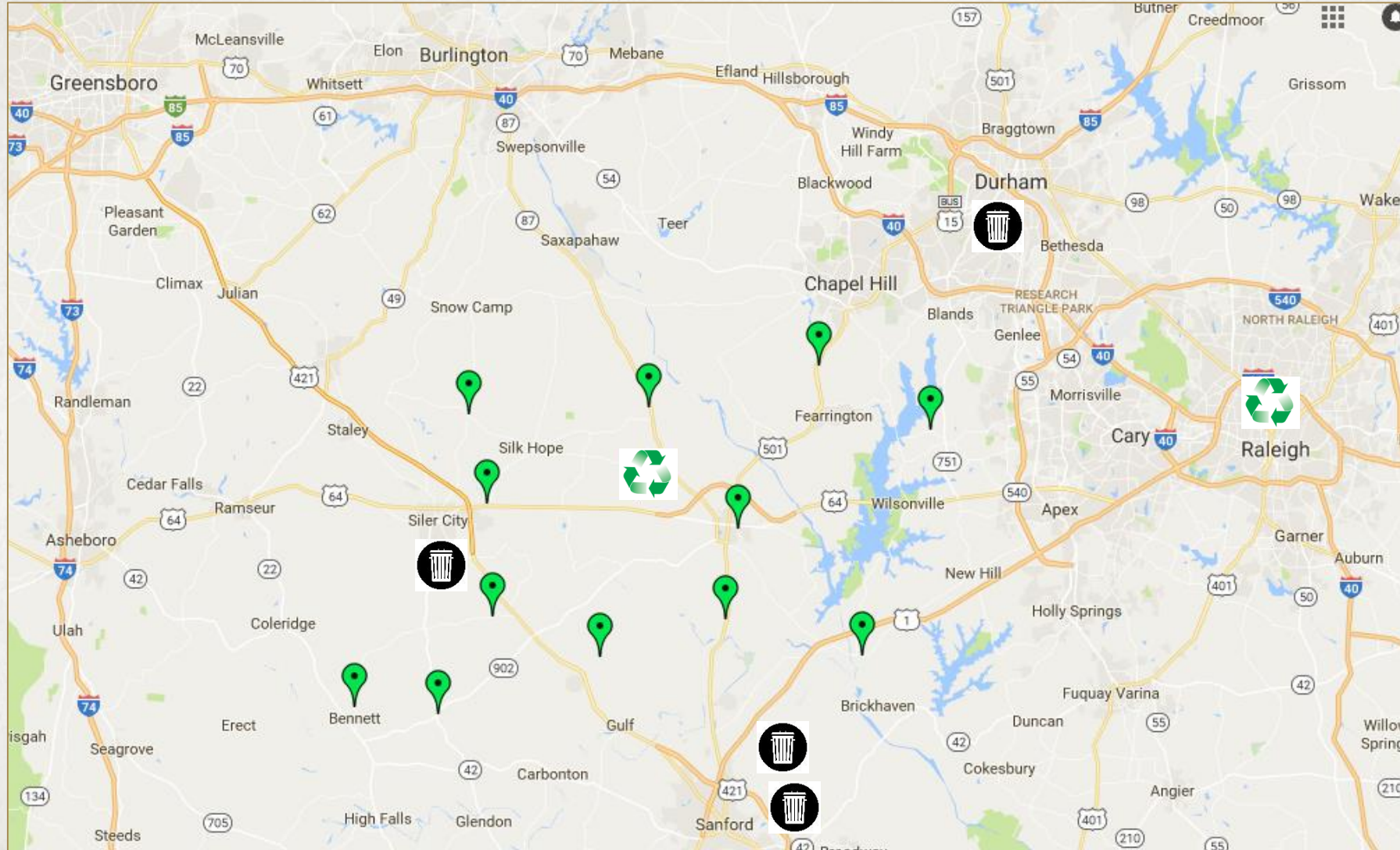
**We pay for trash disposal.
We get paid for recyclables.**

BENEFIT: IMPROVE EFFICIENCIES FOR COUNTY

- Hub and spoke system
 - All mixed recyclables hauled are compacted
- Reduce number of hauls
 - Current - 9
 - Mixed Recycling - 5 (estimate)
- Reduce transportation
 - Fewer trips to fewer locations



WHERE WILL MIXED RECYCLING GO?



Legend



Collection Centers



Main Office



Recycling Market



Transfer Station for trash

GETTING THE WORD OUT

- Flyer included with 2017 decals
- Collection Center attendants
- Newspaper, Chatham Chatlist, local publications
- Website, e-notify, social media

Chatham County Solid Waste and Recycling 2017 Decals and Updates Recycling just got easier in Chatham County!



Starting soon, when you use the Collection Centers, most of your household recyclables will be put together in the "Mixed Recycling" container - cardboard, paper, aluminum cans, steel cans, and plastics. Glass bottles and jars will continue to be collected in a separate container, but all colors can be combined - brown, clear, blue, and green glass.

See below to learn about which materials can and cannot be recycled. Visit our website for a more detailed list of items: www.chathamnc.org/recycle

Remember: you can always ask the attendant when you are at the center!

Put in **Mixed Recycling**



Aluminum Cans
No foil or trays



Steel Cans
No scrap metal



Cardboard and Pizza Boxes
No food or heavy grease



Office Paper, Newspaper, Magazines, Paperbacks, Paper Boxes, Paper Cartons



Plastic Bottles, Plastic Tubs, Plastic To-Go Containers
Leave caps and lids on
No liquid or food waste
No containers that had hazardous materials (motor oil, paint, etc.)



Rigid Plastics
No electronics
Must fit in 96 gal cart
Minimum metal

Remove recyclables from plastic or paper bag. All items must be loose.

DO NOT put in Mixed Recycling



Glass must go in the Glass container



No plastic bags



No Styrofoam



No paper towels



No shredded paper



No aluminum trays



No aluminum foil



No hoses



No hazardous containers



THANK YOU