



*Chatham County Comprehensive Transportation  
Plan*

September 19, 2016



## *Purpose of tonight's presentation*

- Present the draft Chatham County Comprehensive Transportation Plan
- Ask for consideration of adoption

# *Comprehensive Transportation Plan Overview*

- Is a Long-Range, multimodal transportation plan (highway, public transportation/rail, bicycle and pedestrian).
- Is developed cooperatively with NCDOT, the RPO/MPO, County and Municipal stakeholders.
- Emphasizes the local land development plan as well as community and statewide goals such as the protection of Strategic Corridors.
- Is only a **Concept Plan**.
- Is not fiscally constrained.

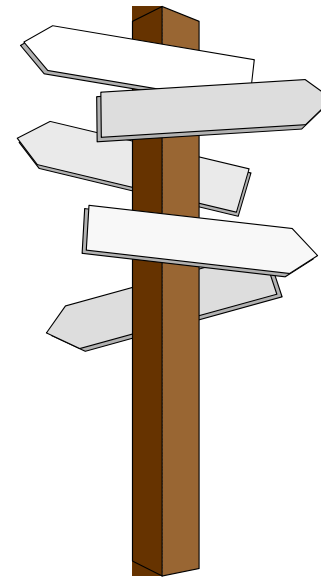
*It is important to note that CTP proposals are **Concepts** and any project will go through a rigorous environmental process before final alignments or designs can be determined.*



# *Why a Comprehensive Transportation Plan*

**§ 136-66.2. Development of a coordinated transportation system and provisions for streets and highways in and around municipalities.**

Each municipality, not located within a metropolitan planning organization (MPO) and each MPO, with the cooperation of the Department of Transportation, shall develop a comprehensive transportation plan that will serve present and anticipated travel demand in and around the municipality.



## *Past Plans*

County: 1983

(1996 revision was never adopted)

Goldston: (included in county plans above)

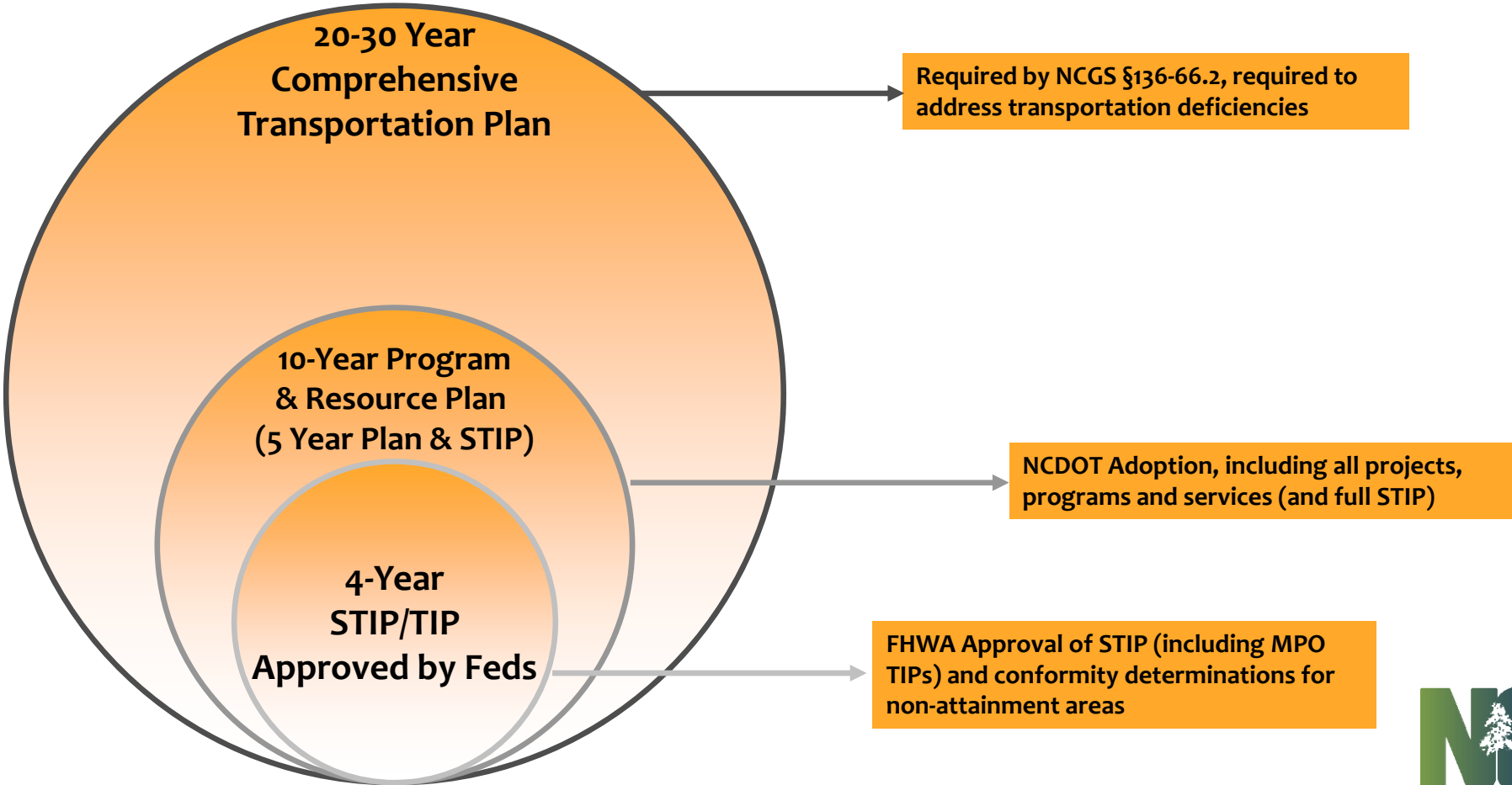
Siler City: 1996

\*\*\*Pittsboro: 2011

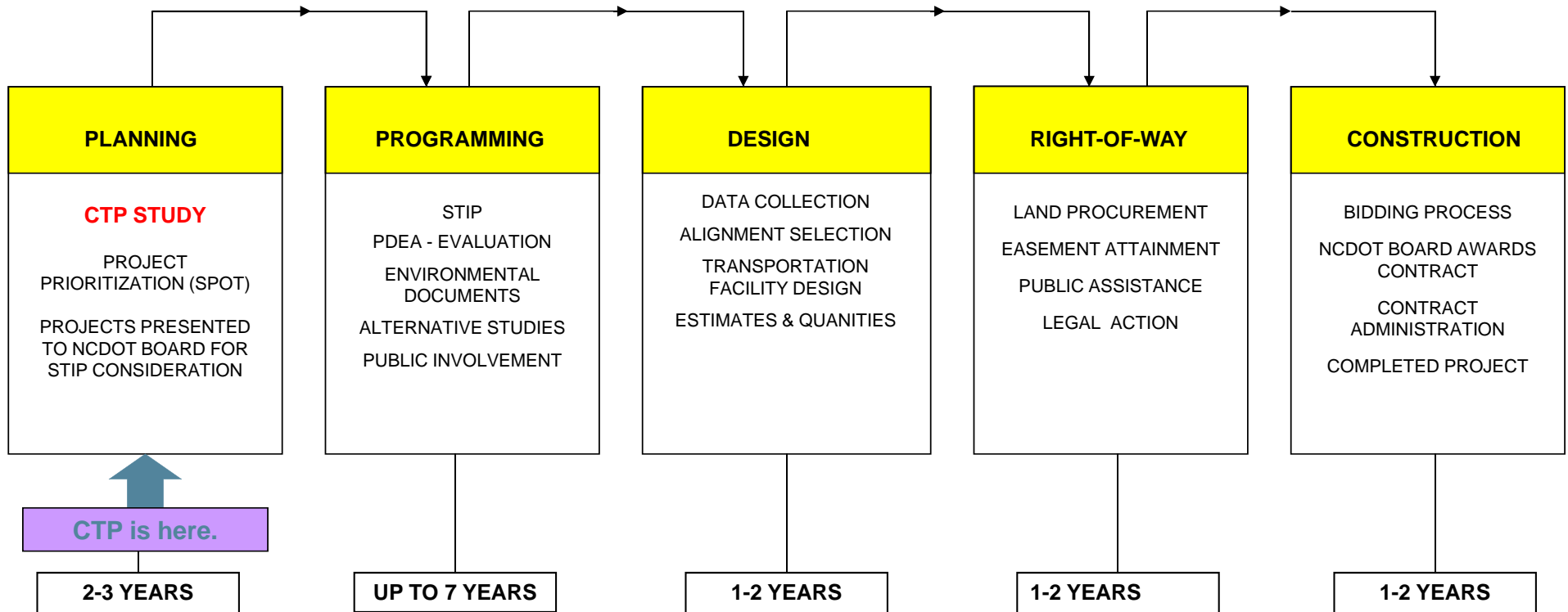
(includes Chatham Park & not included in this effort)



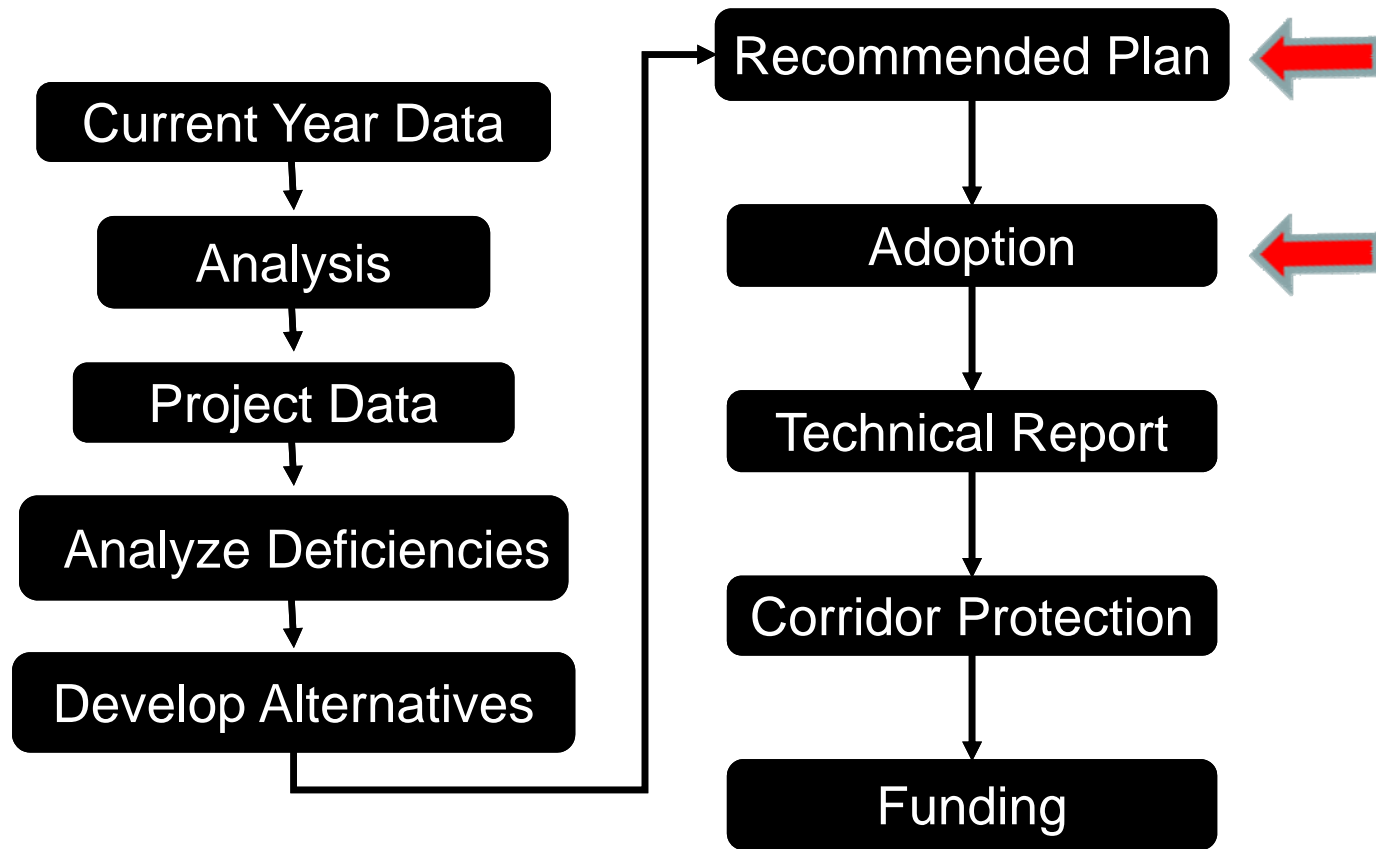
# Transportation Planning Framework - RPOs



# Typical Stages of NCDOT Project Development



## Chatham County CTP Process



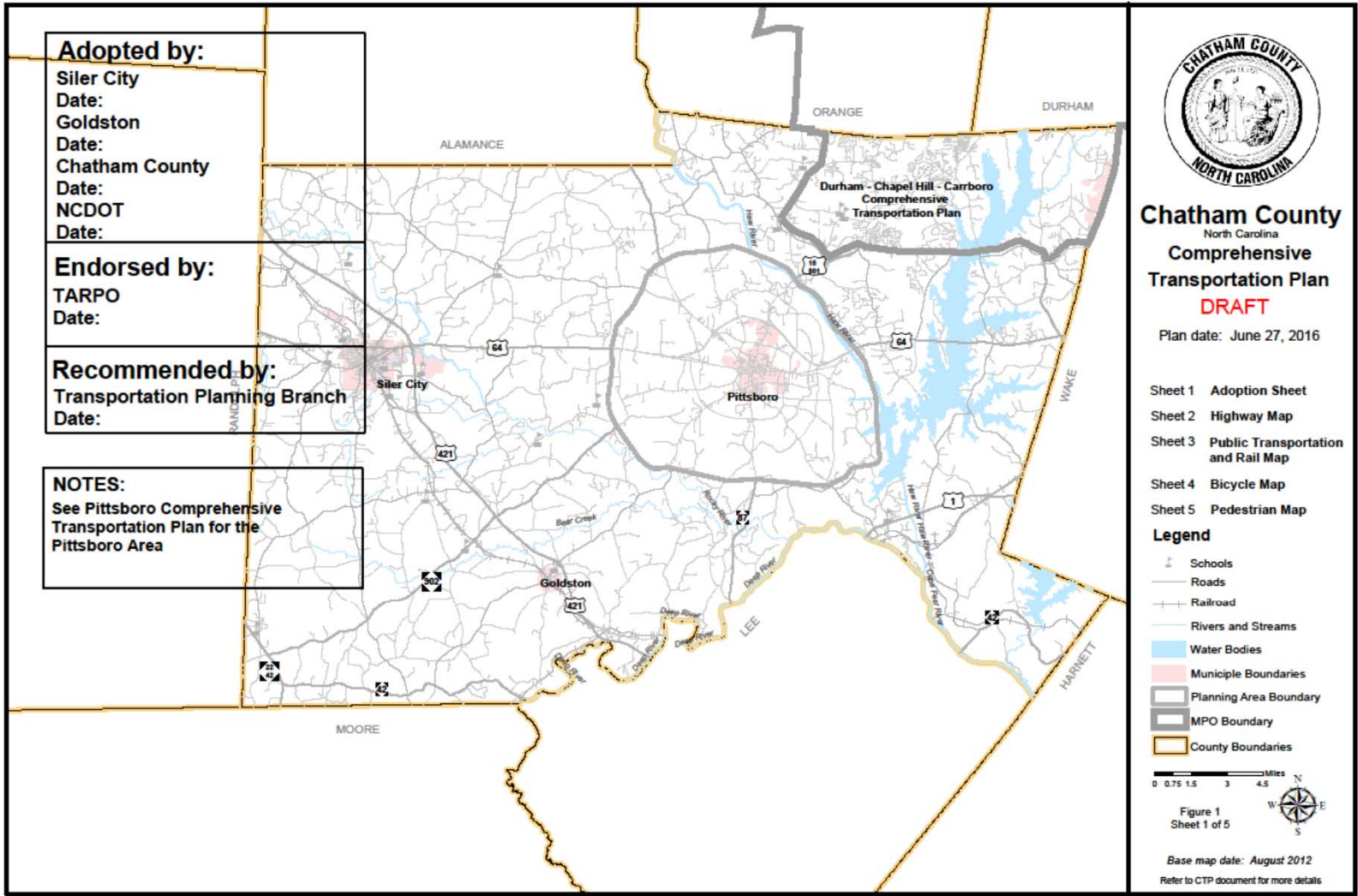


# *Public Comment*

- June 21-23
- Five comments from the public
  - Widen NC 902, shoulders are too small
  - Bus Route from Pittsboro to UNC\*
  - Need better signs on US 421
  - Pittsboro Traffic Circle\*
  - No more roundabouts
  - Pittsboro Loop is needed\*

\*= Pittsboro not included in plan at this time





**Adopted by:**

Siler City  
Date:  
Goldston  
Date:  
Chatham County  
Date:  
NCDOT  
Date:

**Endorsed by:**

TARPO  
Date:

**Recommended by:**

Transportation Planning Branch  
Date:

**NOTES:**

See Pittsboro Comprehensive Transportation Plan for the Pittsboro Area



**Chatham County**  
North Carolina  
**Comprehensive Transportation Plan**  
**DRAFT**

Plan date: June 27, 2016

- Sheet 1 Adoption Sheet
- Sheet 2 Highway Map
- Sheet 3 Public Transportation and Rail Map
- Sheet 4 Bicycle Map
- Sheet 5 Pedestrian Map

**Legend**

- Schools
- Roads
- Railroad
- Rivers and Streams
- Water Bodies
- Municipality Boundaries
- Planning Area Boundary
- MPO Boundary
- County Boundaries

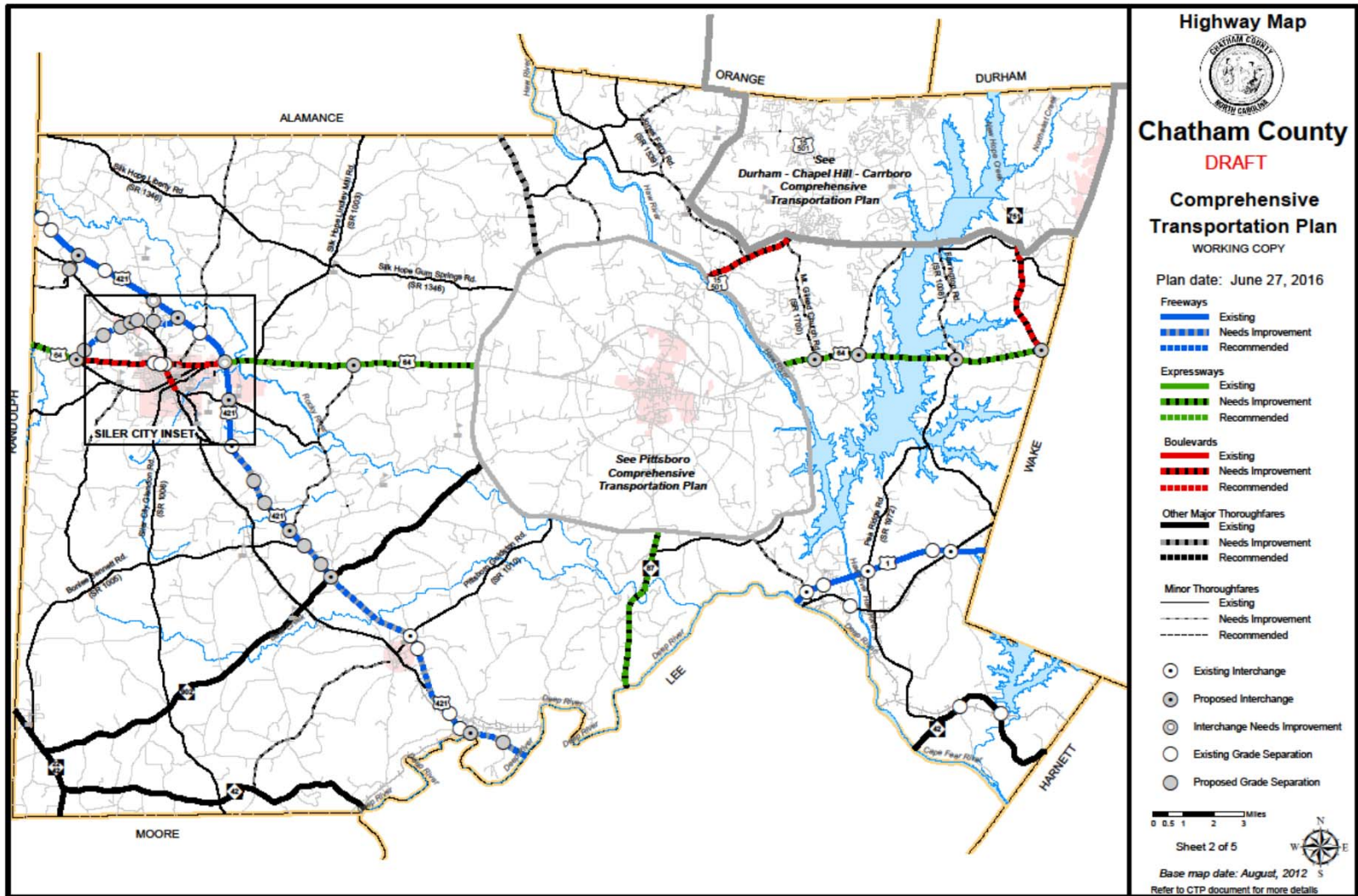


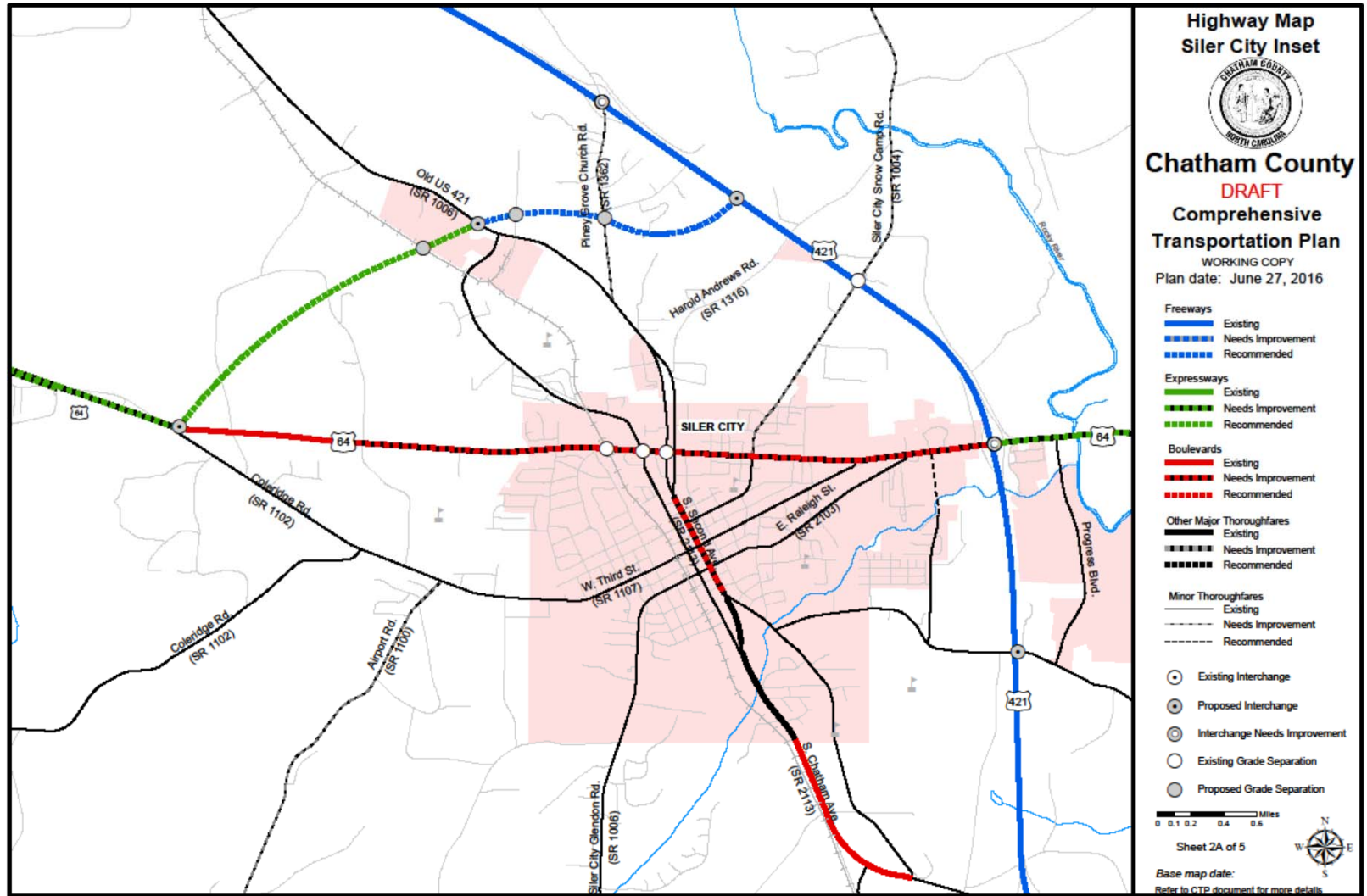
Figure 1  
Sheet 1 of 5

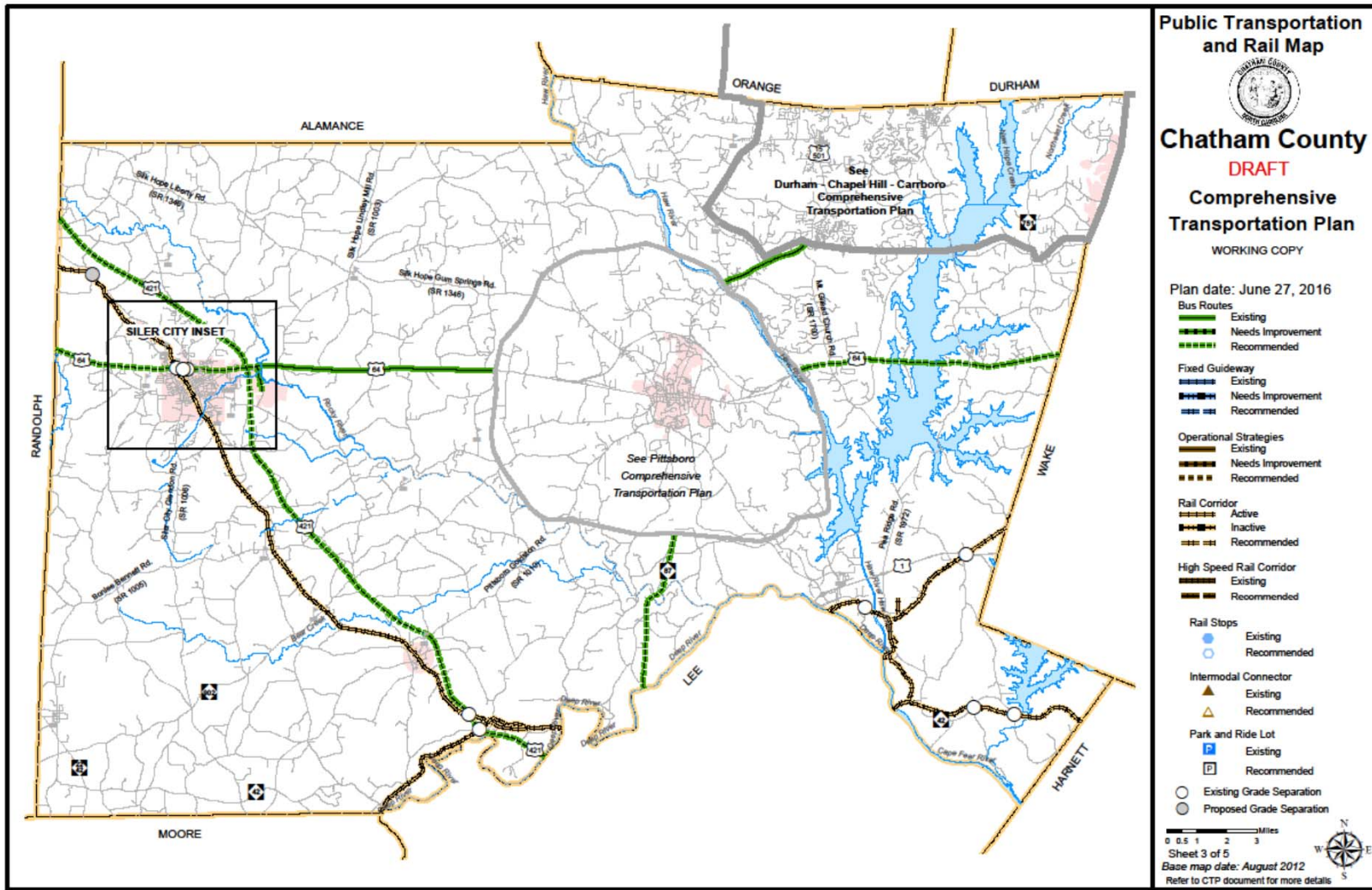
Base map date: August 2012  
Refer to CTP document for more details

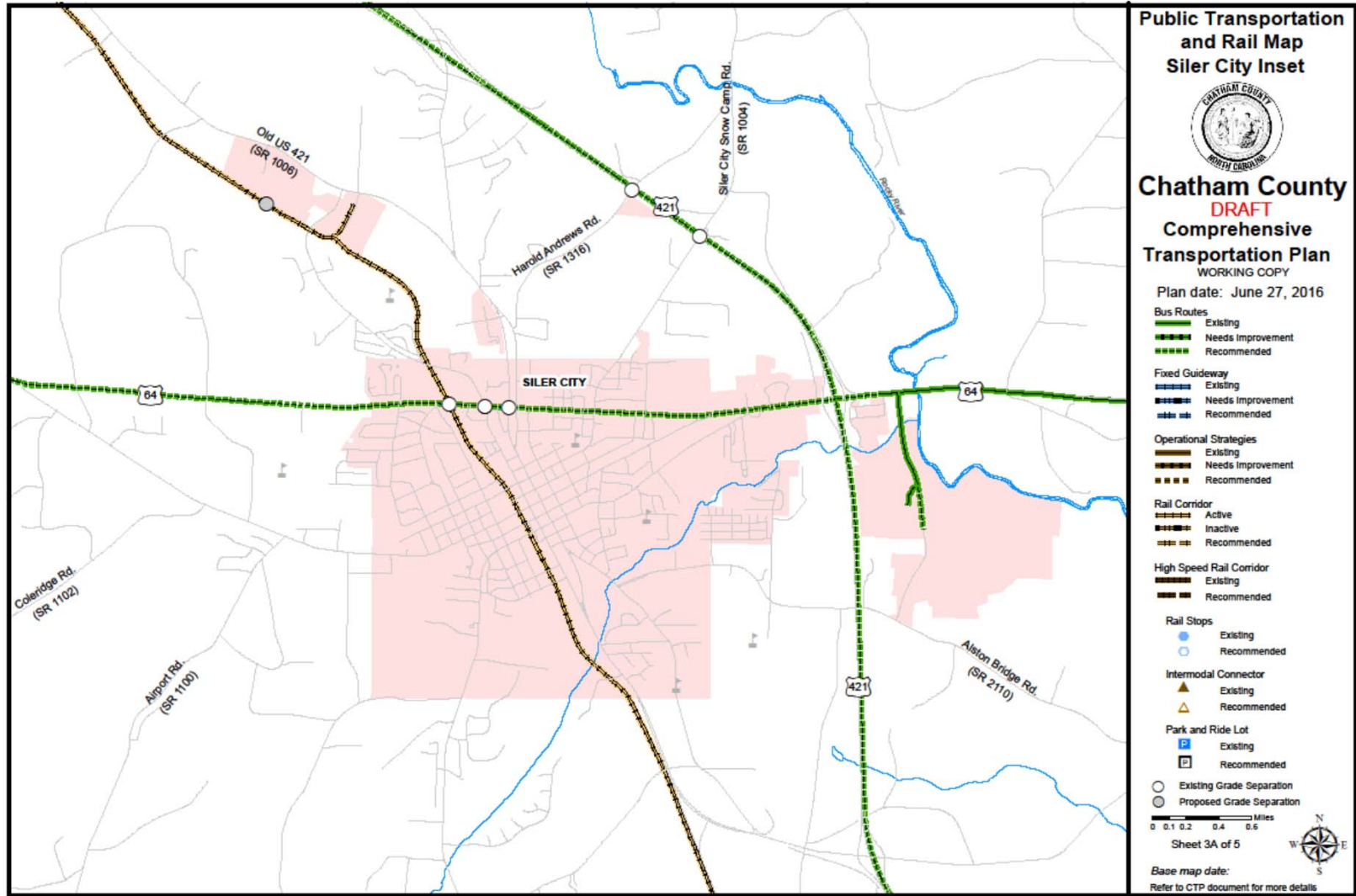


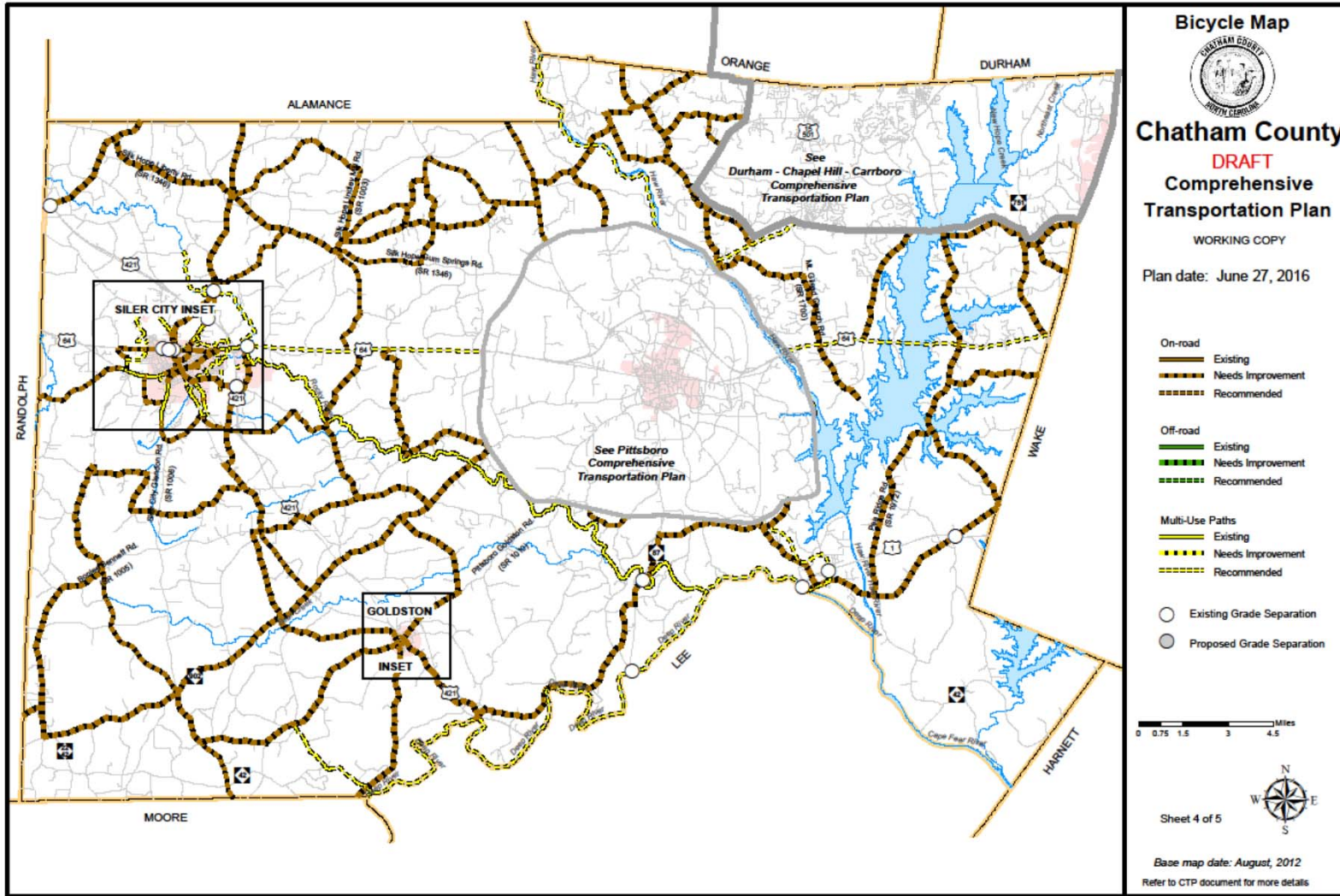
Transportation

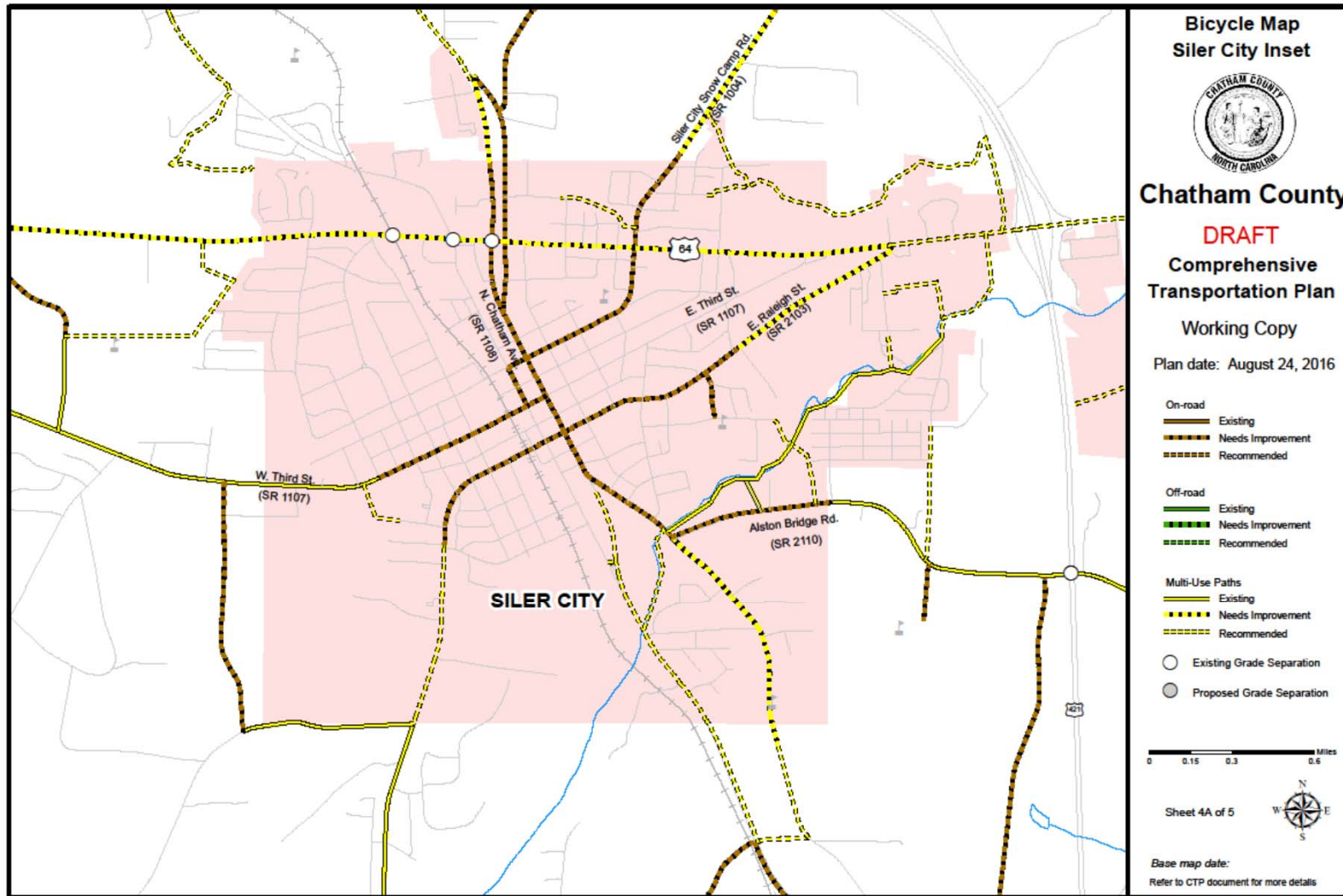




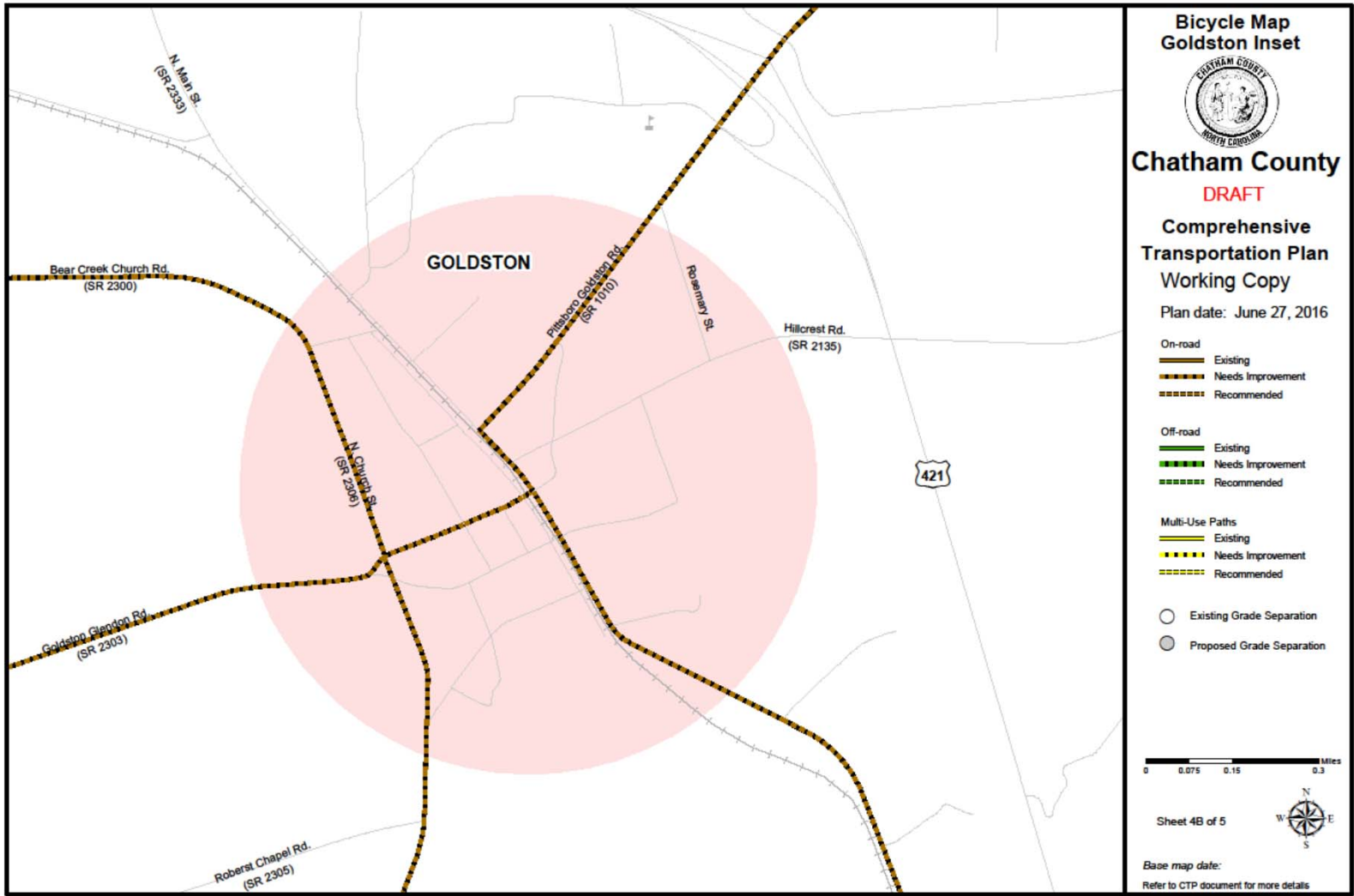


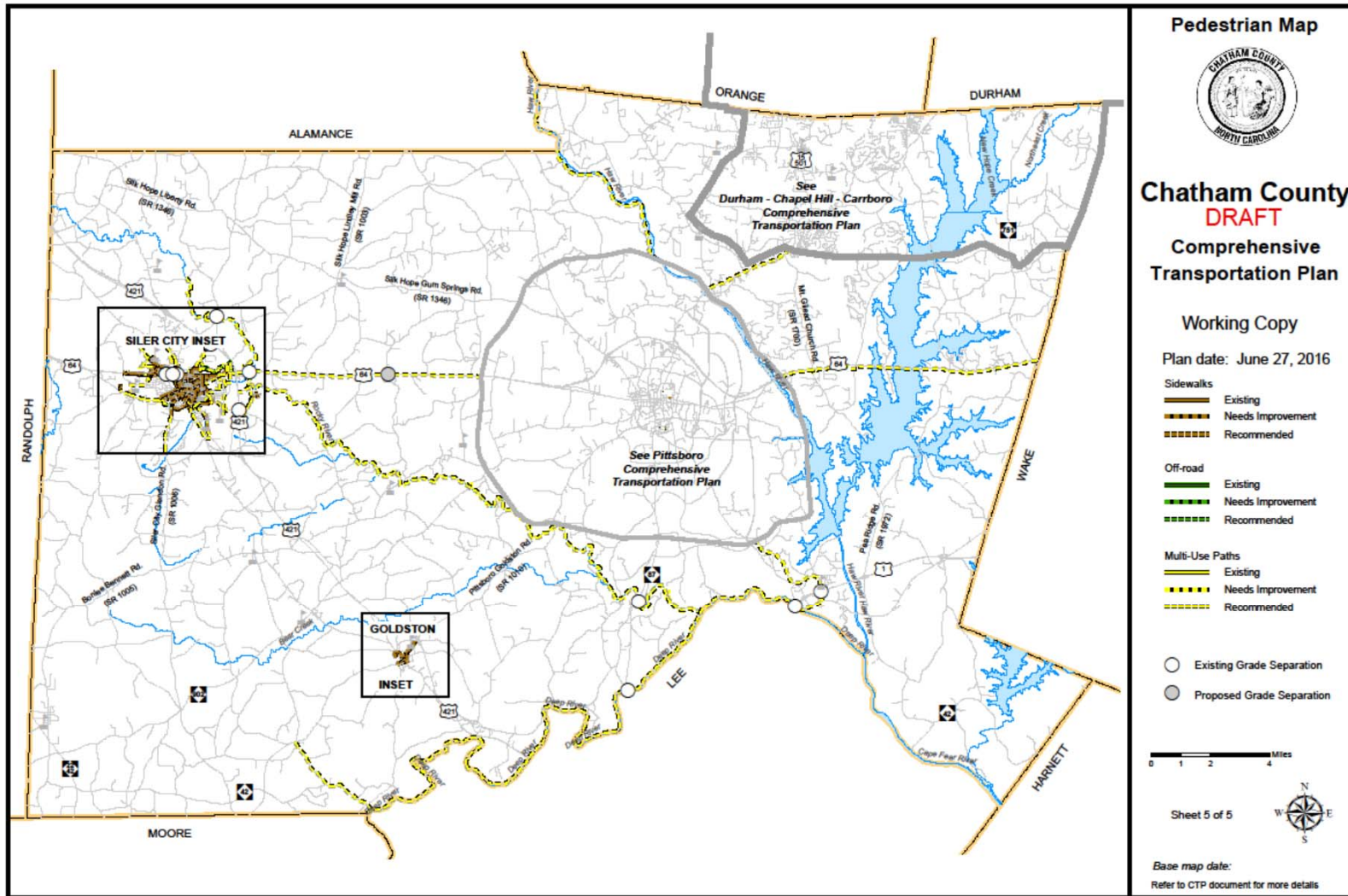


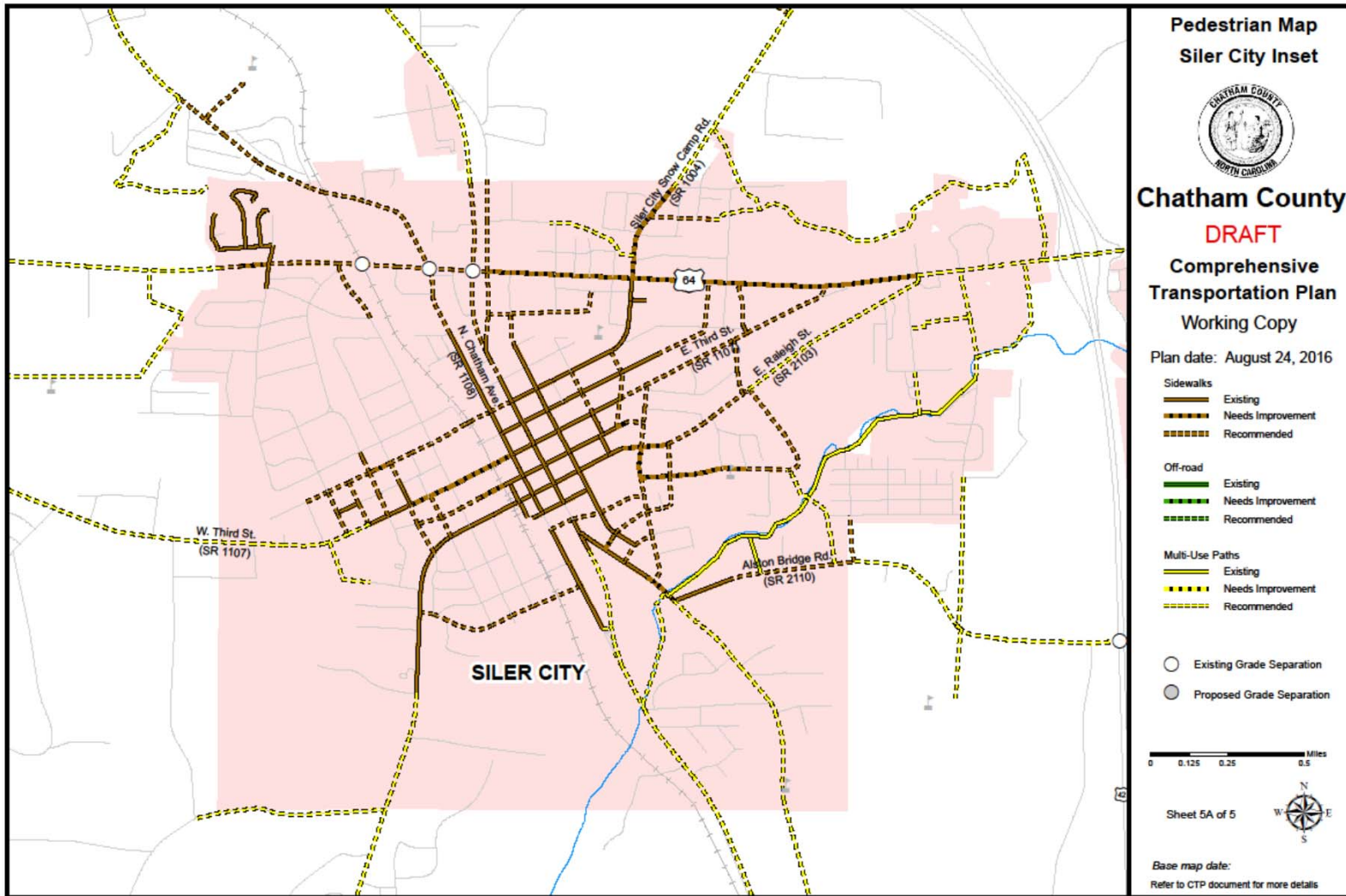


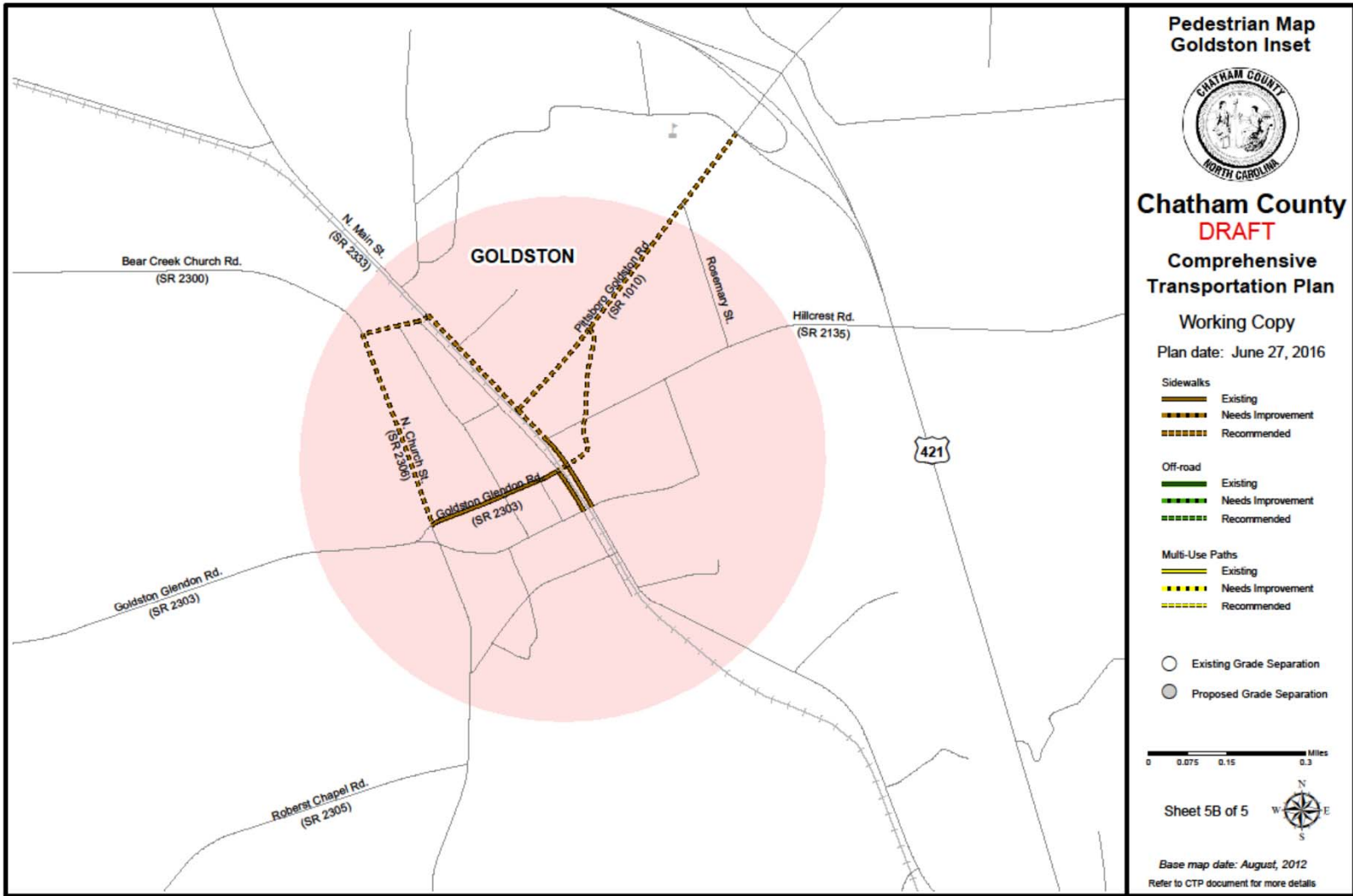












## *Next Steps*

9/19 – Chatham County Commissioners

9/19 – Siler City Commissioners

10/3 – Goldston Town Board

10/13 – Triangle Area Rural Planning Organization

Nov/Dec – NCDOT Board of Transportation Adoption

Report will be published in early 2017



## *Questions / Comments*



Scott Walston, PE  
919 707 0941  
[swalston@ncdot.gov](mailto:swalston@ncdot.gov)

