

FY 2017  
STATE OF THE COUNTY

Big Plans for a Big Future



# HIGHLIGHTS OF THE REPORT

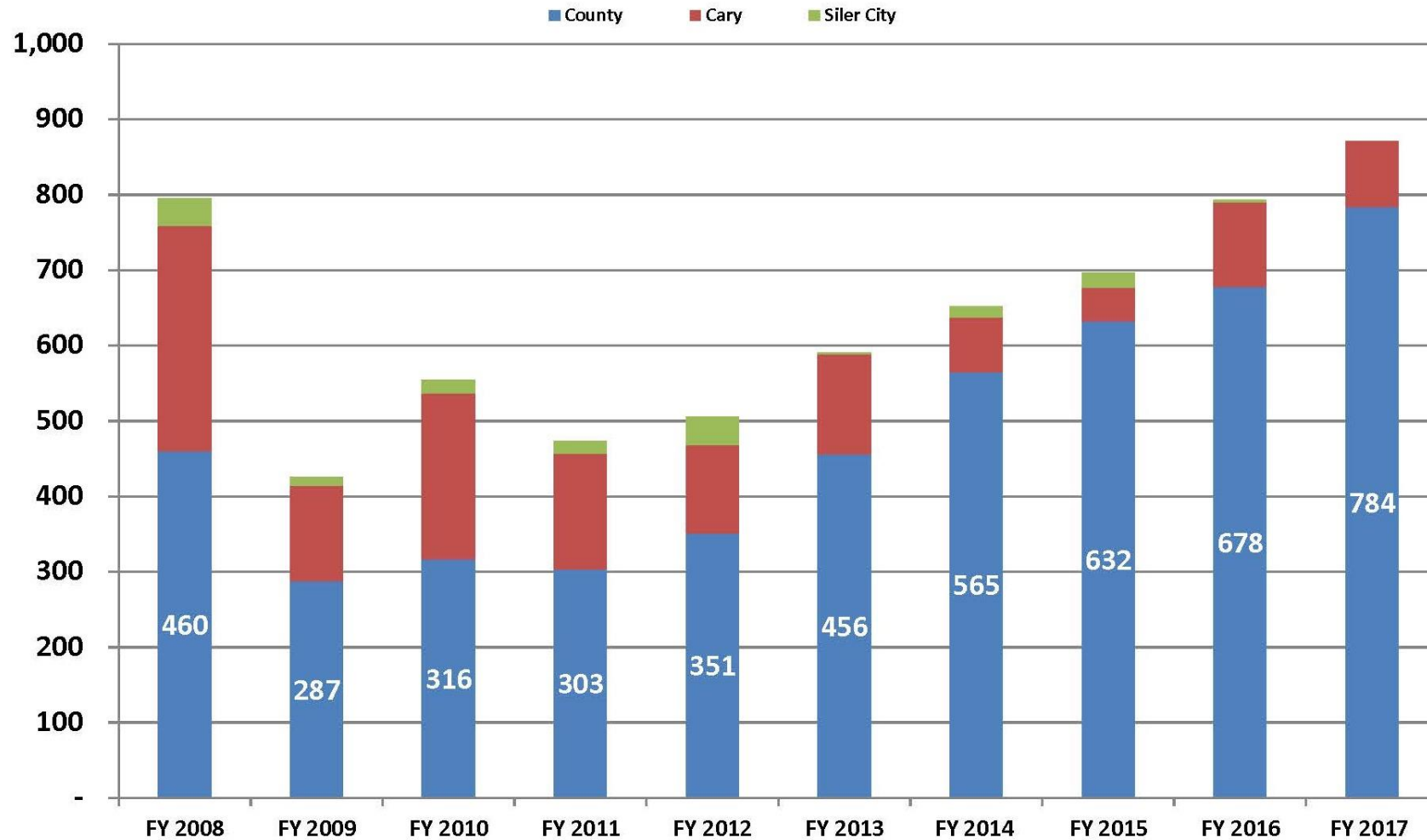
- ▶ We will hit on a few highlights of the State of the County Report today
- ▶ The full report is available as handout that is posted on the county's homepage at [www.chathamnc.org](http://www.chathamnc.org)

# A YEAR OF PLANNING

- ▶ Much of the FY 2017 addressed the unprecedented growth coming to Chatham County
  - ▶ Chatham Park, Briar Chapel and other developments are bringing new residents and businesses
  - ▶ Two megasites for industries are even better poised to attract manufacturing plant
- 

## Residential Building Permits Issued: Including Cary & Siler City

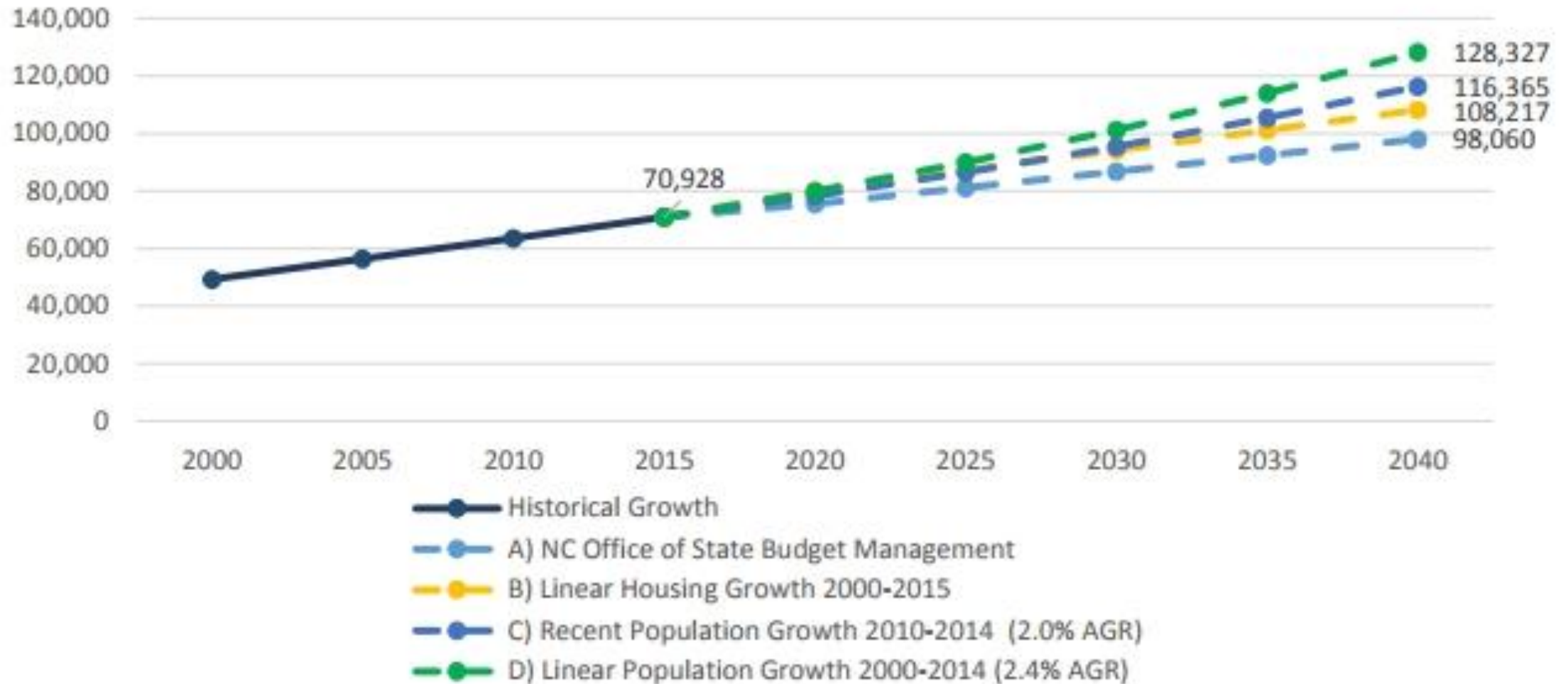
Source: Chatham County Central Permitting



PERMITS:  
FY 2017 was  
above the  
peak we  
had before  
the big  
recession

# POPULATION:

The potential to nearly double population by 2040




# COMPREHENSIVE PLAN

- ▶ The planning process involved extensive community meetings, surveys, stakeholder groups and county & town departments.
- ▶ More than 1,900 people responded to general surveys and 132 responded to an Agricultural Focus Group survey.
- ▶ The plan incorporated related policies and plans already in place for the county, towns and schools

# GOALS & BIG IDEAS

- ▶ The final draft of the Comprehensive Plan identified **10 goals** covering several major focus areas.
- ▶ Several **BIG IDEAS** also have been identified as part of the plan
- ▶ The county received special recognition from Triangle J Council of Governments for incorporating public health planning in the plan
- ▶ Entire plan is found at:  
[www.chathamnc.org/comprehensiveplan](http://www.chathamnc.org/comprehensiveplan)

# COMP PLAN NEXT STEPS


- ▶ This plan will be finalized & adopted this fall
  - ▶ Implementation begins with incorporating the plan into Board of Commissioners goals in January 2018
  - ▶ Departments & offices also will be asked to address the Comp Plan's goals and big ideas
- 



# EDUCATION FACILITIES

- ▶ **New High School:** A site on Seaforth Road was chosen this year. The school will open FY2021. The core capacity expanded to 1,400 students due to new student population projections.
- ▶ **New Elementary School:** A site near Pollard Middle School has been selected. The school should open in FY 2020.
- ▶ **Central Services Building:** The county added funding to the CIP for this new administration facility, slated to open in FY2022.
- ▶ **CCCC Health Sciences:** This facility will get underway in FY2019. It will house a variety of health-related programs. It also may include an early voting location and branch library.

# SCHOOL PERSONNEL

- ▶ BOC increased funding to add 2 reading teachers, 3.5 coaching positions, and 3 teachers needed due to growth in enrollment
  - ▶ BOC also increased by 9% the supplemental salary funding for teachers to help us compete with surrounding school systems
- 

# ECONOMIC DEVELOPMENT MEGASITES

- ▶ Grants from Golden LEAF Foundation's Major Site Development Initiative provided key funding for the megasites:
  - \$4 million to Siler City to extend water service to CAM site
  - \$4 million to the City of Sanford to help extend wastewater to the Moncure site.
  - Chatham Board of Commissioners also approved 5-year option to buy, as required by Golden LEAF
  - All of these steps will greatly enhance the marketability of the megasites

# OTHER ECONOMIC DEVELOPMENT NEWS

The Chatham Economic Development Corporation reports:

- ▶ More than 200 jobs were added
- ▶ \$20.7 million in business investments
- ▶ Chatham Park and Briar Chapel both added retail and office space this past year
- ▶ Mountaire Farms is making major progress with its new state-of-the-art poultry processing plant in Siler City

# AGRICULTURE & CONFERENCE CENTER

- ▶ Grand Opening on March 25, 2017
- ▶ Largest flexible event space in the county
- ▶ New website has all the information you need:

[www.ChathamMeetings.com](http://www.ChathamMeetings.com)



# THE AMAZING DAWN STUMPF

- ▶ An illness led Dawn Stumpf to retire after 16 years as Elections Director.
- ▶ During her tenure, Dawn was well known for extraordinary service with a smile.
- ▶ This led County Manager Renee Paschal to name a new County Customer Service Award in Dawn's honor. The award recognizes individuals and departments demonstrating great customer service.
- ▶ In February 2017, the NC Board of Elections approved Pandora Paschal as the new elections director

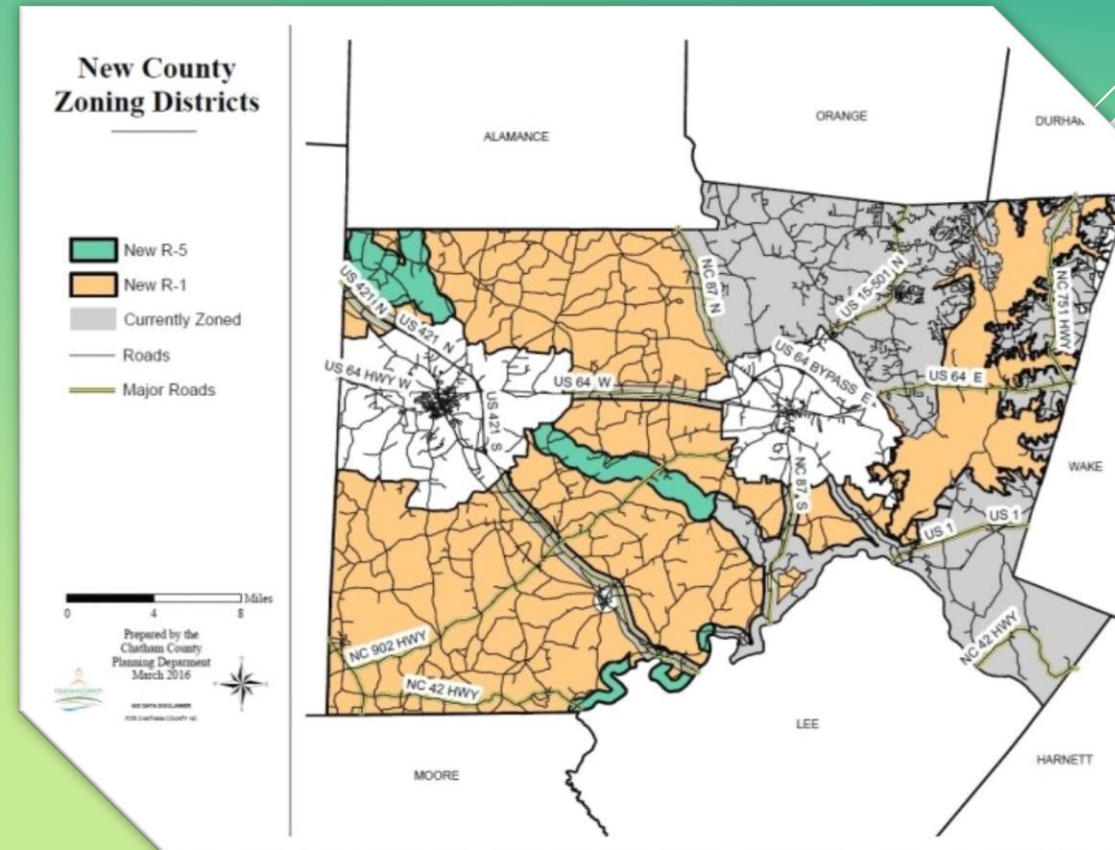


# ENHANCED ONLINE ACCESS

- ▶ **NEW GIS PORTAL:** On Dec. 1, 2016, the new GIS web access premiered with new applications, including the ability to download GIS data for your own use.
- ▶ **PUBLIC WEBSITE:** A totally new county website launched last November with a new look and enhanced features.
  - Both of these are more compatible with mobile devices and different types of browsers.
- ▶ **PERMITS & INSPECTIONS:** Upgraded software now allows all offices involved with permits & inspections to log in reports from the field, which provides more time for inspections. It soon will allow the public to access status reports of their permit applications & inspections.

# COUNTYWIDE ZONING

- ▶ In August 2016, the Board of Commissioners voted to apply areas of the county not already zoned.
- ▶ The covered 388 square miles and 11,800 parcels.
- ▶ Planning Dept. staff spent much of FY2017 implementing the new zoning.





# DOMESTIC VIOLENCE VICTIMS

- ▶ Chatham County added several positions to help victims of domestic violence.
- ▶ Two new bilingual advocates work with a new office, Family Violence Prevention Services. They provide an array of advocacy services.
- ▶ Two new victim services coordinators in the Sheriff's Office offer support and assistance with court-related issues.

# YOUNG COURT OFFENDERS

- ▶ Chatham 360 worked with the Sheriff's Office and police departments in Siler City and Pittsboro to implement a new program for first-time teen offenders.
- ▶ If the teens successfully complete a specified program, they can avoid an adult criminal record and rearrest.

# MIXED USE RECYCLING

- ▶ An easier way for residents to recycle took effect in January 2017.
- ▶ They no longer have to sort many recyclable items before depositing them at the collection centers.
- ▶ The transition took many months of preparation.
- ▶ Already it has reduced county vehicle mileage and has increased the recycling rate



# SHERIFF'S OFFICE OUTREACH

- ▶ Sheriff Roberson has initiated several exciting new initiatives to build community relationships:
  - Community Appreciation Nights – with games, food, music and fun
  - Sheriff's Training Academy for Residents – Interactive program over seven weeks.
  - Mobile Meetups, Coffee with a Deputy and others are in the full report



# AFFORDABLE HOUSING

- ▶ This has been a top priority of the Commissioners
- ▶ An Affordable Housing Task Force focused on affordable rentals, with staff support from the Triangle J Council of Governments
- ▶ They produced a report and toolbox for the county and the towns to help us increase affordable rental options.
- ▶ This effort is transitioning to a permanent advisory committee

# MORE TOWN COLLABORATIONS

- ▶ **Future Pittsboro Town Hall:** The Board of Commissioners set aside \$450,000 to help Pittsboro buy land for a new town hall in downtown. The county is considering renting space in facility. If not, the town would refund the money.
- ▶ **Utilities Master Plan:** The county will work with all the towns in developing a new utilities master plan.



**CHATHAM**  
**HEALTH ALLIANCE**  
BUILDING COMMUNITY THROUGH COLLABORATION

- ▶ Chatham Health Alliance is a successful community collaboration focused on the county's top three health priorities: access to health care, access to mental health services, and obesity prevention.
- ▶ In FY 2017, the Alliance received the Health Transformation Award for its excellent work related to Exercise is Medicine.
- ▶ They have a new website:  
[www.chathamhealthalliance.org](http://www.chathamhealthalliance.org)

# HOME REPAIRS FOR SENIORS & DISABLED

- ▶ The Council on Aging has partnered with Rebuilding Together and other agencies to make needed home repairs
- ▶ A shared online database developed by a UNC-CH intern has increased efficiency and reduced duplication of effort.
- ▶ They received a 2017 Local Government Credit Union Excellence in Innovation Award.
- ▶ The project led the Town of Siler City to approve waiving fees for building ramps for the disabled.






# MAJOR RECREATIONAL GRANTS

- ▶ Briar Chapel Park: Parks & Recreation received notice of a \$150,000 PARTF grant to make improvements, including adding a playground, picnic shelter, walking trails, sidewalks and fencing.
- ▶ Haw River Trail: The NC Recreational Trail Program provided \$100,000 to build a pedestrian bridge over a creek and two miles of natural surface trails on either side.

# IN SUMMARY

- ▶ The past fiscal year reflects an effort to create the future we want for Chatham County.
  - ▶ Many new partnerships and collaborations were forged and many yet to come.
- 

# PLEASE SEE THE FULL REPORT FOR MORE

- ▶ The full 2017 State of the County includes many more highlights from departments, awards, honors, and achievements.