

<b>Holmes Building Systems, LLC</b>		<b>Order Confirmation</b>	Revision Date: <b>7/27/16</b>	
<b>HBS Elite Series-11/26/2014</b>	<b>Model #</b>	<b>N 30'x76' HBS Elite R</b>	<b>Model Name</b>	<b>New Plan</b>
<b>Ranch House</b>	<b>Square Feet</b>	<b>2280</b>	<b>Perimeter Feet</b>	<b>212</b>
<b>OFF FRAME</b>	<b>Box Size 30' x 76'</b>	<b>7/27/16 12:00 AM</b>	<b>Sales Person:</b>	<b>NL/AW</b>
Retailer: <b>North Carolina Custom Modulares, LLC</b>	Transport By <b>Starfleet</b>		Site Delivery	
Address: <b>Asheboro</b>	MOD LABEL(S): <b>NC Modular Label</b>		<b>N/A</b>	
Phone #: <b>336-810-5150</b>	Financed By: <b>21st Mortgage</b>		PO#	
Customer Name or Stock: <b>County Home</b>	Serial Number: <b>HBSNC</b>			

<b>DÉCOR INFORMATION</b>					
	<b>Corner Post Color</b>	<b>STD White Square Corner Post</b>		<b>Exterior Vinyl Siding Color</b>	
<b>Primer Color:</b>	<b>Extra White Primer Wa</b>	<b>Carpet Color</b>	<b>STD 25 oz New Day Carpet</b>		<b>D-5 Parkside Vinyl Siding</b>
<b>KITCHEN</b>	<b>STD Laminate Counter/Backsplash/Self Edge Colors</b>		<b>Opt. Ceramic Backsplash/Bull Nose Color</b>		<b>Shingle Color</b>
Counter Top	Laminate Kitchen Countertop, STD				<b>STD SHINGLE COLOR</b>
Self Edge	Laminate Self Edge (SQ Edge) - Kitchen STD				<b>Shutter Color</b>
Backsplash	Laminate Backsplash				<b>15" Shutters STD</b>
<b>MASTER BATH</b>	<b>STD Laminate Counter/Backsplash/Self Edge Colors</b>		<b>Opt. Ceramic Backsplash/Bull Nose Color</b>		<b>Cabinet Color</b>
Counter Top	Laminate Master Bath Countertop				<b>STD Cabinets (Choose Color)</b>
Self Edge	Laminate Self Edge (SQ Edge) - M/Bath STD				<b>Floor Lino/Laminate/Ceramic Color</b>
Backsplash	Laminate Backsplash				<b>Kitchen</b>
					<b>INSERT COLOR</b>
<b>GUEST BATH</b>	<b>STD Laminate Counter/Backsplash/Self Edge Colors</b>		<b>Opt. Ceramic Backsplash/Bull Nose Color</b>		<b>Utility</b>
Counter Top	Laminate Guest Bath Countertop, STD				<b>M Bath</b>
Self Edge	Laminate Self Edge (Square Edge) - Guest Bath STD				<b>INSERT COLOR</b>
Backsplash	Laminate Backsplash				<b>G Bath</b>
					<b>INSERT COLOR</b>
<b>GUEST BATH</b>	<b>STD Laminate Counter/Backsplash/Self Edge Colors</b>		<b>Opt. Ceramic Backsplash/Bull Nose Color</b>		<b>DR</b>
Counter Top					<b>INSERT COLOR</b>
Self Edge					
Backsplash					

<b>PRODUCTION INFORMATION</b>			<b>Carrier Asset # 1815-</b>	
OPT. #	QTY.	DESCRIPTION	VERIFIED BY	Locations/Notes
		<b>THERMAL</b>	<b>Verified By</b>	
		Thermal Zone III R- ( 0 - 19 - 0 )		
	<b>2280</b>			
STD	<b>212</b>	<b>R-19 Sidewall Insulation. w/2 in x 6 in Sidewalls, STD</b>		
	<b>2280</b>			
	<b>2280</b>	<b>R-30 Floor Insulation, Per SF</b>		
	<b>2280</b>	<b>Add R-45 blown ceiling insulation, Per SF</b>		
OPT. #	QTY.	WIND_ZONE	Verified By	Locations/Notes
STD	<b>1</b>	<b>Wind Speed 100 MPH. STD</b>		
		<b>N/A</b>		
OPT. #	QTY.	FIREPLACES	Verified By	Locations/Notes
STD	<b>1</b>	<b>No Fireplace Ordered</b>		
OPT. #	QTY.	FLOORS	Verified By	Locations/Notes
STD	<b>1</b>	<b>OFF FRAME</b>		

Builder /Representative(Initials) \_\_\_\_\_ (Customer Initials) \_\_\_\_\_ Date \_\_\_\_\_

I (we) agree and accept that the colors and specifications indicated are correct for the construction of my (our) home.

Order Confirmation		Page 2 of 5	Model Number	N 30'x76' HBS Elite R	Serial #	HBSNC		
HBS Elite Series-11/26/2014			Customer Name:		County Home			
OPT. #	QTY.	FLOOR COVERING	VERIFIED BY		Locations/Notes			
STD	1	STD 25 oz New Day Carpet. Tack Strip,6 lb Re-Bond Carpet Pad (Shipped Loose), Per Plan STD						
STD	1	Elements Floor Tile In Brickwork Pattern in STD locations			NOTE: All Carpet Is Shipped Loose Unless Otherwise Noted			
OPT. #	QTY.	PLUMBING	Verified By		Locations/Notes			
STD	1	Deep Double Bowl Stainless Steel Kit. Sink w/Brushed Nickel Dual Control Faucet & Spray,STD			Central Water Shut Off in UT Per Prt. STD			
STD	1	60" Fiberglass Tub/Shower in Guest Bath, STD						
STD	1	60" Fiberglass Tub/Shower (STD Per Plan)-Master Bath						
STD	1	50 Gallon Hot Water Heater w/Pan , STD						
STD	3	Elongated Toilets w/Shut Off Valves-STD						
STD	2	Frost free faucets						
STD	2	ADD Full Bathw/ 60" Tub/shower, Toilet, Sink w/Faucet, & Base Cabinet						
OPT. #	QTY.	WALLS	Verified By				Locations/Notes	
STD	1	8' (2x6) (16" OC) Exterior Walls w/R-19 Insulation, STD						
STD	1	(2" x 4") Interior Walls @ 24" OC, STD						
	1	Extra White Primer Wall Color required with no crown molding						
OPT. #	QTY.	ELECTRICAL AND LIGHTING	Verified By		Locations/Notes			
STD	1	Brushed Nickel Chandelier (3 Arm) STD In Dining Room			Arc Fault Breakers STD			
					Wireless Door Bell STD @ Frt Door			
STD	4	Can Lights in Kitchen (1ea. Over Kitchen Sink,3ea. In Ceiling Per Plan)						
STD	2	Wet Area Can Light in Master Bath (1ea. Over Tub)(1ea. Over Shower)Per Plan						
STD	1	Wet Area Can Light in Guest Bath (1ea. Over Tub/Shower)Per Plan						
STD	1	Wire & Brace for Ceiling Fans STD in all Bedrooms						

Builder /Representative(Initials)

(Customer Initials)

Date

I (we) agree and accept that the colors and specifications indicated are correct for the construction of my (our) home.

Order Confirmation		Page 3 of 5	Model Number	N 30'x76' HBS Elite R	Serial #	HBSNC
HBS Elite Series-11/26/2014			Customer Name:		County Home	
OPT. #	QTY.	ROOF/CEILING	VERIFIED BY		Locations/Notes	
STD	2280	Flat Ceilings Throughout w/Smooth Finish, STD			30' Wide Ranch Models 7/12 Roof Pitch	
STD	2280	30' Wide Ranch Models 7/12 Roof Pitch.STD w/Non Storage. (2 Box Home)				
STD	1	STD SHINGLE COLOR. ( 5 to Choose From)				
	1	ROOF LOAD: 20 PSF				
	1	County Home will go to: Randolph				
OPT. #	QTY.	EXTERIOR	Verified By		Locations/Notes	
STD	212	D-5 Parkside Vinyl Siding, STD			Dormer Carrier Asset #	
STD	1	STD White Square Corner Post.			1815-	
STD	1	No Dormers Ordered				
OPT. #	QTY.	EXTERIOR WINDOWS	Verified By		Locations/Notes	
STD	1	Single Hung "Low-E" Windows w/Grds & Screens, STD				
STD	1	15" Shutters STD. Front Door Side				
OPT. #	QTY.	EXTERIOR DOORS	Verified By		Locations/Notes	
STD	1	36" Fanlight Frt Door w/No Storm STD w/Brushed Nickel Knob Lockset				
STD	1	NO SIDELITE(S) ORDERED @ Front Door				
STD	1	NO TRANSOM OVER FRONT DOOR				
STD	1	36" 9 Lite Rear /End Exterior Door,No Storm w/Brushed Nickel Knob Lockset STD.				

Builder /Representative(Initials) \_\_\_\_\_ (Customer Initials) \_\_\_\_\_ Date \_\_\_\_\_

I (we) agree and accept that the colors and specifications indicated are correct for the construction of my (our) home.

Order Confirmation		Page 4 of 5	Model Number	N 30'x76' HBS Elite R	Serial #	HBSNC
HBS Elite Series-11/26/2014			Customer Name:		County Home	
OPT. #	QTY.	CABINETS	Verified By		Locations/Notes	
STD	1	STD Cabinets (Choose Color).				
STD	1	30" Overhead Cabinets w/Crown Molding STD w/8' Sidewalls				
STD	1	Shelf Over W/D Area				
STD	1	36" High Lavatory w/Drawer Bank-Master Bath,std Per Plan				
STD	1	30" High Lavatory in Guest Bath, STD				
07-042 07-055	1	Upgrade Island Cabinet ILO std. Island, Ranch up to 6'1"x3'4"				
STD	1	Laminate Kitchen Countertop, STD.				
STD	1	Laminate Master Bath Countertop. STD.				
STD	4	Laminate Guest Bath Countertop, STD.				
STD	1	Laminate Backsplash. Kitchen-STD				
STD	1	Laminate Backsplash. M/Bath STD				
STD	4	Laminate Backsplash. G/Bath STD				
STD	1	Laminate Self Edge (SQ Edge) - Kitchen STD.				
STD	1	Laminate Self Edge (SQ Edge) - M/Bath STD.				
STD	4	Laminate Self Edge (Square Edge) - Guest Bath STD.				
OPT. #	QTY.	INTERIOR TRIM AND FINISH	VERIFIED BY		Locations/Notes	
STD	1	White Molding Package (6" Base Molding and 2 1/4" Window & Door Casing,NO Crown Molding) (Crown Molding is Optional)				
14-	1	6 Panel Interior Door w/Brushed Nickel Lever Handle & Hardware				
OPT. #	QTY.	APPLIANCES	Verified By		Locations/Notes	
STD	1	25 CF Black Side By Side Refrigerator w/Icemaker in Door				
STD	1	Freestanding 30" Black Electric Smooth-Top Range (Self Clean) -STD				
15-010-1	1	ADD Black Microwave/Hood Combo ILO Range Hood				
STD	1	Install Black Dishwasher-STD				

Builder /Representative (Initials) \_\_\_\_\_ (Customer Initials) \_\_\_\_\_ Date \_\_\_\_\_

I (we) agree and accept that the colors and specifications indicated are correct for the construction of my (our) home.

Order Confirmation		Page 5 of 5	Model Number	N 30'x76' HBS Elite R	Serial #	HBSNC
HBS Elite Series-11/26/2014			Customer Name:		County Home	
OPT. #	QTY.	CHASSIS/CARRIERS	Verified By		Locations/Notes	
2570	2	Modular Home Carrier(ea.)				
2570		Parts/Dormer Carrier (ea.)				
5320	1	Engineering Fee				
2481-1	1	Third Party Exterior Set (Turn Worksheet & Locator In w/Order)				
2481-2	1	Third Party Interior Trim (Turn Worksheet & Locator In w/Order)				
2481-2		Third Party Install Carpet (Per House)				
3000		NC Modular Label				
		N/A				
2561	2	NC State Association Fees				
2563	1	NATIONAL ASSOCIATION FEES				

**Additional Remarks:**

**Ship Date:** Saturday, January 00, 1900

I (we) agree and accept the colors and specifications indicated on pages 1- 4 are correct for the construction of my (our) home. Please Initial Pages 1-3 and place signature(s) on page 4.

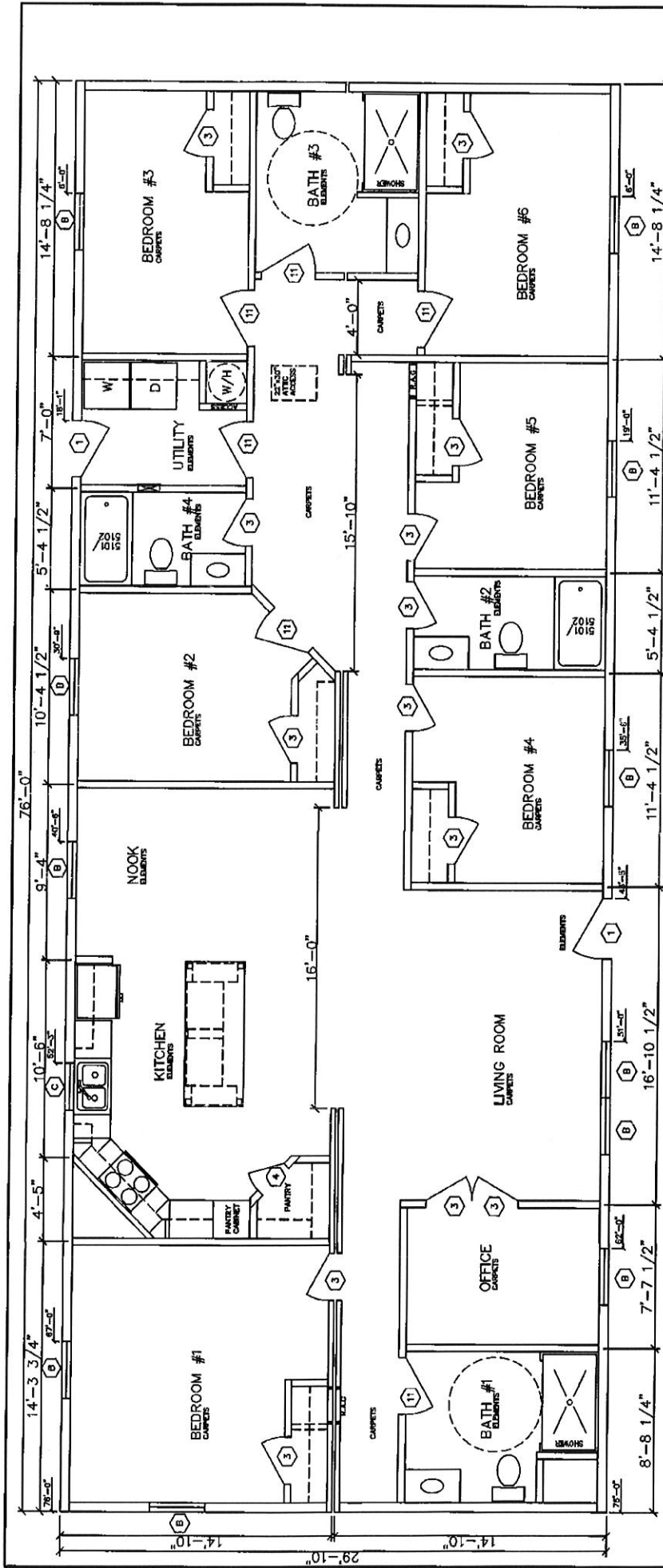
\_\_\_\_\_  
Customer Acceptance & Date

\_\_\_\_\_  
Customer Acceptance & Date

\_\_\_\_\_  
Builder Acceptance & Date

Photographs and floor plans may contain options or other features not covered by the base price. HBS reserves the right to make changes to its standard or optional equipment list or to what is shown in visual representations of its models in advertising and sales materials. HBS may do so at any time and without prior notice. HBS also reserves the right to make such changes without incurring any obligations to equip or modify models manufactured prior to the effective date of such change. Please review the above information for accuracy. If errors are found notify the Manufacturing Facility of any corrections, additions, or deletions. If this Confirmation is correct sign and return to your Sales Rep or HBS. This price is effective for 30 days, after 30 days your sales order pricing sheet will need to be updated by your HBS Sales Rep.

All Prices and Specifications Are Subject To Change Without Notice  
**Effective Date 11-26-2014**



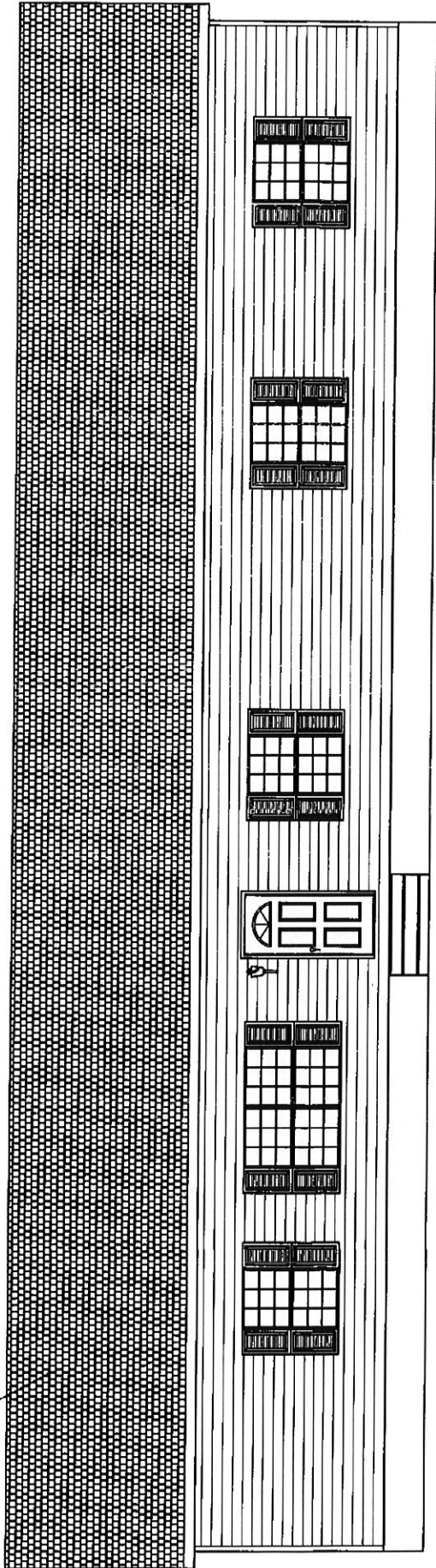
DOOR SCHEDULE	R.O.	WINDOW SCHEDULE (PER GLAZING SEE IT)	R.O.	AREA
1 36"x80" EXTERIOR	3/8"	A 30"x60"	30 1/4"x80 1/4"	1st FLOOR
2 32"x80" EXTERIOR	3/8"	B 36"x60" EGRESS	36 1/4"x80 1/4"	2267 SQ. FT.
3 30"x80" INTERIOR	3/8"	C 30"x36	30 1/4"x36 1/4"	1000 SQ. FT.
4 24"x80" INTERIOR	3/8"	D 30"x40"	30 1/4"x40 1/4"	SUPPORT
5 72"x80" SG GLASS DOOR	7/8"	E 42"x34" BLOCK SAFETY GLAZED	42 1/4"x34 1/4"	A 2-bay
6 48"x80" BIFOLD	3/8"	F 30"x15" ROUND	30 1/4"x15 1/4"	B 3-bay
7 60"x80" BIFOLD	3/8"	G 30"x60" SAFETY GLAZED	30 1/4"x60 1/4"	C 4-bay
8 72"x80" ATRIUM DOOR	3/8"	H 46"x80" SAFETY GLAZED	46 1/4"x80 1/4"	
9 32"x80" EXTERIOR	3/8"	I 14"x68" SAFETY GLAZED	14 1/4"x68 1/4"	
10 20"x80" INTERIOR	3/8"	J 38"x60" EGRESS	38 1/4"x60 1/4"	
11 36"x80" INTERIOR	3/8"	K 36"x62" EGRESS	36 1/4"x62 1/4"	
12 60"x80" FRENCH DOOR	3/8"	L 30"x64" DORMER	30 1/4"x64 1/4"	
		M 36"x68" EGRESS	36 1/4"x68 1/4"	
		N 36"x66" EGRESS	36 1/4"x66 1/4"	
		O 36"x36"	36 1/4"x36 1/4"	

NOTES:  
 1. SEE ENERGY CALCULATIONS FOR ALLOWABLE WINDOW/DOOR OPTION COMBINATIONS.  
 2. SEE DESIGN CONFIGURATION FOR HEADERS IN THE DESIGN MANUAL.  
 3. SEE PAGE MM21 AND MM22 IN THE DESIGN MANUAL FOR PLUMBING FIXTURE SCHEDULE.

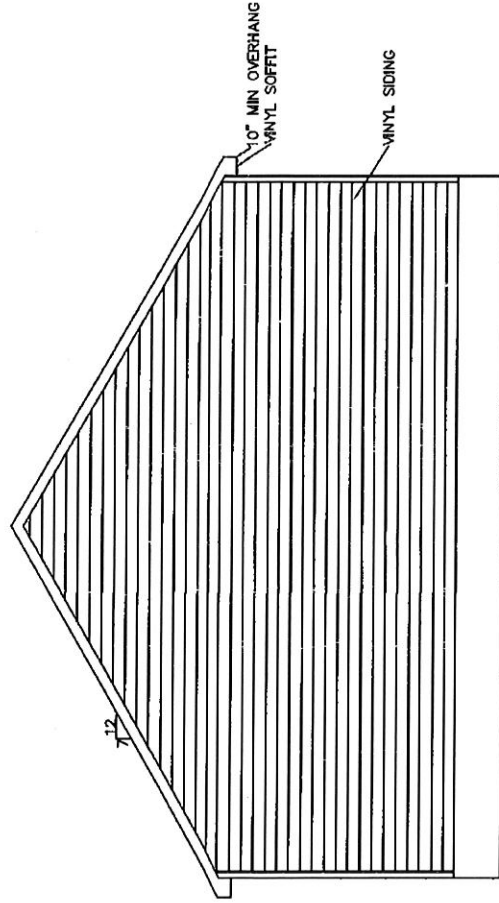
REVISIONS: SCALE: 3/16"=1'-0" APPROVED BY: STEVEN A.  
 DATE: 8/24/16 DRAWN BY: STEVEN A.  
 TITLE: FLOOR PLAN  
 MODEL: 30x76 NC CUSTOM HOOD-COUNTY PROJECT  
 PROJECT NO: 104-5.0

HOLMES BUILDING SYSTEMS, LLC

ASPHALT SHINGLES



FRONT ELEVATION



LEFT ELEVATION

REVISIONS:

SCALE: 3/16"=1'-0"

APPROVED BY:

DATE: 8/24/16

DRAWN BY: STEVEN A.

HOLMES BUILDING SYSTEMS, LLC

TITLE: ELEVATION

MODEL: 30x76 NC CUSTOM MOODS-COUNTY PROJECT

PROJECT NO:

DRAWING NO: AMP-13.0