

2016 STATE OF THE COUNTY



A FEW KEY POINTS

- ❖ The report covers July 1, 2015 to June 30, 2016, with a few minor exceptions
- ❖ A full copy of the report is provided as a handout and will be posted on the county website tomorrow.
- ❖ My comments will cover just some of the many highlights, so please review the full report.

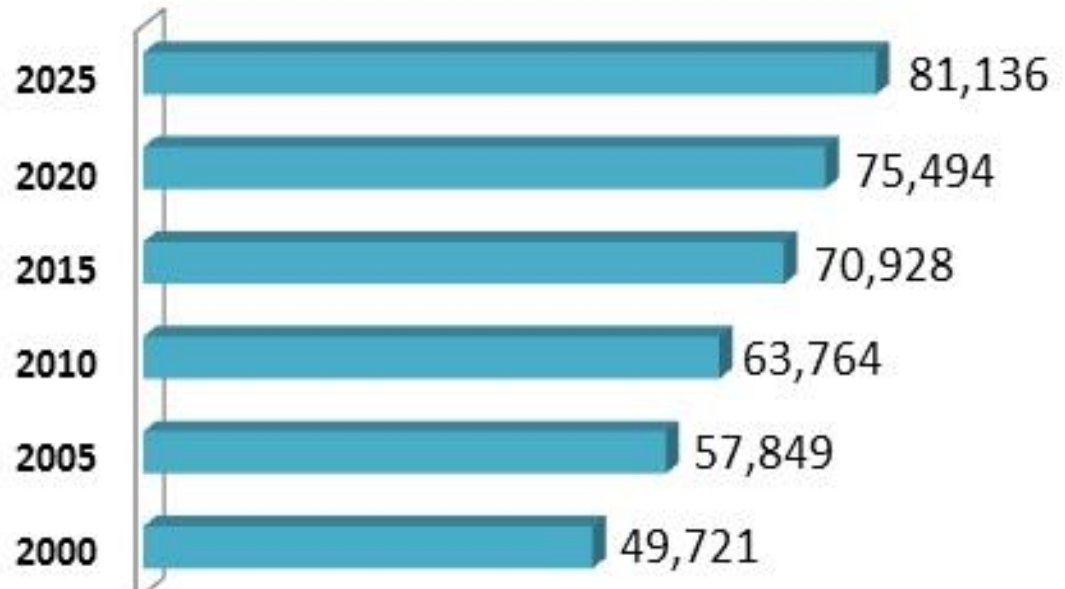
GROWTH: THE BIG THING

In 2015,
Chatham
County was
the **#1 fastest
growing** in NC

And, in the
top 35
nationwide

County Population 2000-2025

Projections from State Demographer



Estimate: Up 63.2% in 25-year span

PLANNING FOR THE FUTURE

- ❖ COMING! More residents, more jobs and more school students.
- ❖ This means we spent much of FY 2016 focused on planning.
- ❖ In other words, your county government has been very busy.

COMPREHENSIVE PLAN

- ❖ The BOC approved the development of a **Comprehensive Plan** to guide us for the next 25 years.
- ❖ A steering committee has worked with Planning Department staff and a professional consultant to involve many groups and residents.
- ❖ Thus far, more than 2,500 people have had input.



The draft plan should be completed in the next few months

OTHER PLANNING HIGHLIGHTS

- ❖ Last month, the Board of Commissioners approved **residential zoning** of all previously unzoned areas in the county. This is a key step in preparing for the coming population growth.
- ❖ A **new plan review officer** in Central Permitting has been a major boost for faster customer service and has helped cut county costs.

AFFORDABLE HOUSING

- ❖ This is a **priority issue** for the Board of Commissioners
- ❖ The County Manager's Office led the way and reported several achievements:
 - We partnered with the **Triangle Community Foundation** and **United Way** on a pilot grant that funded a collaboration of three nonprofits focused on affordable housing
 - The county is now funding rental deposits for low-income folk through the **Chatham Housing Authority**
 - Several other activities are listed in the report

ENVIRONMENTAL PROTECTION

- ❖ **Coal Ash:** The county is posting updated information on the disposal of coal ash in southeast Chatham, including results of county air quality tests. We also are posting updates on Duke Energy's future plans to remove coal ash from basins at the closed Cape Fear Plant.
- ❖ **Oil & Gas Moratorium:** The Board of Commissioners approved a 2-year moratorium on oil & gas development, including fracking. This gives the county time to develop a permitting process and update its regulations and ordinances

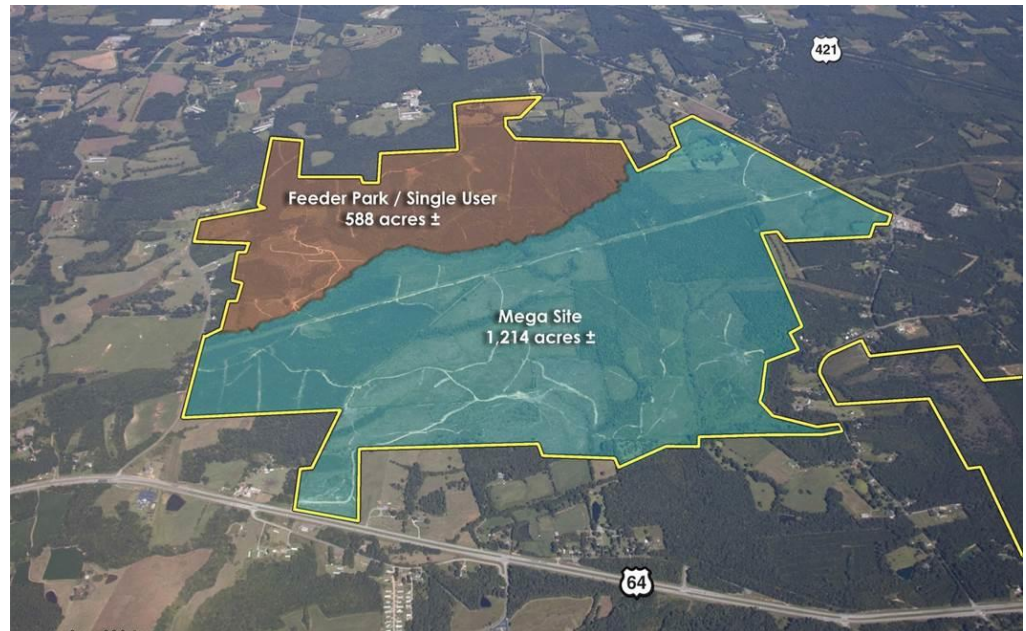
JOBS ARE COMING!

	FY 15	FY 16	CHANGE
New Jobs	141	990	Up 603%
Capital Investment	\$41.13MIL	\$89.57 MIL	Up 118%

- ❖ The big news from the Economic Development Corporation in FY was about **Mountaire Farms**. They are purchasing the former Townsend's poultry processing plant in Siler City. This will mean **700 jobs** and a **\$100 million** investment.
- ❖ Other major jobs news came from **Brookwood Farms, Olympic Steel, Boise Cascade and Pallet One**.

CAM MEGASITE

- ❖ The **Chatham-Siler City Advanced Manufacturing** site (1,800 acres) has been recertified by the state as development ready. It's the largest certified site in NC.
- ❖ The Board of Commissioners has approved an option to buy the site, BUT ONLY if a major manufacturer selects the site. This will make it easier for the state and county to promote the site.



RETAIL & COMMERCIAL

- ❖ **Chatham Park** opened a medical office building and a hospice center. A major retail and commercial center is coming to Russet Run. It will include a brewery and a unique senior living facility with its own performance theater.
- ❖ **Briar Chapel's Veranda** development opens this fall.
- ❖ See other projects in the full report.



MAJOR K-12 SCHOOL NEWS

- ❖ Student population growth is steadily increasing, so the county is preparing for construction of a new **high school** and **elementary school** in northeast Chatham.
- ❖ The new **Joint School Bus & County Garage** has opened. It is the only shared garage facility in the state.
- ❖ Science teacher **Eric Patin** and principal **Justin Bartholomew**, both received top statewide recognition this year.
- ❖ See the full report for details on these items.

LEADERSHIP TRANSITIONS

- ❖ **COUNTY MANAGER:** **Renee Paschal** was appointed county manager after **Charlie Horne** retired last October. He had been in this role for nearly 20 years.
- ❖ **SHERIFF:** **Richard Webster** announced his retirement this May after serving as Sheriff for 14 years. **Mike Roberson** was appointed by the Board of Commissioners to be the new sheriff.



ADMINISTRATIVE MILESTONES

- ❖ In August 2015, the **County's Leadership Academy** reached an important milestone of **200 graduates**. This program is fully taught by county employees and is designed to help graduates prepare for higher level duties.
- ❖ The county received notice that its **AAA bond rating** from Standard and Poor's had been reaffirmed. We remain the smallest county in NC to earn this highest rating.

The image shows the letters 'AAA' in a bold, red, 3D font. The letters are slightly offset from each other, creating a sense of depth. They are set against a plain white background.

PUBLIC HEALTH NEWS



- ❖ County Health Director **Layton Long** was selected by his peers to receive the Health Director of the Year Award.
- ❖ The great work of the **Health Alliance** will be supported by a new three-year **\$450,000 grant** from The Duke Endowment. The Alliance is a community partnership led by the Health Department. It focuses on the major health issues of Chatham residents.
- ❖ Animal Services led a huge effort to rescue **150+ neglected animals** on a local farm. This involved coordinating with several national and local groups.
- ❖ On March 1, 2016, all county facilities and grounds became **tobacco-free**.

FOSTER FAMILIES & KIDS

Helping foster families and kids was once again a major focus of Chatham County Social Services this past year.

- ❖ A new course is helping foster parents deal with the mental traumas that foster children have faced.
- ❖ The **Fostering Health Initiative** is a collaboration aimed at giving high-risk foster children access to comprehensive health care.



COUNCIL ON AGING

- ❖ The Council on Aging has been very successful securing grants and growing its volunteer team.
- ❖ In FY 16, volunteers gave **11,500+** hours of time.
- ❖ Several **renovations** at the two senior centers were completed , with the goal of making them safer or more suitable for seniors.
- ❖ Grants helped them launch the **SAY YES! Program**, which engages youth and churches in making home repairs for seniors.
- ❖ They also increased participation in the **Senior Games** by 34% in just one year.



EMERGENCY OPERATIONS

- ❖ 911 Communications met the national requirements for **Emergency Fire Dispatch**, which will help lower homeowners' insurance premiums. They expect to be fully certified this year.
- ❖ Emergency Operations has developed a database of **vulnerable residents** who might need special assistance during emergencies.
- ❖ The office is also designated as **StormReady** by the National Weather Service



SHERIFF'S OFFICE

- ❖ This has been a busy year in public outreach for the Sheriff's Office
- ❖ They have started a popular **Facebook** page and are using the **NextDoor** system to share information with neighborhood watch groups
- ❖ Major Charles Gardner has visited all high schools to tell students how to properly interact with law enforcement
- ❖ In all, officers provided **4,107 hours** of community service in FY 16.

AG & CONFERENCE CENTER

- ❖ The big news is major progress with the new **Agriculture & Conference Center**, which is nearing completion.
- ❖ We expect offices to move in late fall and conference facilities to open by early 2017.
- ❖ This will be the largest multi-purpose event center in the county with 10,000 square feet available.



OTHER FACILITIES

- ❖ **Briar Chapel Park** opened in September. It has softball fields, soccer field, multi-purpose field and a concession facility with restrooms. More facilities will be added when funds are available.
- ❖ **Wren Memorial Library** in Siler City has completed major renovations with generous funding from the Town of Siler City. Please visit and see how nice it looks.
- ❖ A new **Solid Waste & Recycling Main Office** includes waste scales placed much more conveniently for customers to drop off materials.

IN CLOSING

- ❖ More great things are in the works for FY 17
- ❖ Do take the time to look over the printed report and let people know that the full report is on the website.
- ❖ www.chathamnc.org