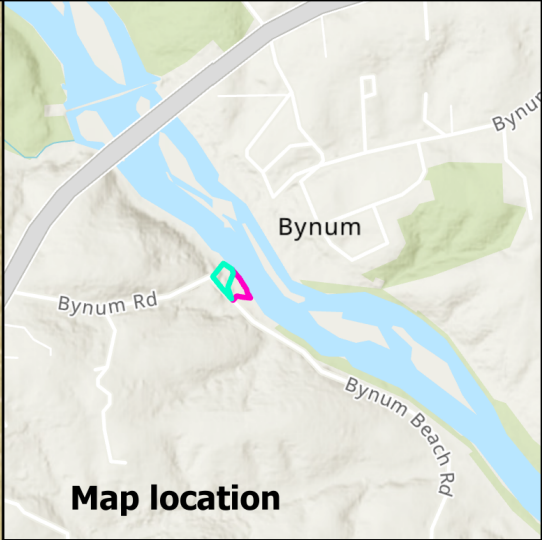


Current river access is highly eroded. Poor location due to bridge footings and river flow dynamics.



Map location

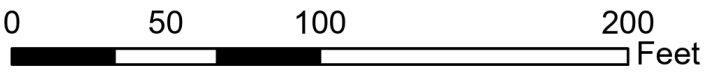
Staircase and Park Entrance

Approximately 325 linear feet of river bank

Approximately 500 ft to State Natural Area



Johnson Heirs Property Acquisition Map



- South Bynum River Access County Park
- Johnson Heirs Property (0.7 acres)

