

An aerial photograph of a river winding through a vast, dense forest. The river is the central focus, with its surface reflecting the sky and surrounding greenery. A bridge is visible in the middle distance, crossing the river. The forest is thick with various shades of green, indicating a healthy ecosystem. The overall scene is serene and natural.

Haw River Trail Feasibility Study

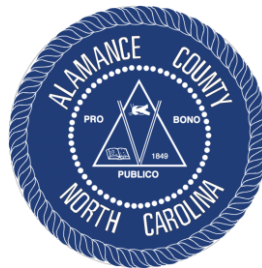
Chatham County Board of Commissioners
Plan Adoption Request

Project Background

- 2019 Chatham County Parks and Recreation Master Plan survey established the Haw River Trail as a priority recreational opportunity for Chatham residents.

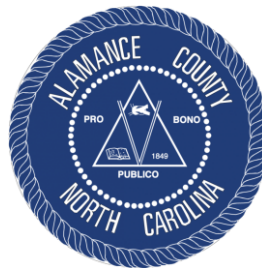
Project Background

- 2019 Chatham County Parks and Recreation Master Plan survey established the Haw River Trail as a priority recreational opportunity for Chatham residents.
- In 2022 TJCOG received an Economic Development Assistance grant on behalf of Chatham and Alamance Counties .



Project Background

- 2019 Chatham County Parks and Recreation Master Plan survey established the Haw River Trail as a priority recreational opportunity for Chatham residents
- In 2022 TJCOG received an Economic Development Assistance grant on behalf of Chatham and Alamance Counties
- EDA grant funded the Haw River Trail Feasibility Study for Chatham County.



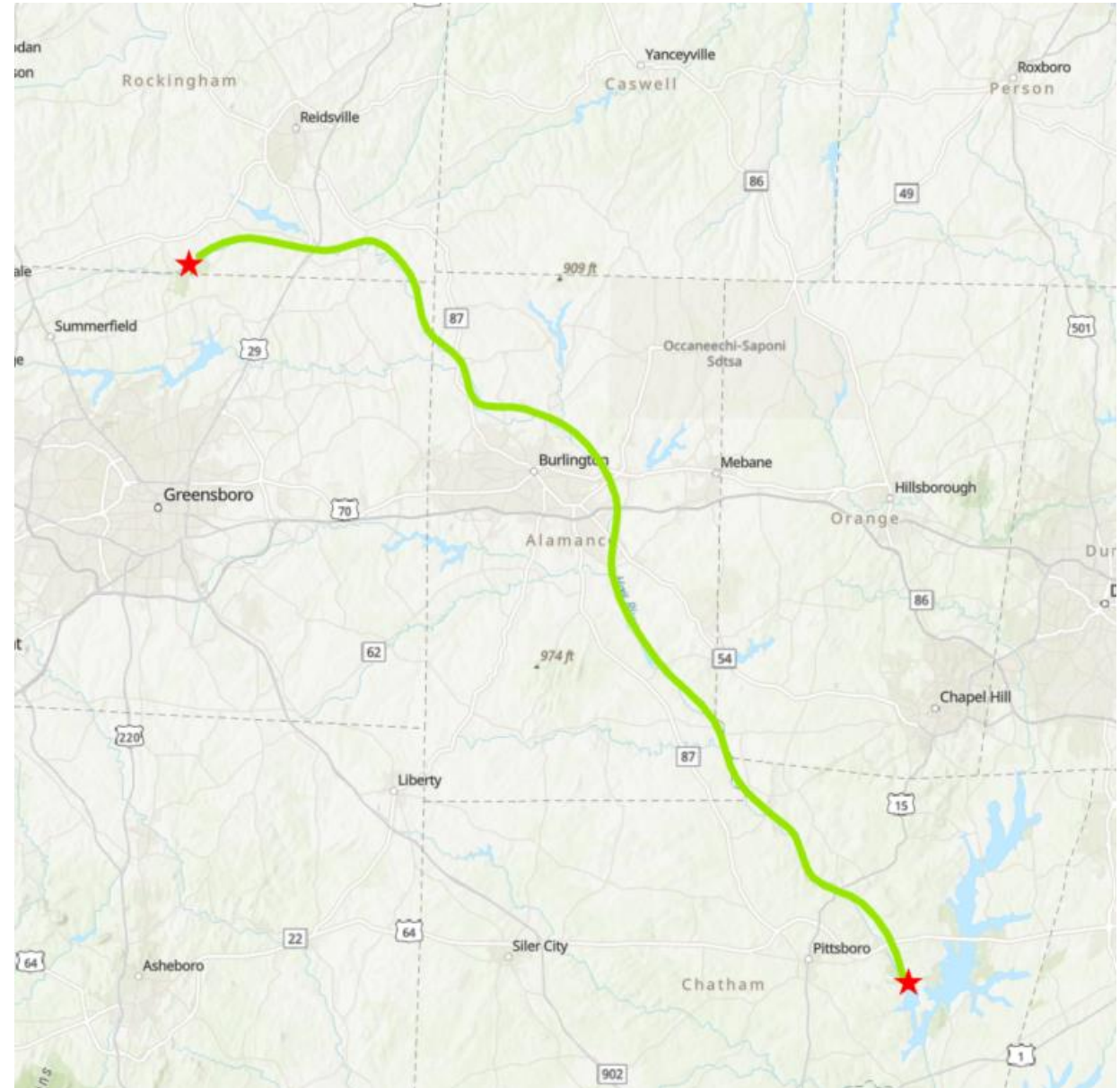
Project Background

- 2019 Chatham County Parks and Recreation Master Plan survey established the Haw River Trail as a priority recreational opportunity for Chatham residents.
- In 2022 TJCOG received an Economic Development Assistance grant on behalf of Chatham and Alamance Counties .
- EDA grant funded the Haw River Trail Feasibility Study for Chatham County.
- Alta Design + Planning Hired in October of 2022.



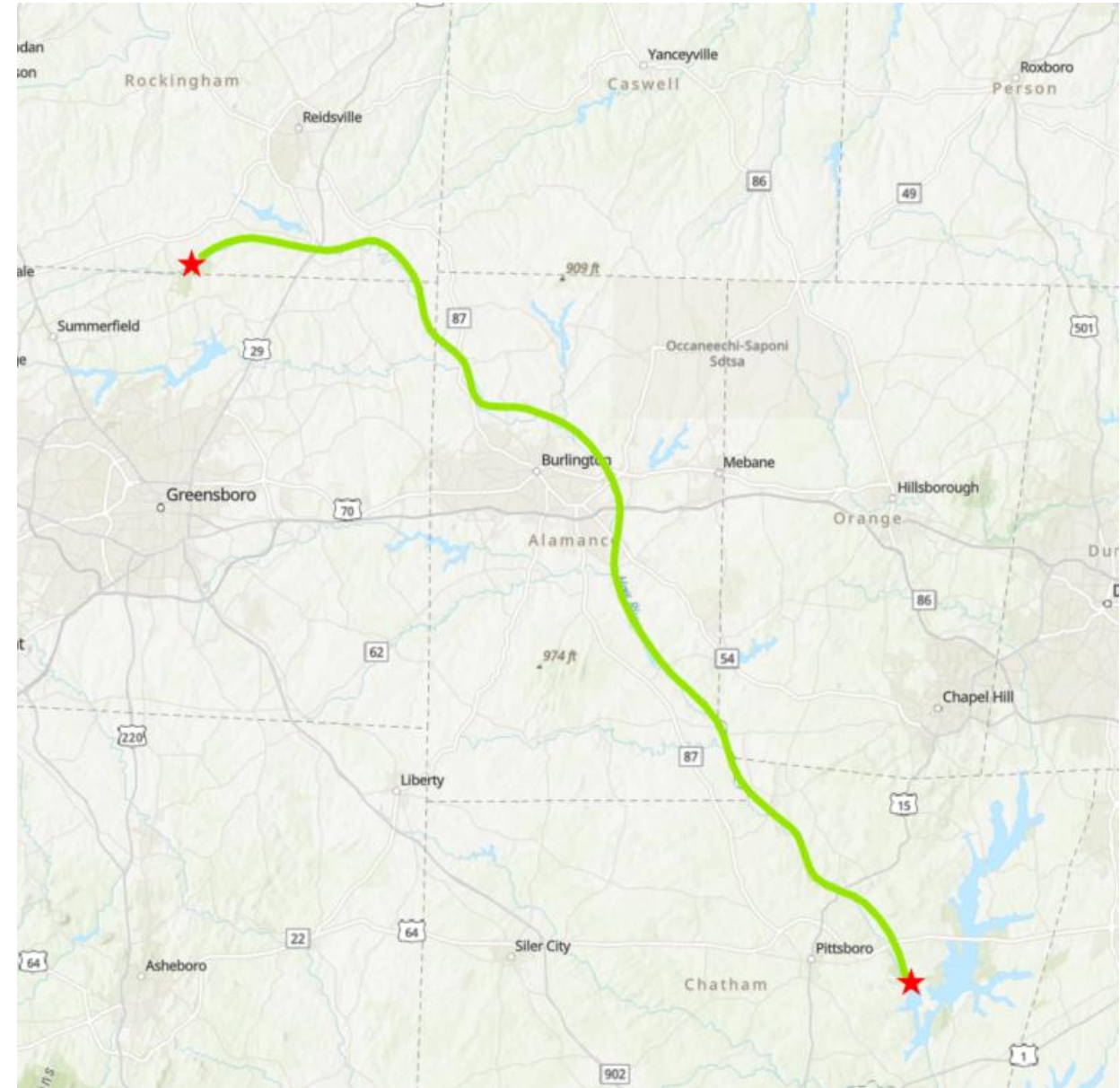
Project Context

- The Haw River Trail Concept
 - Hiking and Paddle Trail from Haw River State Park to Jordan Lake Recreation Area.



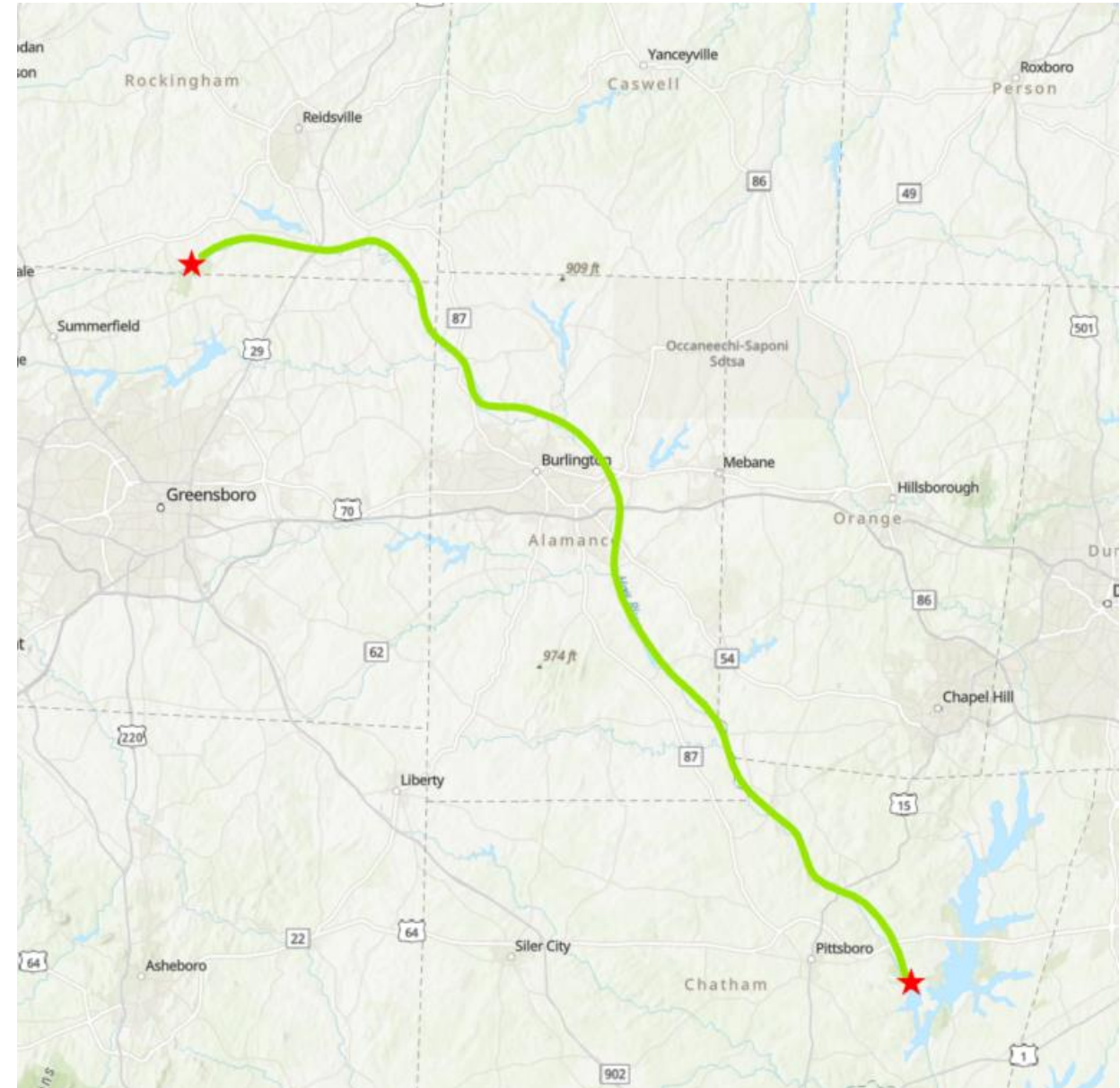
Project Context

- **The Haw River Trail Concept**
 - Hiking and Paddle Trail from Haw River State Park to Jordan Lake Recreation Area.
 - Passes through 5 NC Counties.



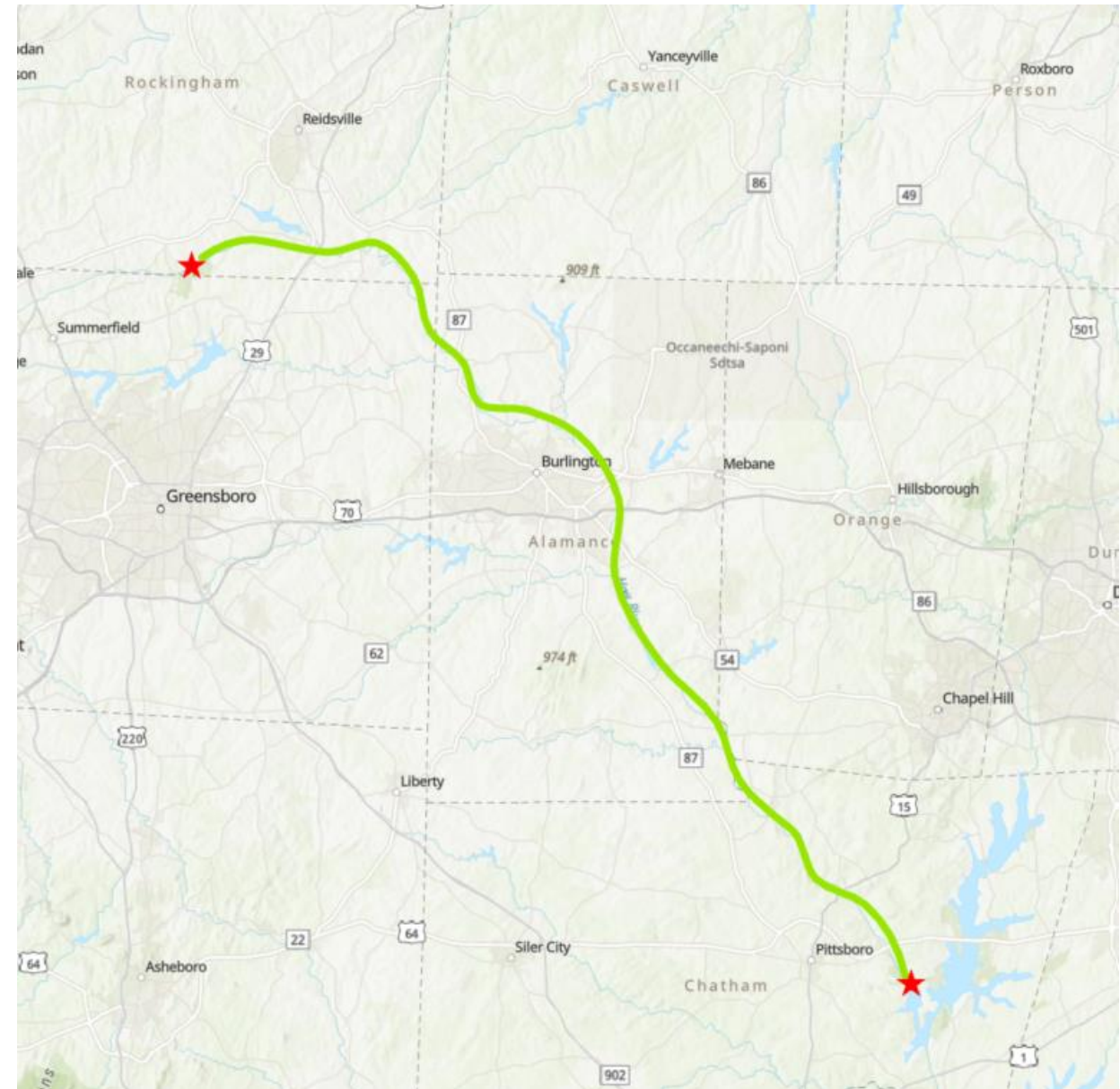
Project Context

- **The Haw River Trail Concept**
 - Hiking and Paddle Trail from Haw River State Park to Jordan Lake Recreation Area.
 - Passes through 5 NC Counties.
 - Authorized as an official state trail by NC Legislature in June of 2023.



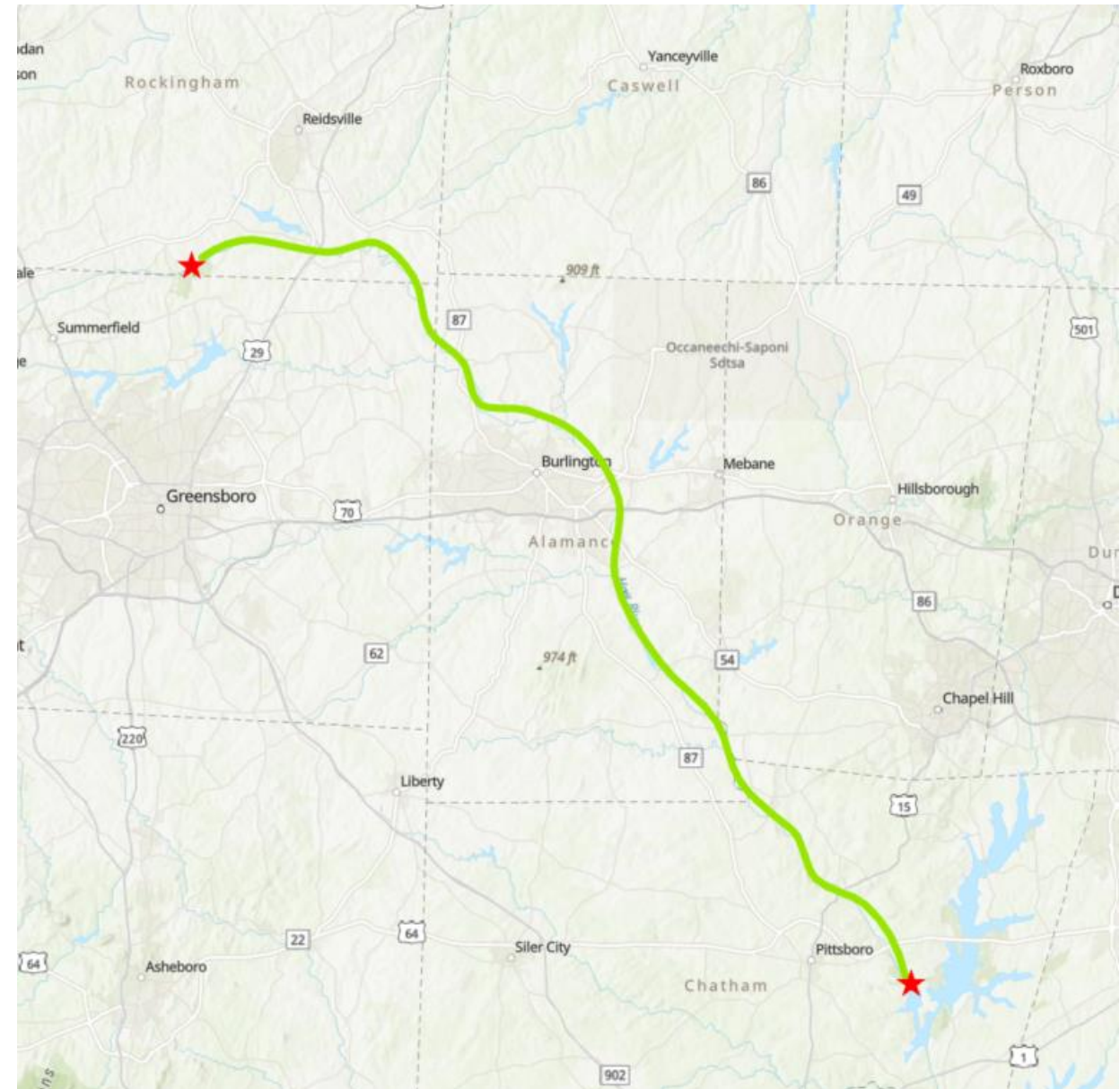
Project Context

- **The Haw River Trail Concept**
 - Hiking and Paddle Trail from Haw River State Park to Jordan Lake Recreation Area.
 - Passes through 5 NC Counties.
 - Authorized as an official state trail by NC Legislature in June of 2023.
 - Majority of trail development to date has occurred in Alamance County.



Project Context

- **The Haw River Trail Concept**
 - Hiking and Paddle Trail from Haw River State Park to Jordan Lake Recreation Area
 - Passes through 5 NC Counties
 - Authorized as an official state trail by NC Legislature in June of 2023
 - Majority of trail development to date has occurred in Alamance County
 - Social trail and 3 existing paddle accesses in Chatham County



Project Context

- **The Study Area**
 - The study focused on the trail corridor within Chatham County.



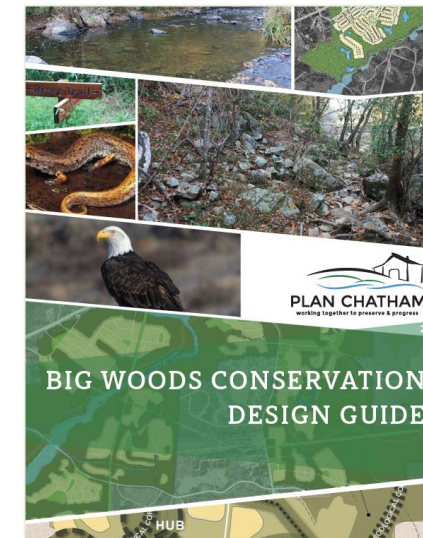
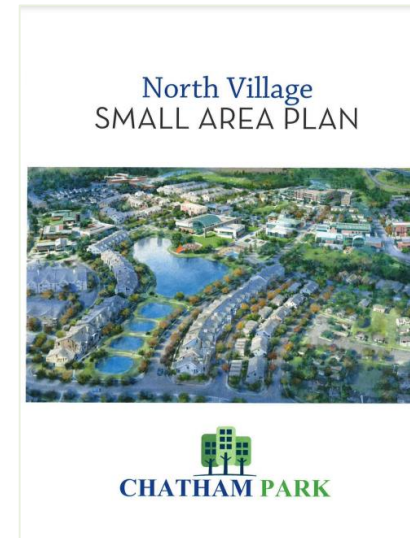
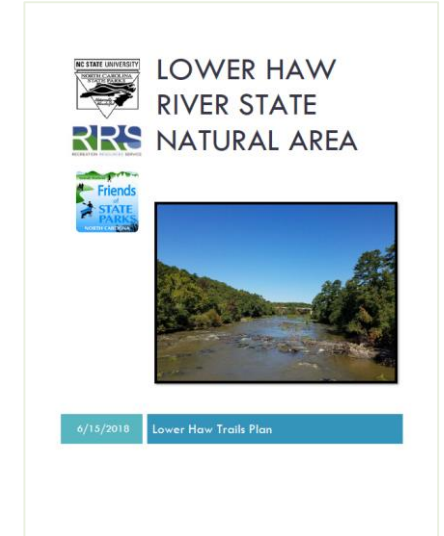
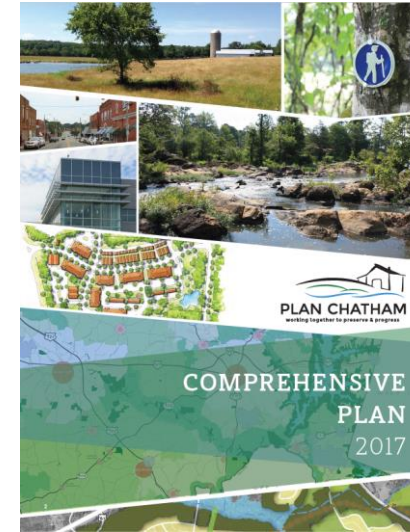
Project Context

- **The Study Area**
 - The study focused on the trail corridor within Chatham County.
 - Approximately 16 miles along the Haw River.



Project Context

- Past Plans
 - Numerous previously completed planning efforts have highlighted the Haw River Trail as a community priority for the county. This study was informed by these documents.



Project Context

- Chatham County at a Glance
 - As the county grows, demand for recreation opportunities will also increase.



TOTAL POPULATION

77,889

MEDIAN AGE

47.7
years

CHATHAM
COUNTY

39.4
years

NORTH
CAROLINA

AVERAGE HOUSEHOLD INCOME

\$84,555

CHATHAM
COUNTY

\$61,972

NORTH
CAROLINA



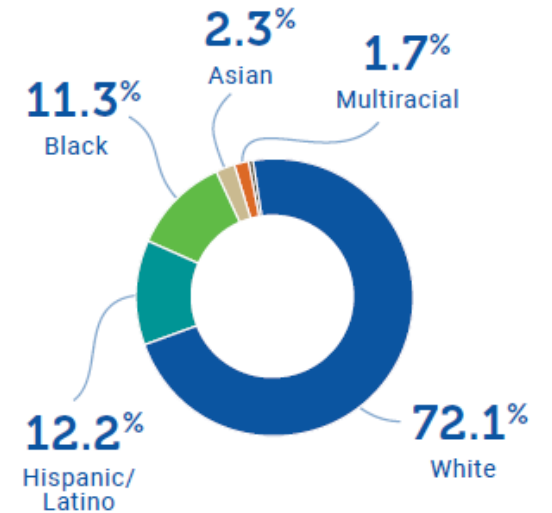
LANGUAGE SPOKEN
AT HOME

85.5%
English

11.7%
Spanish

1.8%
Other

RACE AND ETHNICITY



LESS THAN 1%:

American Indian/Alaska Native (0.3%)

Native Hawaiian and Other Pacific Islander (0.1%)

Sources:

County Health Rankings. Chatham, NC. <https://www.countyhealthrankings.org/explore-health-rankings/north-carolina/chatham?year=2023>

United States Census Bureau. *Community Profile: Chatham County, NC*. https://data.census.gov/profile/Chatham_County_North_Carolina?g=050XX00US37037

United States Census Bureau. American Community Survey (2021).

Project Context

- Chatham County at a Glance
 - As the county grows, demand for recreation opportunities will also increase
 - A strong need to provide nature-based recreation opportunities for all ages and wealth levels.



TOTAL POPULATION

77,889

MEDIAN AGE

47.7
years

CHATHAM
COUNTY

39.4
years

NORTH
CAROLINA

AVERAGE HOUSEHOLD INCOME

\$84,555

CHATHAM
COUNTY

\$61,972

NORTH
CAROLINA



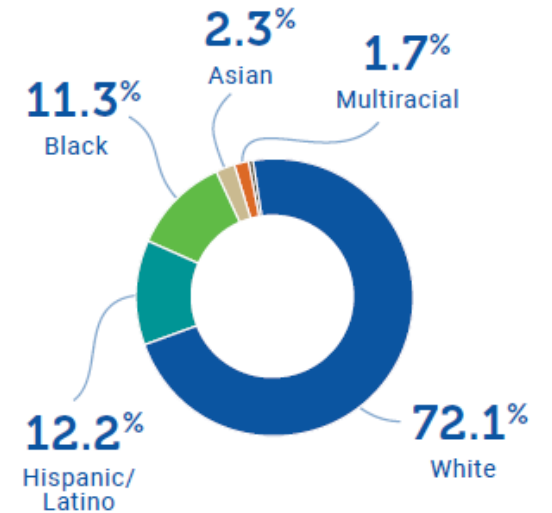
LANGUAGE SPOKEN
AT HOME

85.5%
English

11.7%
Spanish

1.8%
Other

RACE AND ETHNICITY



LESS THAN 1%:

American Indian/Alaska Native (0.3%)

Native Hawaiian and Other Pacific Islander (0.1%)

Sources:

County Health Rankings. Chatham, NC. <https://www.countyhealthrankings.org/explore-health-rankings/north-carolina/chatham?year=2023>

United States Census Bureau. *Community Profile: Chatham County, NC*. https://data.census.gov/profile/Chatham_County_North_Carolina?g=050XX00US37037

United States Census Bureau. American Community Survey (2021).

Project Context

- Chatham County at a Glance
 - As the county grows, demand for recreation opportunities will also increase.
 - A strong need to provide nature-based recreation opportunities for all ages and wealth levels.
 - Trails can improve the quality of life in Chatham County for all residents.



TOTAL POPULATION

77,889

MEDIAN AGE

47.7
years

CHATHAM
COUNTY

39.4
years

NORTH
CAROLINA

AVERAGE HOUSEHOLD INCOME

\$84,555

CHATHAM
COUNTY

\$61,972

NORTH
CAROLINA



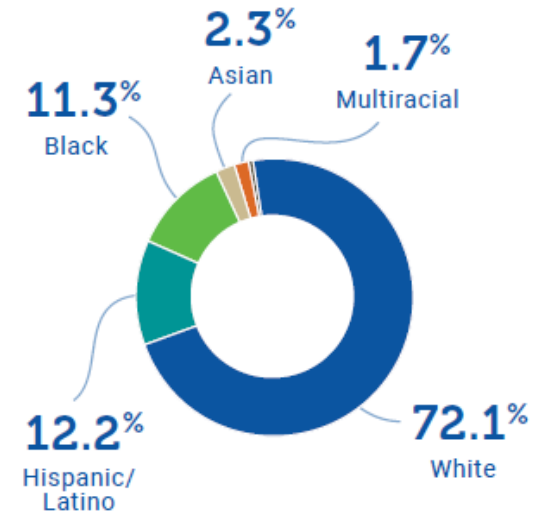
LANGUAGE SPOKEN
AT HOME

85.5%
English

11.7%
Spanish

1.8%
Other

RACE AND ETHNICITY



LESS THAN 1%:

American Indian/Alaska Native (0.3%)

Native Hawaiian and Other Pacific Islander (0.1%)

Sources:

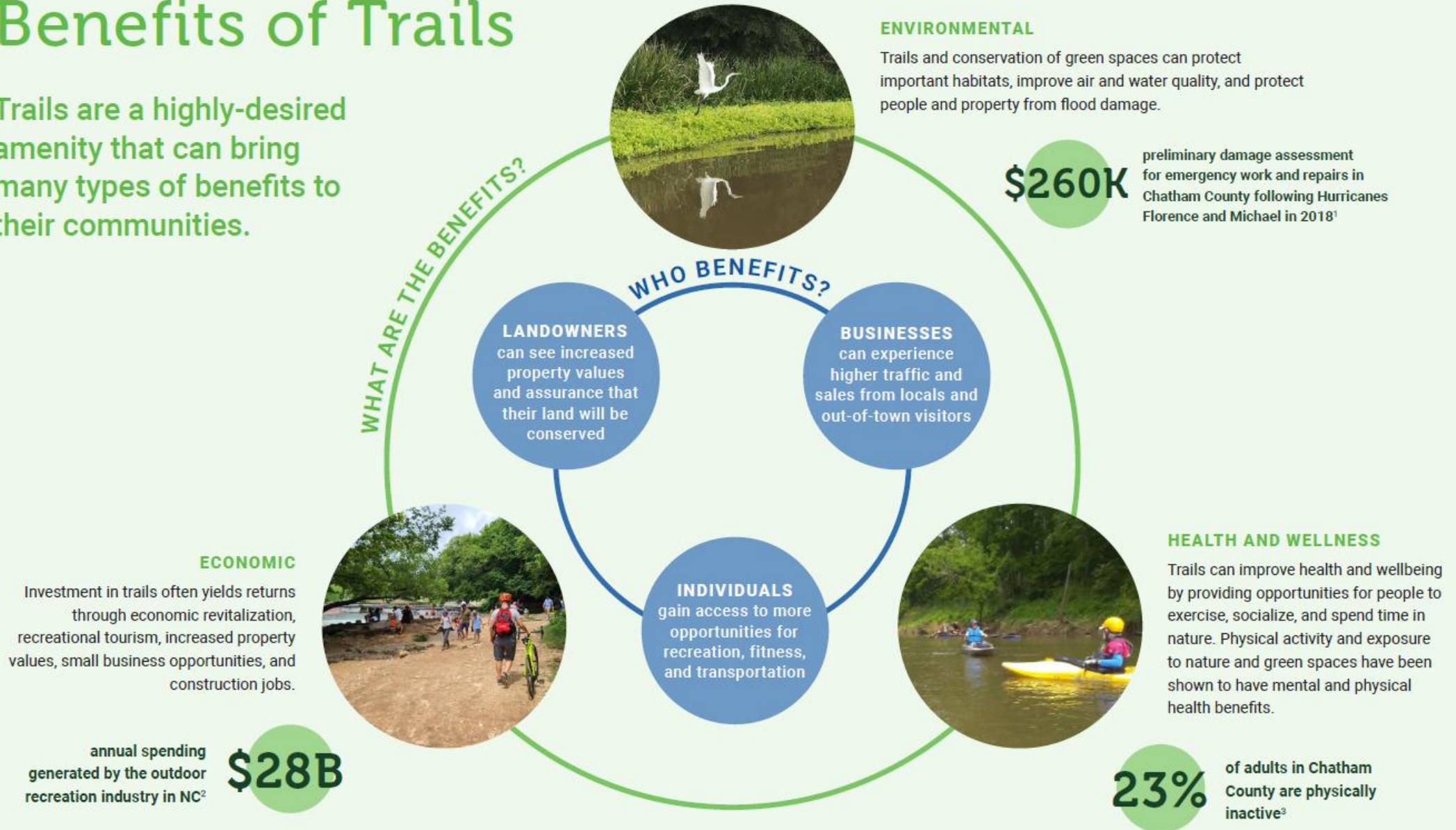
County Health Rankings. Chatham, NC. <https://www.countyhealthrankings.org/explore-health-rankings/north-carolina/chatham?year=2023>

United States Census Bureau. *Community Profile: Chatham County, NC.* https://data.census.gov/profile/Chatham_County_North_Carolina?g=050XX00US37037

United States Census Bureau. American Community Survey (2021).

Benefits of Trails

Trails are a highly-desired amenity that can bring many types of benefits to their communities.



When completed, the Chatham County sections of the Haw River State Trail could generate...

\$11.7M in annual trail visitor spending on goods, services, and lodging*

\$7,069 per day from hiking
\$45,934 per day from paddling

Based on previous studies of the observed benefits of other similar existing trails



140 hikers/day



140 paddlers/day

ABOUT THE ANALYSIS

For the purposes of this analysis, the "completed Haw River State Trail" refers to the long-term vision of a conceptual HRST through Chatham County, based on existing segments of trail and the vision laid out in this report for hiking trail on both sides of the river and improved hiking and paddle access the length of the river. Estimated benefits were based on independent research and data from local paddle operators and Alamance County.

Planning Process

- **The Steering Committee**
 - Representatives from local government, nonprofits, the business community, and outdoor interest groups.



Planning Process

- **The Steering Committee**
 - Representatives from local government, nonprofits, the business community, and outdoor interest groups.
 - Provided valuable input to the process and helped establish guiding principles for the study and implementation of the trail.



Planning Process

- Public Engagement Approach



STEERING COMMITTEE

The steering committee was made up of representatives from local governments, nonprofits, the business community, and outdoor interest groups.



PROJECT WEBPAGE

The Chatham County website hosted a webpage dedicated to the project, with background information and links to project resources and participation opportunities.



PUBLIC SURVEY

The survey was available as a hard copy at pop-up events and online from April to July 2023. 88 people completed the survey.



POP-UP EVENTS

The project team hosted a pop-up table at several events, providing an opportunity to answer questions and share information about the project:

- March 25, 2023 at Chatham County Spring Ag Fest
- April 1, 2023 at Eggstreme Spring Fling



ONLINE PUBLIC INPUT MAP

The online input map was available online from March to July 2023. Users could add suggestions for trail routes and amenities, mark key destinations, and identify barriers to trail development. Users provided a total of 90 map comments.



STAKEHOLDER INTERVIEWS

The project team conducted small group interviews with the following stakeholders:

- North Carolina State Parks
- North Carolina Wildlife Resources Commission
- North Carolina Department of Transportation
- Town of Pittsboro
- Friends of Lower Haw River State Natural Area
- Carolina Canoe Club
- Conservation groups
- Chatham Park
- Bynum Community
- Andy McMahan
- Redbud Community
- Retreat on the Haw



Existing Conditions

- Opportunities & Constraints



ONE RIVER, MANY LAND OWNERS

Land along the river in Chatham County is a patchwork of public and privately owned property.

Existing Conditions

- Opportunities & Constraints



ONE RIVER, MANY LAND OWNERS

Land along the river in Chatham County is a patchwork of public and privately owned property.



GROWING PAINS

Several developments planned and underway could add more than 30,000 residents to Chatham County in the next 20 years, increasing demand for outdoor recreation while reducing available undeveloped land.

Existing Conditions

- Opportunities & Constraints



ONE RIVER, MANY LAND OWNERS

Land along the river in Chatham County is a patchwork of public and privately owned property.



NATURE + NURTURE

The river corridor is largely undeveloped; opportunities for increased public use and recreation must be balanced with habitat preservation and conservation.



GROWING PAINS

Several developments planned and underway could add more than 30,000 residents to Chatham County in the next 20 years, increasing demand for outdoor recreation while reducing available undeveloped land.

Existing Conditions

- Opportunities & Constraints



ONE RIVER, MANY LAND OWNERS

Land along the river in Chatham County is a patchwork of public and privately owned property.



NATURE + NURTURE

The river corridor is largely undeveloped; opportunities for increased public use and recreation must be balanced with habitat preservation and conservation.



GROWING PAINS

Several developments planned and underway could add more than 30,000 residents to Chatham County in the next 20 years, increasing demand for outdoor recreation while reducing available undeveloped land.



LOCAL CHAMPIONS

The concept for the trail originated with community groups, and local support remains strong.

Existing Conditions



Recommendations from Previous Plans

This map highlights key recommendations from previous planning documents related to the Haw River State Trail and regional bicycle and pedestrian connectivity. For a written summary of previous plan recommendations, see APPENDIX G.

LEGEND

- CITY BOUNDARIES
- LOWER HAW RIVER SNA
- DEDICATED NATURE PRESERVE
- OTHER PUBLIC LAND
- 100-YEAR FLOODPLAIN

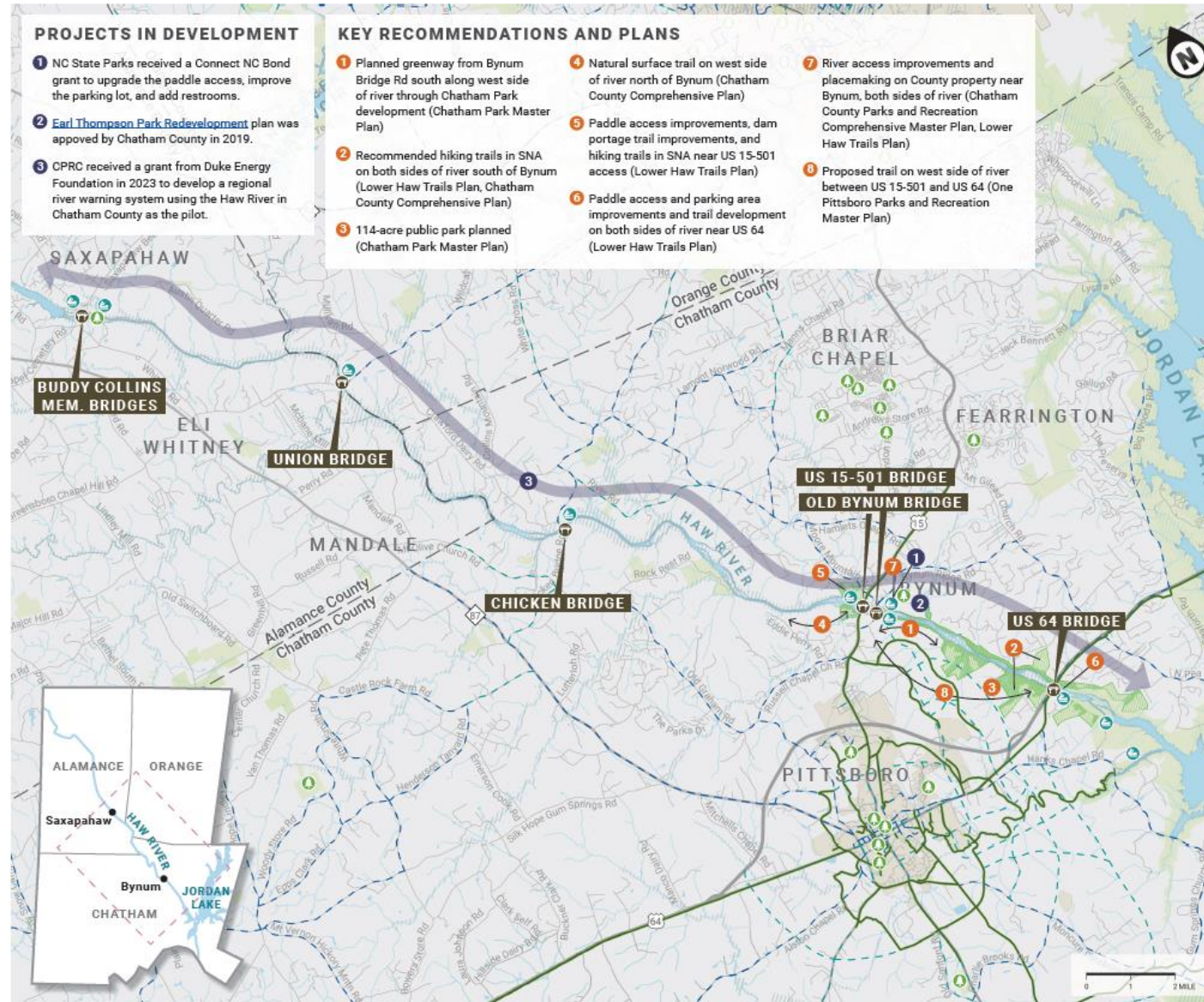
DESTINATIONS

- PUBLIC PADDLE ACCESS*
- PARK
- BRIDGE OVER HAW RIVER

PROPOSED FACILITIES

- PROPOSED SHARED-USE PATH
- PROPOSED BIKE LANE
- PROPOSED PAVED SHOULDER/SHARROW

*See page 15 for detailed descriptions of the existing paddle accesses in Chatham County.



Existing Conditions



EXISTING CONDITIONS:

Chatham County Line to Bynum

LEGEND

- CITY BOUNDARIES
- LOWER HAW RIVER SNA
- DEDICATED NATURE PRESERVE
- OTHER PUBLIC LAND
- 100-YEAR FLOODPLAIN

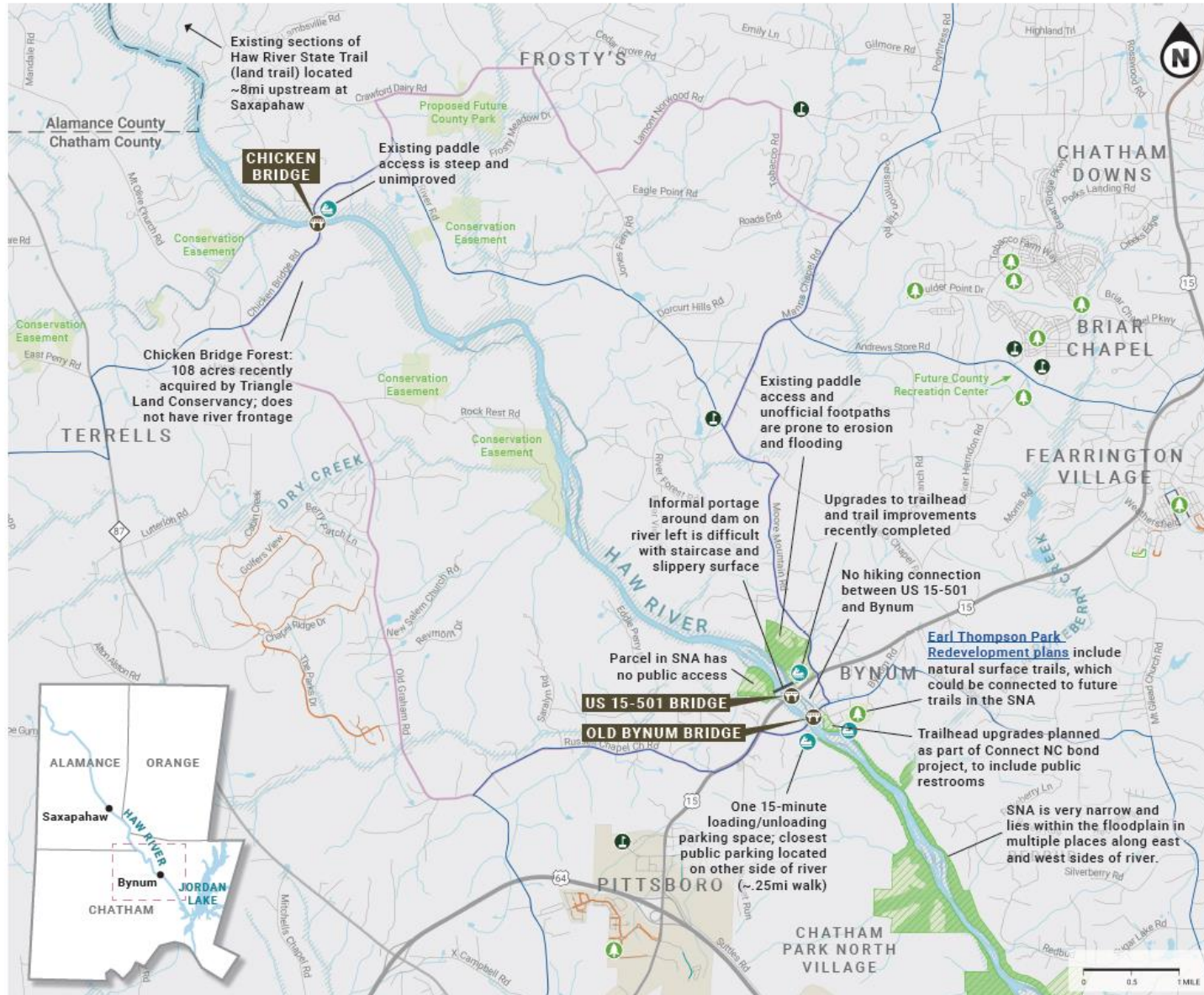
DESTINATIONS

- PUBLIC PADDLE ACCESS*
- PARK
- SCHOOL
- BRIDGE OVER HAW RIVER

EXISTING FACILITIES

- SHARED-USE PATH
- SIDEWALK
- BIKE LANE
- BIKE ROUTE/PAVED SHOULDER/SHARROW
- RECREATIONAL BIKE LOOP

*See page 15 for detailed descriptions of the existing paddle accesses in Chatham County.



Existing Conditions



EXISTING CONDITIONS:

Bynum to Jordan Lake

LEGEND

- CITY BOUNDARIES
- LOWER HAW RIVER SNA
- JORDAN GAME LAND
- JORDAN LAKE STATE RECREATION AREA
- DEDICATED NATURE PRESERVE
- OTHER PUBLIC LAND
- 100-YEAR FLOODPLAIN

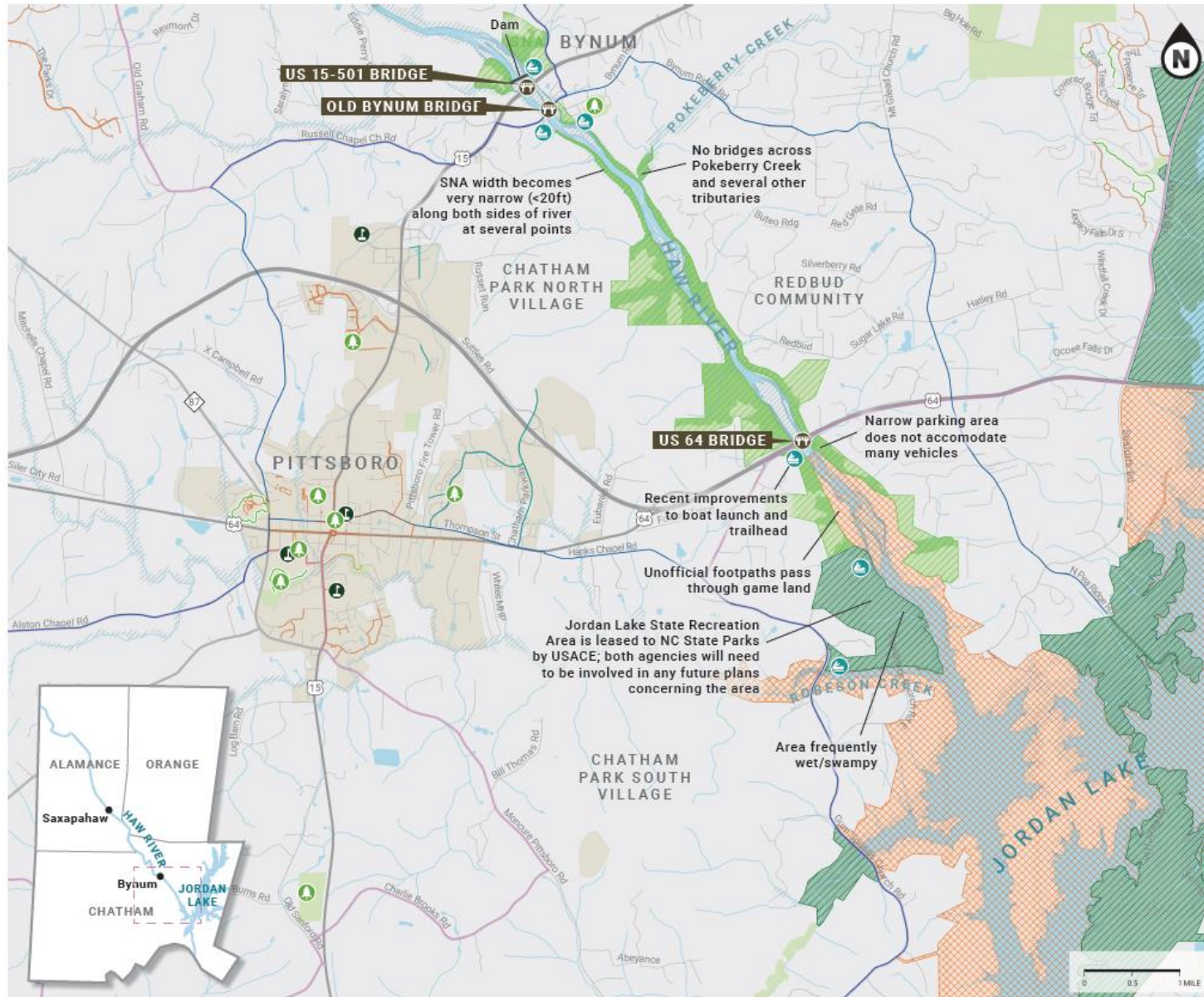
DESTINATIONS

- PUBLIC PADDLE ACCESS*
- PARK
- SCHOOL
- BRIDGE OVER HAW RIVER

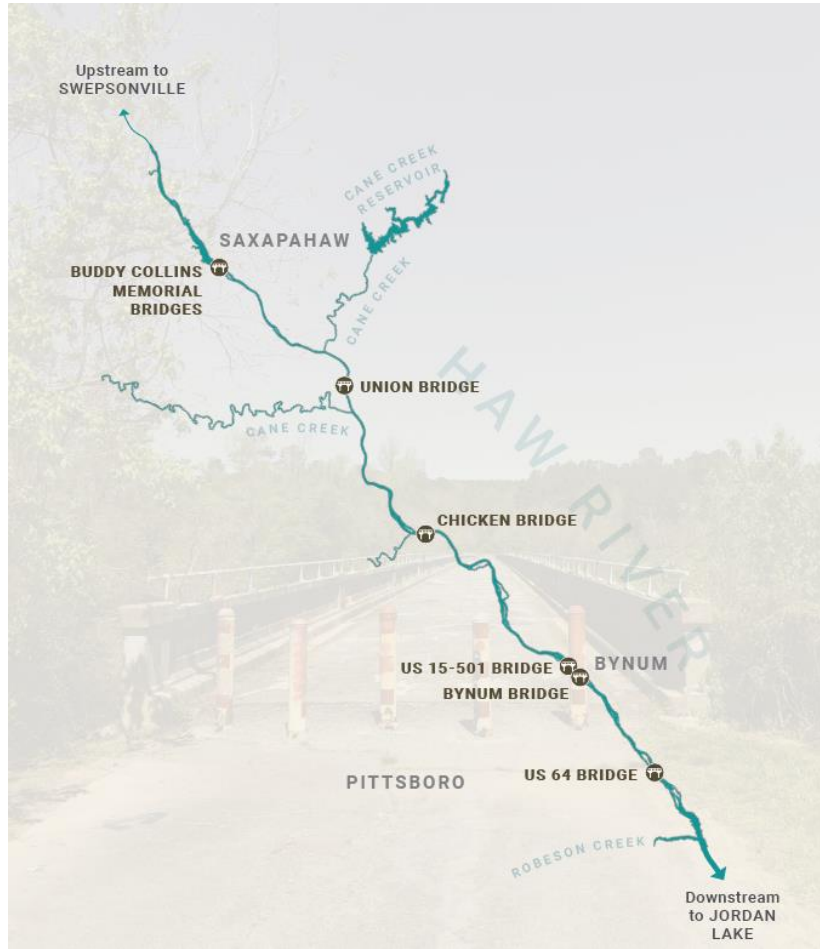
EXISTING FACILITIES

- SHARED-USE PATH
- SIDEWALK
- BIKE LANE
- BIKE ROUTE/PAVED SHOULDER/SHARROW
- RECREATIONAL BIKE LOOP

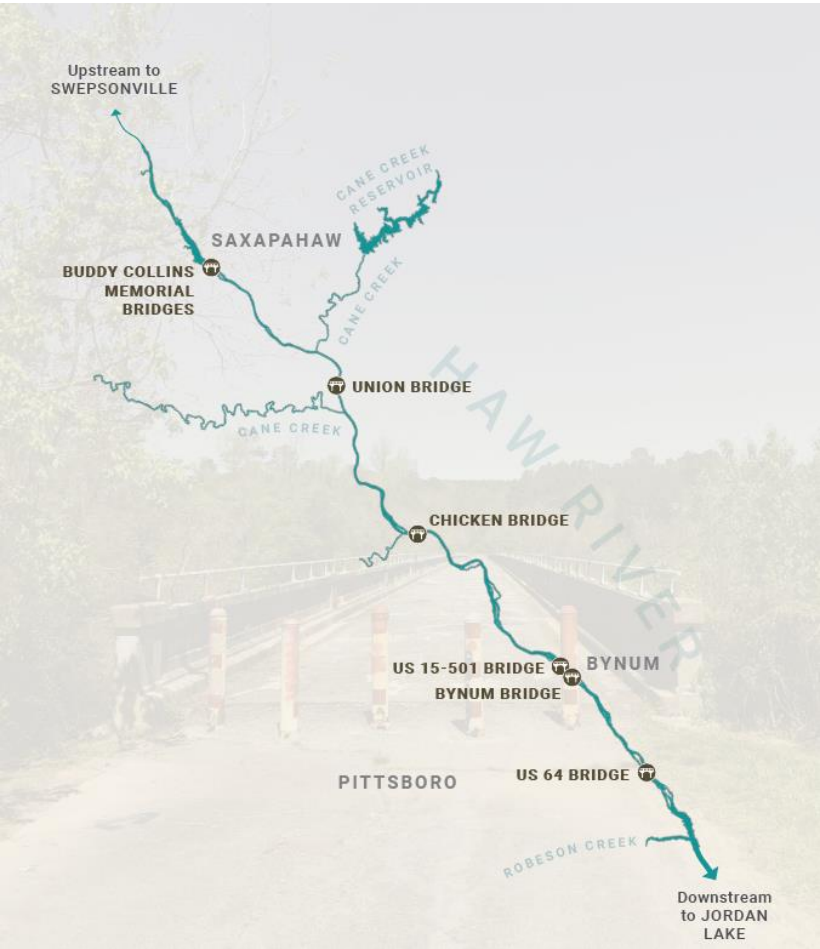
*See page 15 for detailed descriptions of the existing paddle accesses in Chatham County.



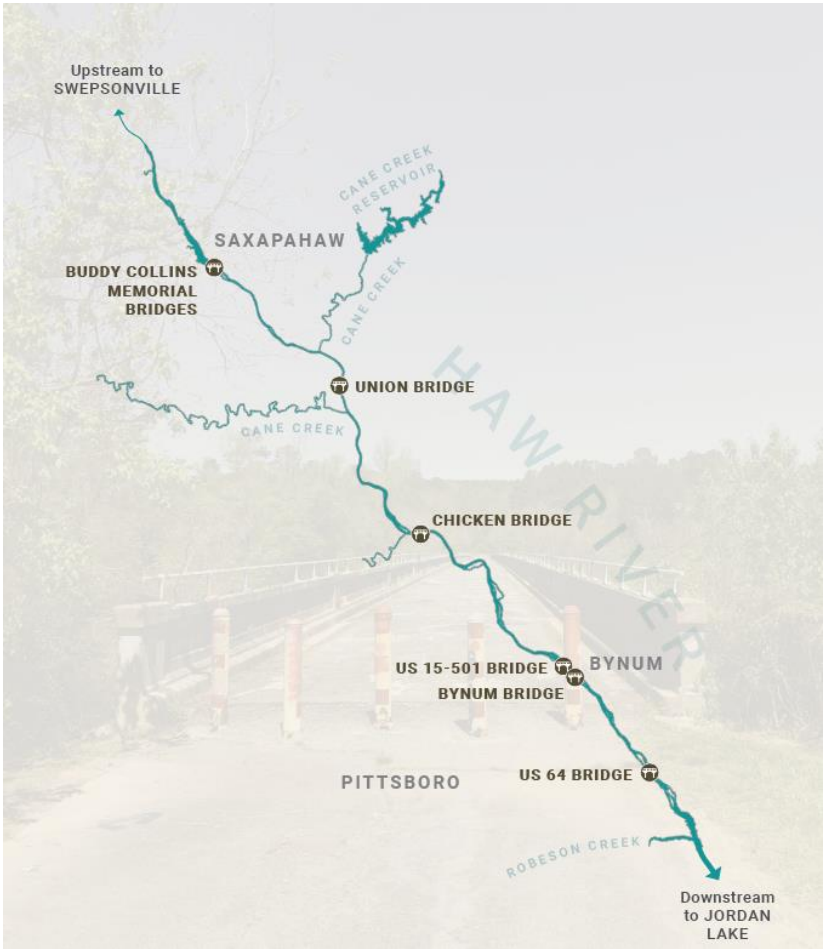
Existing Conditions



Existing Conditions



Existing Conditions



There are six existing paddle accesses on the Haw River in Chatham County.

1. CHICKEN BRIDGE PADDLE ACCESS
Steep drop off with no structures, located approximately 400ft from the parking area along a footpath. The parking area is owned by NCDOT, but maintenance arrangements are needed.

2. US 15-501 PADDLE ACCESS
Natural bank that is often subject to erosion and flooding. Paddlers must carry boats approximately 600ft from the large parking area along a wooded footpath to reach the access. Access is located several hundred feet upriver from the Bynum Dam. The parking area is maintained by Chatham County.

3. SOUTH BYNUM RIVER ACCESS
A natural beach (Bynum Beach) located approximately 200ft from parking area. Parking area has only one 15-minute loading spot, and parking is restricted on the surrounding streets. Therefore, paddlers must typically unload their boats, move their vehicles to the Bynum Mill Paddle Access (a 1.5-mile drive), then walk back over the pedestrian bridge to reach their boats (a 0.2-mile walk). The access is maintained by Chatham County.

4. BYNUM MILL PADDLE ACCESS
Natural earth/informal launch. Paddlers must carry boats from parking lot approximately 200ft on a difficult footpath. Trash cans are currently emptied by volunteers, but a long-term maintenance arrangement is needed.

5. US 64 PADDLE ACCESS
Recently upgraded staircase and boat slide located directly adjacent to a large parking area. The parking area and access are maintained by Chatham County.

6. ROBESON CREEK CANOE LAUNCH
Floating dock with ramp and ladder located approximately 100ft from the parking area. Users report that this design can be difficult to use with larger kayaks and canoes. This access is maintained by NC State Parks.

Public Engagement Summary

This planning process included public outreach and engagement. The goals were to understand the public's priorities and concerns with regard to the development of walking and paddle trails along the Haw River.

This page highlights key survey results and recurring themes heard throughout the input process. Small-group interviews with stakeholders were also conducted. For a summary of each stakeholder interview, see **APPENDIX F**.



"What trail features are most important to you?"

Respondents could select multiple answers; top three results shown

- **75%** Parking at trailheads
- **53%** Trashcans and pet waste stations
- **43%** Water fountains/restrooms at trailheads



None of the Haw River accesses in Chatham County have restrooms or water fountains

79%

of respondents said the development of the Haw River State Trail in Chatham County is **"very important"** to them.

"What are the most important benefits and uses of the trail?"

Respondents could select multiple answers

- **96%** Access to nature and the outdoors
- **89%** Recreation/fitness
- **79%** Habitat and environmental protection/awareness
- **43%** Economic development
- **11%** Transportation/connectivity
- **3%** Other



INTERACTIVE ONLINE MAP

Feedback received through the online map generally aligned with the themes in the survey responses. Commenters suggested additional paddle accesses, desired trail connections and amenities, and pointed out destinations along the corridor. Some expressed concerns about inadequate parking, trail and trailhead maintenance/cleanliness, impacts to wildlife, and traffic.

KEY THEME: BALANCING GROWTH WITH STEWARDSHIP

Chatham County is growing quickly, with the Chatham Park development alone expected to add 60,000 residents over the next few years. While this growth represents opportunities, such as more parks and amenities, many current residents are also concerned with mitigating the potential impacts this growth could have on the natural environment and scenic beauty of the undeveloped Haw River corridor.

"The Haw River has the most scenic and enjoyable paddling experience in our region. [Trail] development would increase its appeal as a tourist destination."

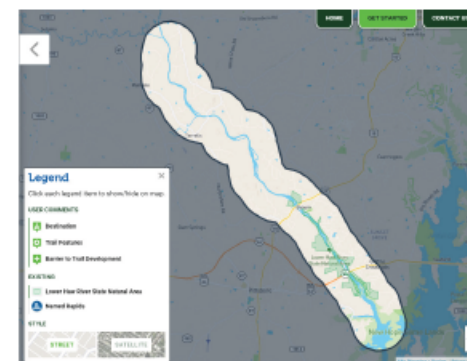
—Public survey respondent

"The lands around the Haw River are experiencing heavy development. As such, I hope the public lands adjacent to the Haw are kept as natural as possible."

—Public survey respondent

"Conservation through recreation is an important way to protect our natural resources along the river."

—Public survey respondent



Screenshot of interactive online map

Partners and their Roles

LEAD AGENCY

Chatham County

- Pursue trail implementation and funding opportunities, including ways to leverage funds and technical assistance across federal, state, local, private, and non-profit sources.
- Work with NC State Parks on trail implementation on SNA land and beyond as HRST has become the newest state trail.
- Establish development policies that require some form of trail/land dedication and work with developers to dedicate trail and trail right-of-way during projects near the Haw River.
- Work with voluntary landowners to acquire trail easements for the HRST.
- After major sections are completed, coordinate with project partners on a comprehensive hiking and paddle wayfinding system.
- As improvements are made, maintain a GIS database of trails and access amenities that are existing and in-development and share mapping updates with project partners.

PRIMARY PARTNERS

NC State Parks

Work closely with Chatham County on trail implementation in SNA and other State Parks land, and provide financial and technical support as the newest state trail grows.

Haw River Trail Study Steering Committee

The steering committee for this study will be combined with the current FLOHA HRST committee and continue to meet every other month. Implementation subcommittees will be created as well.

SUPPORTING PARTNERS



State, Regional, and Local Government

- **NCDOT DIVISION 8:** Support Chatham County in access and trail improvements in NCDOT right-of-way as well as walking and biking connectivity to access points along NCDOT roads as opportunities arise.
- **NC WILDLIFE RESOURCE COMMISSION:** Support Chatham County on developing a strategy for appropriate trail connectivity to game land as well as educational signage and access management.
- **CPRC:** Coordinate with Chatham County and partners on funding opportunities; incorporate and prioritize proposed HRST projects and connectivity within long-range transportation plans.
- **ALAMANCE COUNTY:** Coordinate with Chatham County on county to county HRST connectivity opportunities as well as lessons learned from HRST implementation in Alamance County.
- **TOWN OF PITTSBORO:** Coordinate with Chatham County and partners on connectivity and maintenance for sections in the Town of Pittsboro.



Non-profit Organizations

- Non-profit partners such as **FLOHA, HAW RIVER ASSEMBLY, CAROLINA CANOE CLUB, TRIANGLE LAND CONSERVANCY, THE CONSERVATION FUND, TRIANGLE TRAILS INITIATIVE, and BYNUM FRONT PORCH** continue to lead in many different areas of trail implementation, as they:
- Strategically pursue conservation of a contiguous corridor of land for the HRST and protection of natural resources along the Haw River.
 - Advocate for equity and inclusion in access to trails and the outdoors.
 - Promote public use of trails and awareness of the benefits of trails.
 - Propose new trail segments and project ideas.
 - Lead on implementation of new trail sections.
 - Lead on coordinating volunteer trail projects and maintenance of existing trails and access.
 - Advocate for HRST inclusion in local and regional trail plans.
 - Build public support for successful trail-related bond initiatives.
 - Advocate for safe and sustainable trail development.



Private Partnerships

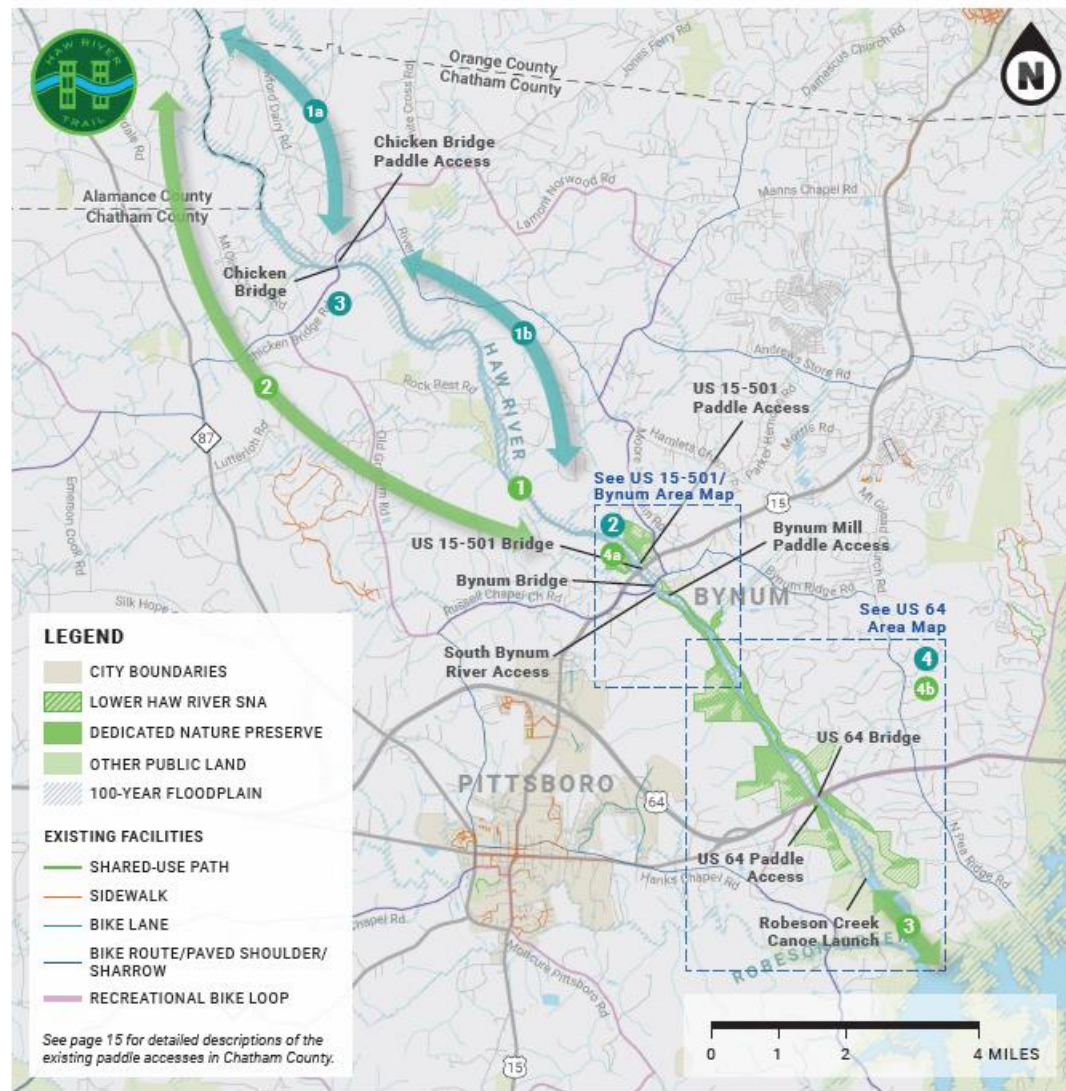
Project partners should communicate the benefits of the HRST as described in this plan to local businesses, employers, landowners, and developers.

- **LOCAL BUSINESSES AND OUTFITTERS:** Recognize the benefits of a complete HRST trail corridor; help promote project funding; and capitalize on increased business as trail segments are completed.
- **MAJOR EMPLOYERS:** Recognize the quality of life benefits that trails bring; champion the development of the trail through funding partnerships; and promote the trail as a means of talent recruitment and retention.
- **ADJACENT LANDOWNERS:** Landowners wishing to dedicate land or easements for the HRST should contact Chatham County Parks and Recreation.
- **CONSULTANTS:** Provide guidance to Chatham County and partners on project development, sustainable trail design, and trail construction services.
- **DEVELOPERS:** Promote the quality of life benefits that trails bring; champion the development of the trail through funding and development partnerships; and market the trail as a selling point to potential buyers.

Near-Term Opportunities



Mid-and Long-Term Opportunities

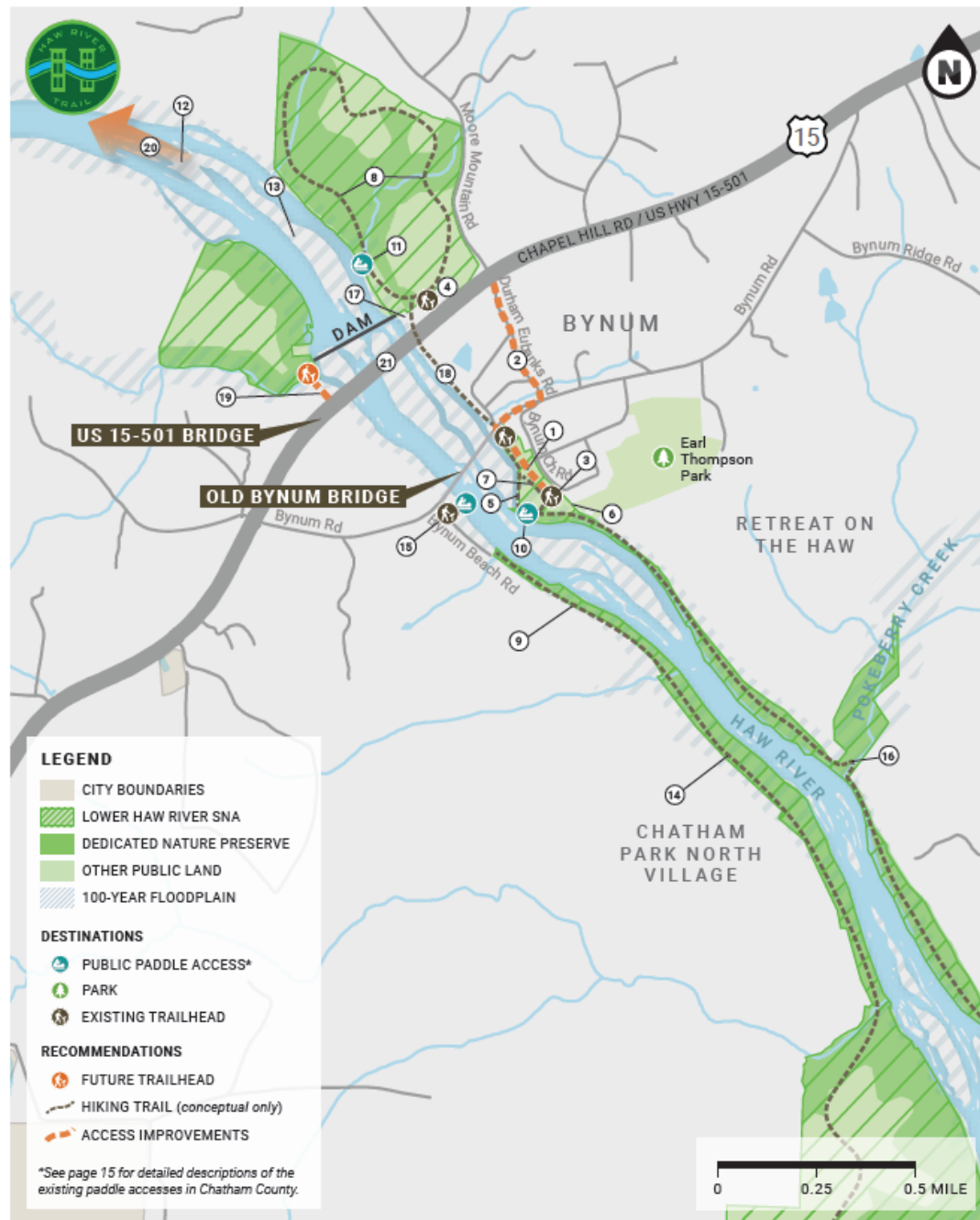


MID-TERM OPPORTUNITIES

- 1 Add New Paddle Accesses** between Union Bridge and Chicken Bridge, and between Chicken Bridge and Bynum Bridge (either side of river).
GROW SUSTAINABLY
- 2 Complete Trail Gaps near US 15-501 and Bynum** to create a continuous, publicly accessible corridor.
BE A GOOD NEIGHBOR
- 3 Connect Chicken Bridge Forest to the River** by working with willing landowners.
GROW SUSTAINABLY
BE A GOOD NEIGHBOR
- 4 Add Trailhead North of US 64** as the population increases and demand for trail access grows.
GROW SUSTAINABLY

LONG-TERM OPPORTUNITIES

- 1 Accessible Trail and Paddling Areas** should be provided throughout the corridor as the trail is developed.
PRIORITIZE EQUITY
- 2 Hiking Trail Connections to Alamance County** are a long-term goal.
GROW SUSTAINABLY
- 3 Hiking Trail Connections to Robeson Creek and Jordan Lake** are a long-term goal.
GROW SUSTAINABLY
- 4 Shared-use Paths along US 15-501 Bridge and US 64 Bridge** to physically separate hikers and bicyclists from vehicle traffic.
GROW SUSTAINABLY
- 5 Shared-use Paths along US 15-501 Bridge and US 64 Bridge** to physically separate hikers and bic



US 15-501/Bynum Area Map

NEAR-TERM OPPORTUNITIES

Bynum Access Management

- Construct an approximately 650-foot roadway connection between the Bynum Rd entrance parking lot and the lower parking lot.
- Add wayfinding signage to direct vehicular traffic from US 15-501 along Durham Eubanks Rd to the Bynum Rd entrance parking lot, directing trail traffic away from residential streets and designating the Bynum Rd access as the main entrance for vehicular access.
- With the construction of a road connecting the two Bynum trailheads, the Bynum Church Rd entrance (lower trailhead) should be gated and used only as a service and emergency entrance.

Trailhead Improvements

- Work with NCDOT to install vault toilets at US 15-501 parking area.
- Create history walk with signage around meadow and construct outdoor education pavilion at Bynum Mill.
- Create a formal trail connection from the lower trailhead to the future natural surface trails and other amenities at the [redeveloped Earl Thompson Park](#). The park's parking area will be located at the northern end, while the trails will connect at the southern end.
- Create an ADA-accessible unpaved path (such as crushed limestone) connecting the two Bynum parking lots.

Hiking Trail Development

- Develop a formal 1-2 mile hiking loop that protects ecologically sensitive areas. Some boardwalk will need to be constructed in flood-prone areas. Additionally, a bridge over Miles Creek will need to be constructed.
- Explore the potential to co-locate an unpaved trail along road bed adjacent to SNA, in coordination with Chatham Park development. Create additional public access points as part of Chatham Park connectivity to the hiking trail.

Paddle Access and Safety Improvements

- Paddle access improvements funded as part of the Connect Bond project at the lower trailhead.

- Paddle access improvements and riverbank restoration needed above the dam river left; close the current access location and create a new access approximately 300 feet upstream, further away from the dam.
- Add a sign at this location at the beginning of the island to direct paddlers left to the paddle access (to keep away from approaching dam).
- Add a sign at this location to alert paddlers river right of island of an additional way to get to the paddle access and away from the dam.
- Work with NC State Parks, Carolina Canoe Club, and Chatham Park to identify a location and features for a new paddle access in this vicinity. This will relieve some pressure on the Bynum Beach Rd access (where parking currently is not allowed) and provide connectivity to Pittsboro and future residences in Chatham Park.

South Bynum River Access

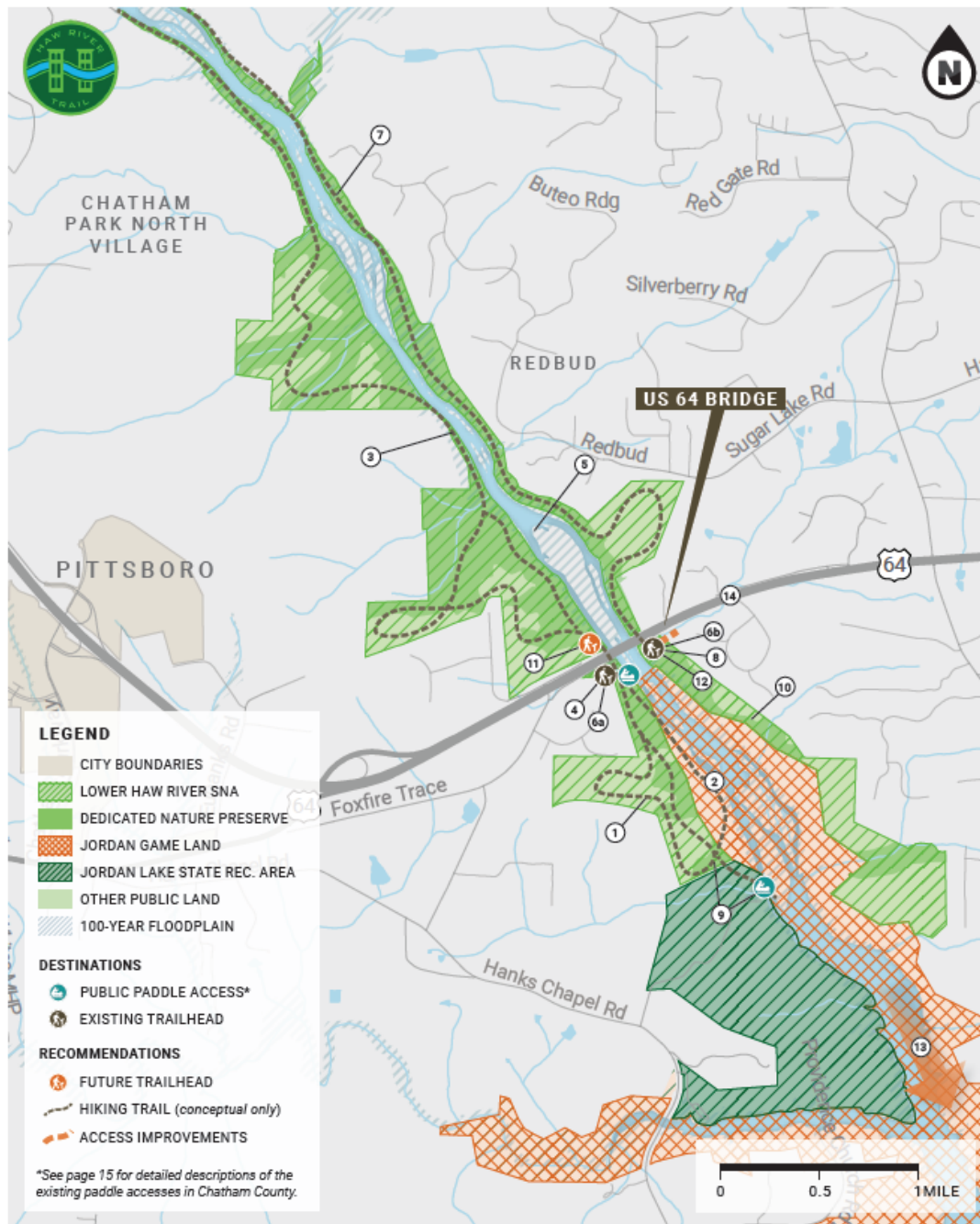
- Explore options to add parking by: reinstating parking in NCDOT right-of-way, constructing parking on County-owned parcel, or constructing parking up the hill on Chatham Park property.

MID-TERM OPPORTUNITIES

- Develop sustainable trail and bridge over Pokeberry Creek.
- Improve the portage trail routing and surface at the Bynum Dam.
- Easement needed to create trail connection linking the US 15/501 trailhead and the Bynum trailheads.
- Potential development of trails in the SNA property river right north of US 15-501, in conjunction with NC State Parks.

LONG-TERM OPPORTUNITIES

- Continue working with willing landowners to acquire trail easements and fee simple purchases, and continue developing the trail north to Chicken Bridge Rd.
- Create a shared use path along the US 15/501 bridge to physically separate hikers (and bicyclists) from automobile traffic.



US 64 Area Map

NEAR-TERM OPPORTUNITIES

Hiking Trail Development

- Develop formal hiking trail loop in SNA property downstream river right from the US 64 access. A bridge will be needed across the tributary just southwest of the US 64 trailhead parking lot.
- Develop a formal trail from the river right US 64 access to the current extent of the existing informal trails (approximately 3,000 feet), working with Jordan Game Land managers. Any trail development on game lands should have enhanced trail markings to delineate boundaries along with game lands rules and safety signage.
- Sustainable trail development along west of the river in coordination with Chatham Park for voluntary easements in narrow areas of the SNA; will also need bridges over several tributaries.

Paddle Access and Safety Improvements

- Add vault toilets at existing paddle access/parking area.
- Add a sign at the beginning of island to alert paddlers to stay river right to get to the US 64 access.

Jordan Game Land Education and Safety

- Add signage at trailhead about state game lands rules and safety (both US 64 accesses). Future trail improvements should include enhanced trail markings to delineate game lands boundaries.

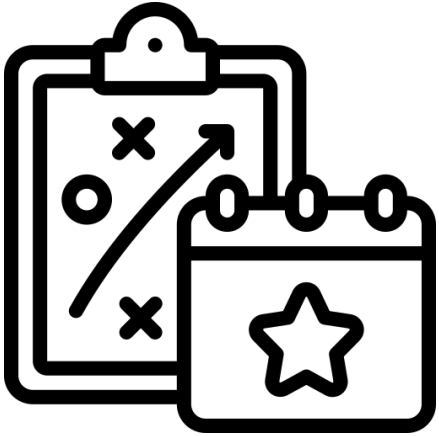
MID-TERM OPPORTUNITIES

- In narrow areas of the SNA on the east side of the river with many adjacent property owners, sustainable formal trail development may not be possible without acquiring additional easements from willing landowners.
- Create an improved paddle access river left at US 64 and improve trail connection from parking lot. This is especially important for paddlers who put in upstream and are approaching US 64 river left of the 3,200' island that ends just past US 64 but begins upstream of US 64.
- Work with NC State Parks and USACE to create a formal trail connection between the Robeson Creek access and the US 64 access and trails through Jordan Lake State Recreation Area.
- Work with NC State Parks to determine an appropriate level of trail development in SNA river left and south of US 64 (balancing the need for trail access with protection of species and habitats).
- Service road ends near river; consider creating future trailhead here as the trail system grows and additional access are needed.
- Expand existing US 64 parking area based on need as trail use increases.

LONG-TERM OPPORTUNITIES

- Work with land managers to continue trail development to Robeson Creek and Jordan Lake State Recreation Area.
- Create a shared use path along the US 64 bridge to physically separate hikers (and bicyclists) from automobile traffic.

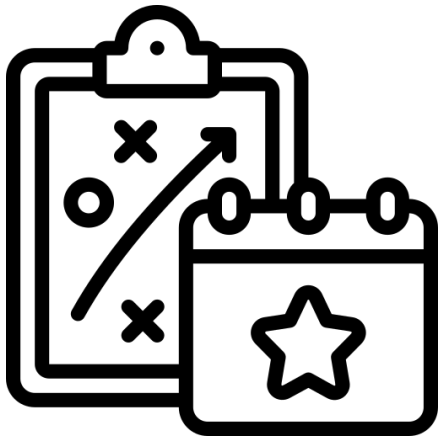
Resources



Program & Policy

- Trail Count/ Tracking Use
- Maps and User Guides
- Safety Resources
- Policy Resources for Conservation and Public Use

Resources



Program & Policy

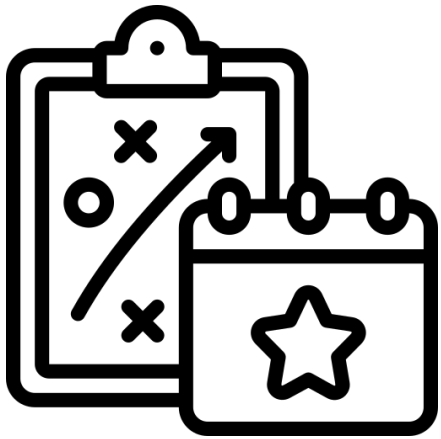
- Trail Count/ Tracking Use
- Maps and User Guides
- Safety Resources
- Policy Resources for Conservation and Public Use



Trail Design

- Sustainable Trail Design
- Blueway Design
- Accessibility & Safety
- General Trail Feature Costs

Resources



Program & Policy

- Trail Count/ Tracking Use
- Maps and User Guides
- Safety Resources
- Policy Resources for Conservation and Public Use



Trail Design

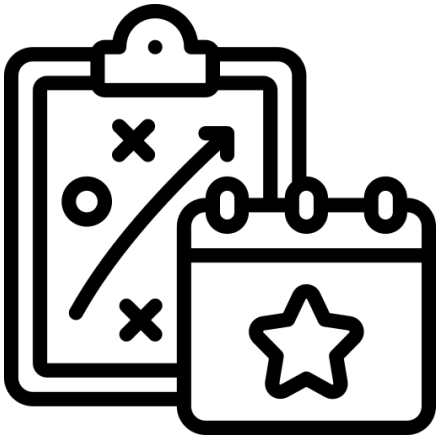
- Sustainable Trail Design
- Blueway Design
- Accessibility & Safety
- General Trail Feature Costs



Operations & Maintenance

- Strategies & Actions

Resources



Program & Policy

- Trail Count/ Tracking Use
- Maps and User Guides
- Safety Resources
- Policy Resources for Conservation and Public Use



Trail Design

- Sustainable Trail Design
- Blueway Design
- Accessibility & Safety
- General Trail Feature Costs



Operations & Maintenance

- Strategies & Actions



Funding

- Federal
- State
- Local
- Private



2023

HAW RIVER TRAIL STUDY

PREPARED FOR: Central Pines Regional Council & Chatham County

PREPARED BY: Alta Planning + Design

This study was funded by a grant from the U.S. Economic Development Administration.