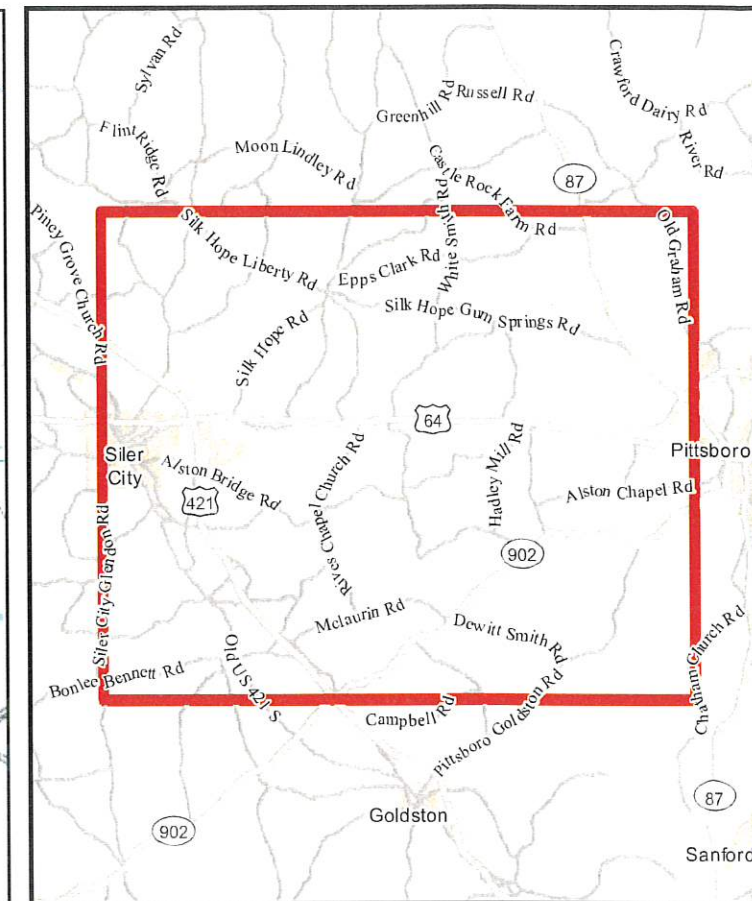
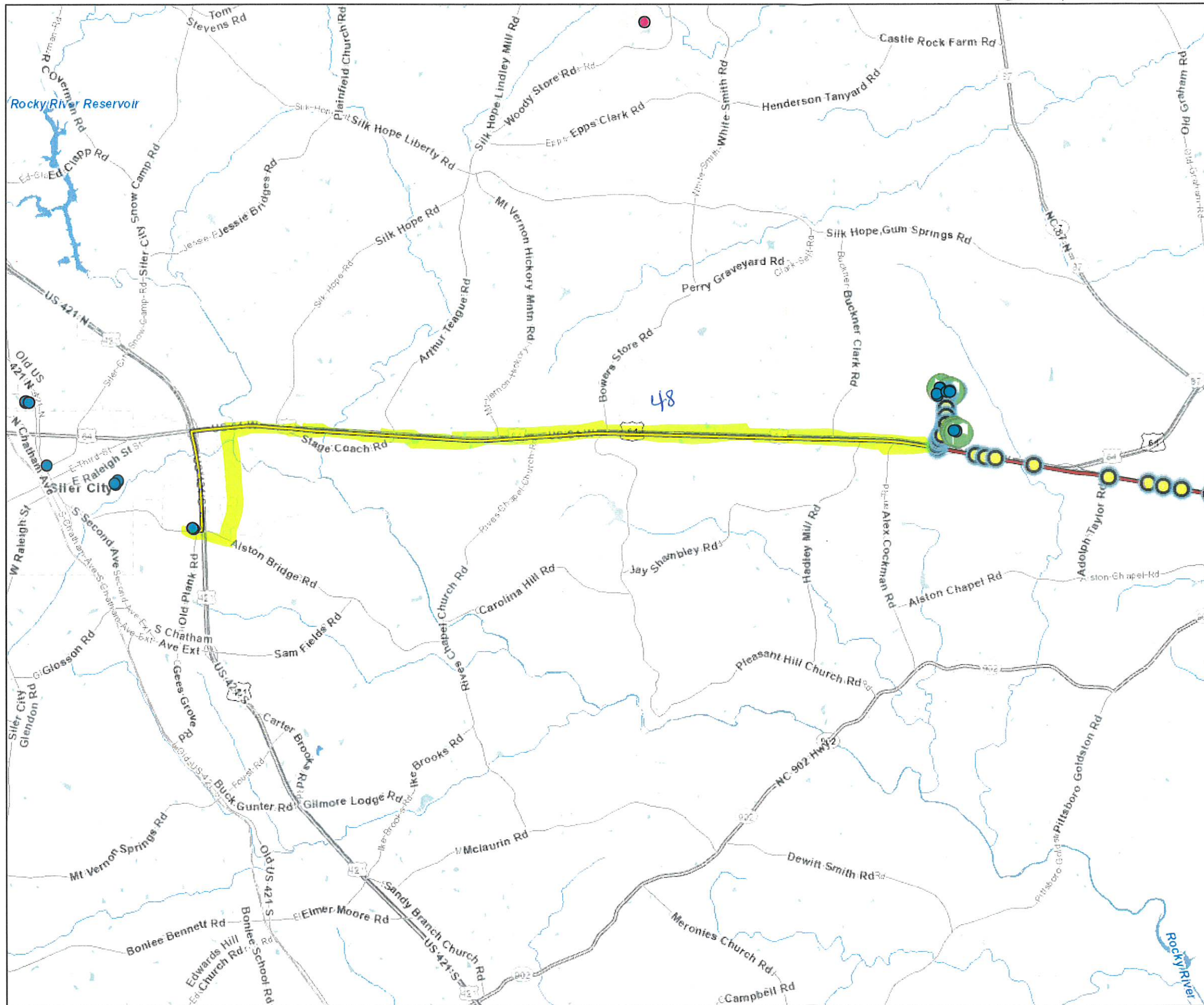


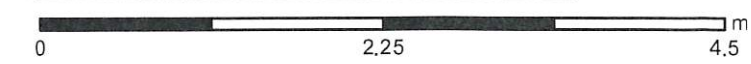
Chatham County Fiber Map

Preferred Path (no partnership)



Legend

- IT Closets (Blue circle)
- MIS Facilities (Pink circle)
- Fiber Access Locations:
 - Hand Hole (Yellow circle)
 - Building Access Point (Green circle)
- Proposed Chatham County Fiber Lines (Yellow line)
- Existing Chatham County Fiber Lines:
 - Aerial (Green line)
 - Buried (Red line)
- RoadCenterlines_72K:
 - Freeway (Thick grey line)
 - Highway (Medium grey line)
 - Major Arterial (Thin grey line)
 - Minor Arterial (Thin grey line)



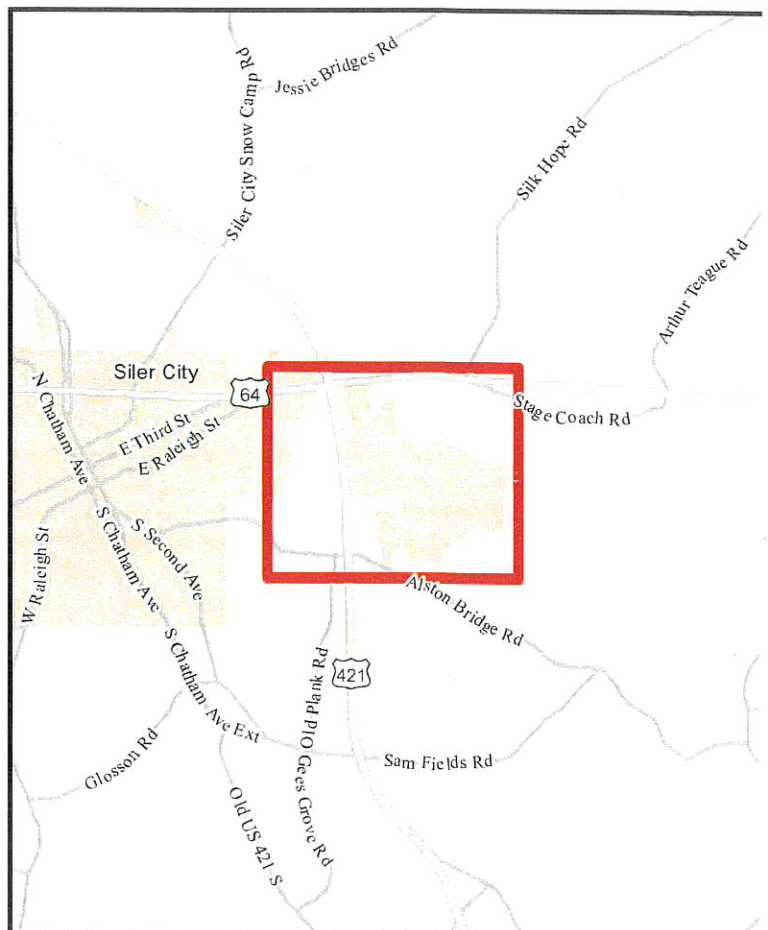
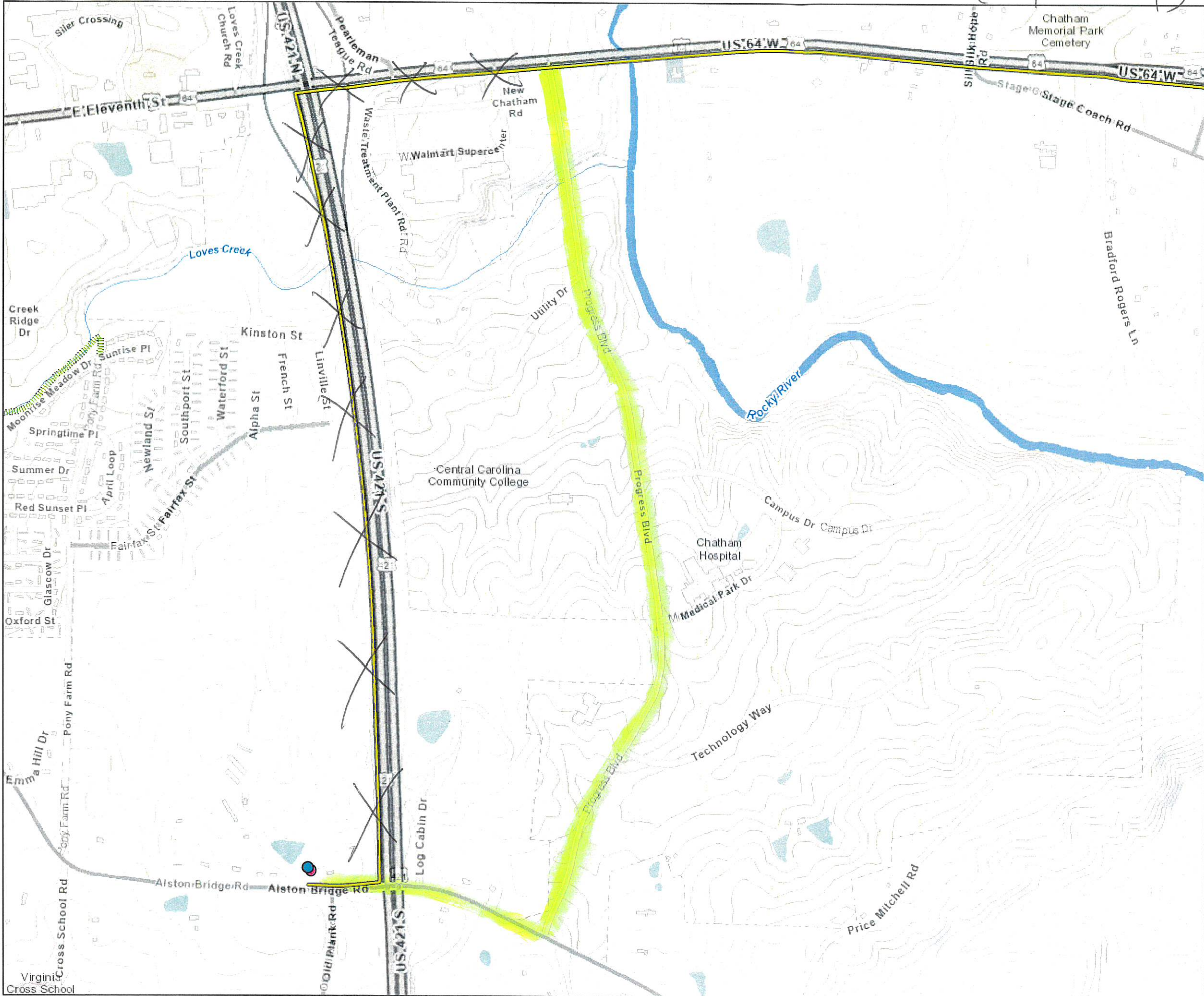
Service Layer Credits: Esri, Inc.,
 City of Naperville, Illinois
 Performance Cabling, Chatham
 County, Chatham County GIS

CHATHAM COUNTY
 NORTH CAROLINA

Date: 6/27/2023
 Time: 1:18:24 PM

Chatham County Fiber Map

Preferred Path (no partnership)



Legend

	IT Closets		RoadCenterlines_9K
	MIS Facilities		Freeway
	Proposed Chatham County Fiber Lines		Highway
	Aerial		Major Arterial
	Buried		Minor Arterial
			Collector
			Local



Service Layer Credits: Esri, Inc.,
City of Naperville, Illinois
Performance Cabling, Chatham
County, Chatham County GIS



Date: 6/27/2023



1500

1501

Splice 7,8,9 and 19 to t

Splice 7,8,9 and 19 to the new fiber Existing E

Splice 12 Strands Splice

Hand Hole #1 Tower

Existing Hand H

Hand Hole

60,000 feet (Red Line) ↓

U.S. Hwy 64

64

64

3670 Alston Bridge Rd, Siler City, NC 27344

2113

Splice 12 South back to 64 and 12 going North to creek

Hand Hole #1

Existing Hand Hole

Existing Hand Hole

Existing Hand Hole

Tower

Hand Hole

Renaissance Dr

Hand Hole

Hand Hole

64

