

SPOT 4.0 Methodology

The Methodology described herein is designed to enable County Staff, Pittsboro Staff, Siler City Staff, to rank projects by priority, in the event that technical scores from the North Carolina Department of Transportation (NCDOT) Strategic Planning Office of Transportation (SPOT) are not received on time to be submitted for consideration of Local Input Points from Triangle Area Rural Planning Organization (TARPO) Spring 2016. This Methodology aligns with the TARPO Project Prioritization Policy adopted in December 2015 and the TARPO Bicycle and Pedestrian Framework August 2015.

After Local Input Points are assigned to priority projects for all TARPO member, projects will be submitted to the NCDOT Strategic Planning Office of Transportation (SPOT) for evaluation and use in the Strategic Transportation Improvement process (STI).

This Methodology shall be used after receiving project technical scores from the NCDOT SPOT.

While the Methodology is designed to comprehensively address Chatham County's needs as a whole, based on technical criteria, there will always be factors that are not easily measured but should be considered in development of a ranked list. The following describes the steps staff will take to create a ranked list.

Preliminary Project Ranking

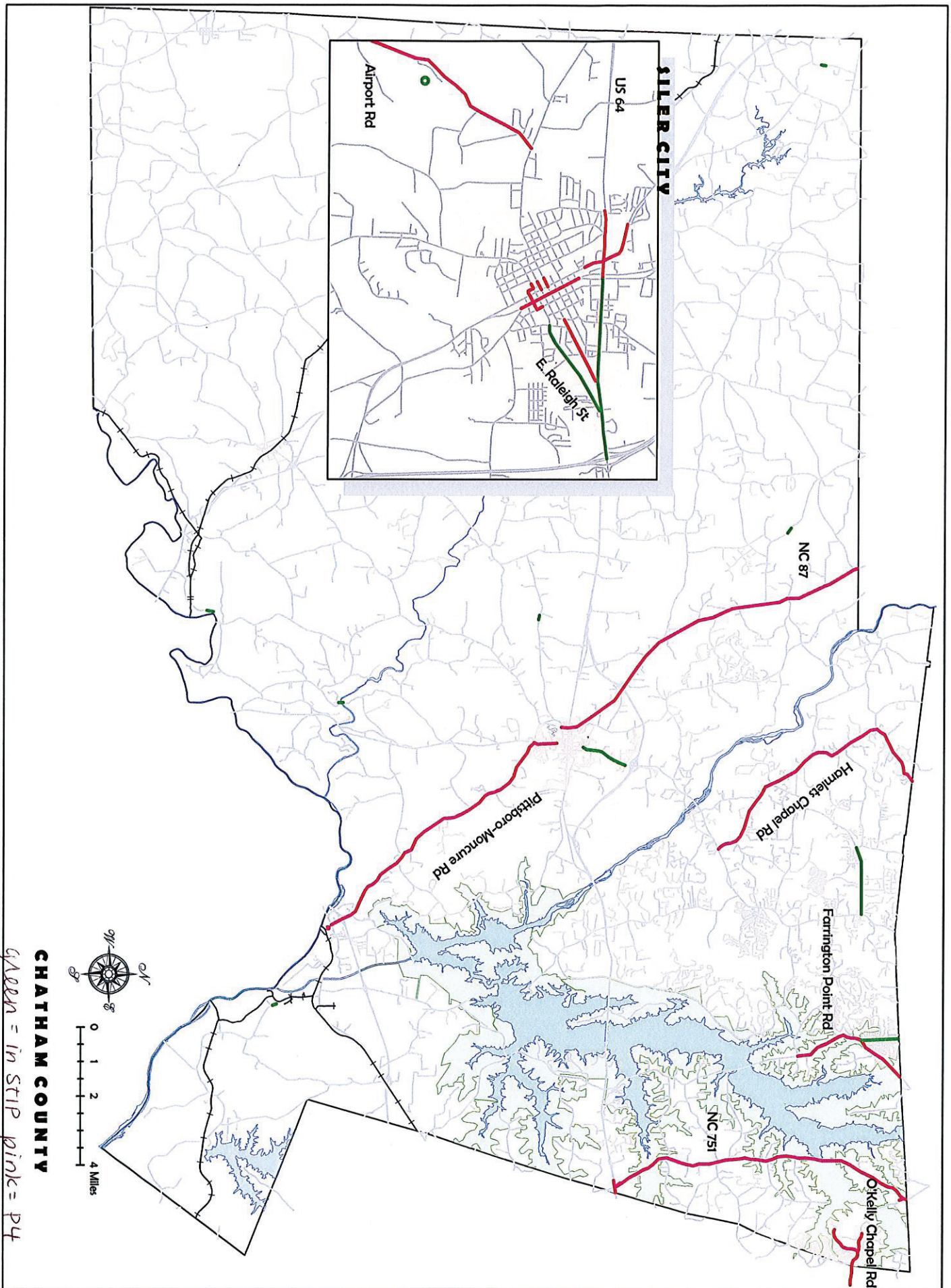
The raw scores received from the NCDOT quantitative evaluation process will serve as a quantitative basis for Chatham County, Siler City, and Pittsboro staff ranking of projects to be submitted to TARPO April 22nd 2016. Each project score will be a number out of 100 and is reflective of its competitiveness against other projects of the same mode of transportation and project category (Regional Mobility and Division Needs).

For the purposes of determining rank, Division Needs Scores will be used for all projects so that the highest raw scores will receive the highest ranking by staff. However, if a project categorized by Regional Impact has a higher score number in Regional Impact than in Division Needs, the higher category score will be used to determine rank.

Assessment and Finalization of Ranked List

Additionally, after performing the precursory ranking, staff will review projects beginning with the highest scoring and consider the following factors to determine if any changes should be made to the raw score rank:

- 1) Network Functionality
- 2) Timeline of Improvements/Impact on Existing Network
- 3) Geographic Balance



CHATHAM COUNTY

green = in STIP pink = P4

Project Number	Project Name	Description	Agency
B150436	3rd St, 2nd St, SR 1006 Raleigh St, Beaver St	Add ADA-compliant crosswalks & curb extensions at (1) Chatham Ave & 3rd St, (2) Chatham Ave & 2nd St, (3) Chatham Ave & Beaver St, (4) Birch Ave & 2nd St, (5) Birch Ave & Raleigh St, and add ADA-compliant at-grade rail crossings on 3rd St, 2nd St, and Raleigh St	RPO
H140377	US 64 /W 11th St	Add median/sidewalk/bike lanes from Greensboro Ave to Glenn Ave in Siler City	RPO
H090568	Pittsboro-Moncure Rd	Modernize Roadway (widen lanes to standard 12 ft lane widths), including paved shoulders	RPO
B140577	E 3rd St	Construct sidewalk on south side of E 3rd St	RPO
A130469	Siler City Municipal Airport	500' extension of Runway 22 and the parallel taxiway. Project also includes relocation of Airport Road (approximately 1,700 LF) to accommodate the runway extension and acquisition of approximately 2 acres of land to relocate Airport Road. (Includes Project Request Numbers: 3137)	RPO
H090562	US 15-501/Sanford Road	Roberson Creek (Bridge No. 17) to NC 87 Widening to provide continuous turn lane, curb, gutter, bike lanes, and sidewalk	RPO
R-4754 H090302	NC 87	NC 902 to Alamance County line widening to 12 ft lanes & 4 ft paved shoulders	RPO
B150427	Hamlets Chapel/Jones Ferry Rd	Add Bicycle Lanes and Paved Shoulders	RPO
B150684	Chatham Ave	Construct sidewalk, including improvements at rail crossing	RPO
B150689	2nd Ave	Road diet with addition of crosswalks, sidewalks, bike lanes, median with refuge islands, curb extensions, and on-street parking	RPO
H150762	US 64	Construct interchange at US 64 and NC 751 in Chatham County	RPO