



STATE OF NORTH CAROLINA
DEPARTMENT OF TRANSPORTATION

ROY COOPER
GOVERNOR

JAMES H. TROGDON, III
SECRETARY

July 14, 2017

Chatham County

James G. Crawford, Chair
Chatham County Board of Commissioners
P. O. Box 1809
Pittsboro, NC 27312

**Subject: Addition - 0.168 mile Lindsay Burke Place in the Manns Crossing
Subdivision, Plat Book 2008, Page 150.**

Dear Sirs and Madame:

This is to request appropriate resolution for the addition of the above-mentioned street in the Manns Crossing Subdivision. Please find attached a street summary, plat, and a county map showing the location of these streets. This office has investigated the subject streets and found it to meet minimum requirements for addition.

If you would forward the resolution directly to this office, I will attach it with other necessary documents and forward it through proper channels for addition to the State System.

Yours truly,

DocuSigned by:

John Olinger

John Olinger P.E.

Division Construction Engineer

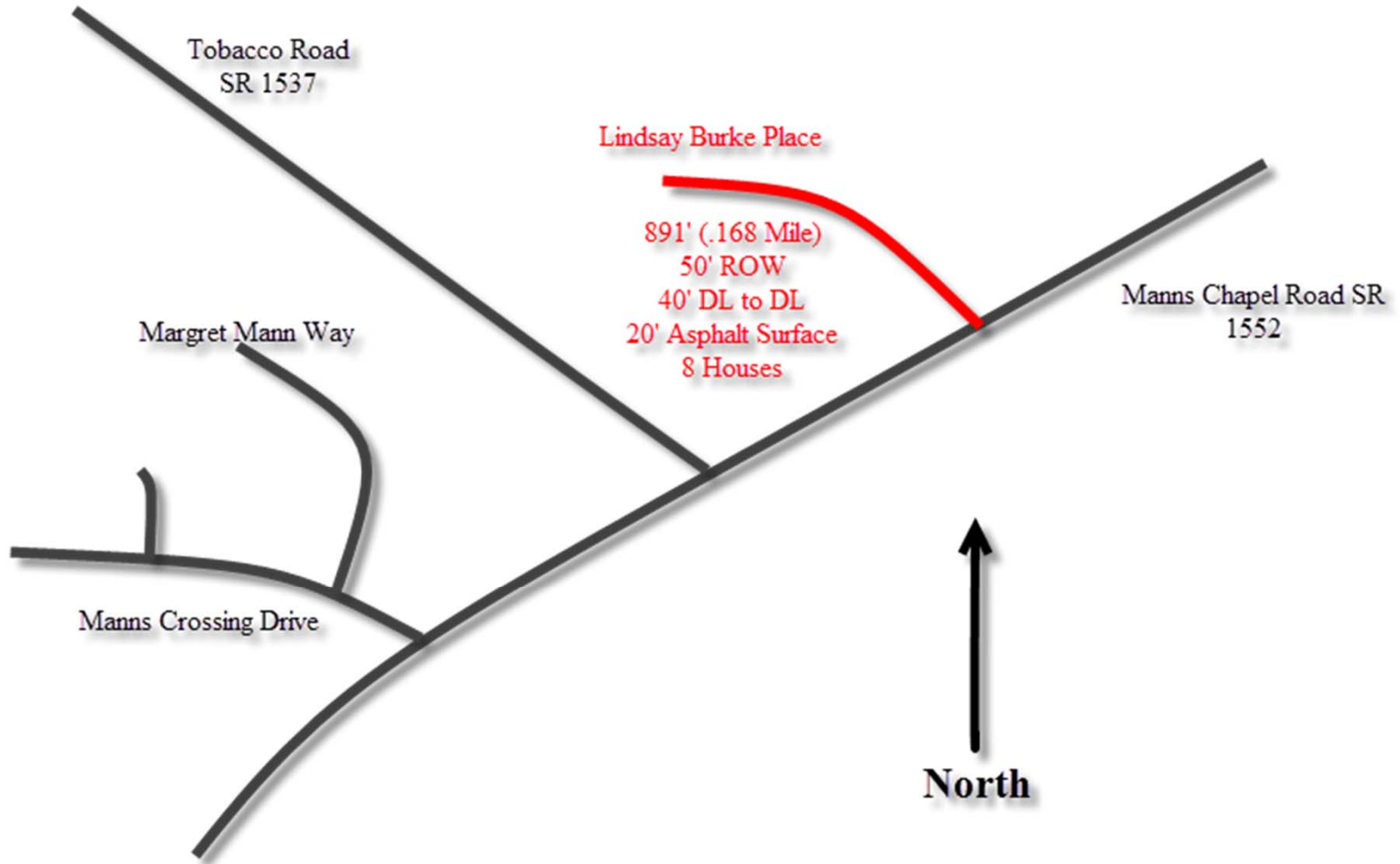
JRGO/jtr

Attachment

cc: Patrick Molamphy, Board Member
Brandon H. Jones, P.E., Division Engineer
Justin Bullock, P.E., Chatham County Maintenance Engineer
Lindsay Ray, Clerk to the Chatham County Board of Commissioners
File

Lindsay Burke Place

From the intersection of SR 1552 (Manns Chapel Road) to the center of cul-de-sac



Vicinity Map

