

moncurefire.com  
2389 Old US 1  
p.o. box 289  
moncure, nc 27559  
mvfd@moncurefire.com  
919-542-4191  
919-545-2839 fax

1 April 2024

Commissioners, County Manager and Staff,

I hope this finds you all well. I realize you are very busy doing the hard work of moving Chatham County forward, so I am very appreciative for the opportunity to appear before you during your meeting on April 15<sup>th</sup>. My hope is to take up as little of your valuable time as possible, so I will include some detailed notes here for you to review in advance.

#### My Request

Moncure Fire is hoping to build a fire training facility on the grounds of Station 8. I would like to humbly request your help in making that dream a reality by providing funding for this project out of the Moncure Coal Ash Fund.

#### Our Story

Moncure Fire is a non-profit with a contract to deliver fire, rescue and medical services in our 86 sq mile fire district. With very few public spaces in the area, Moncure Fire is the very heart of the community. Our firefighters are an eclectic group of people who reflect the diversity of our citizenry.

#### Our Funding

We are funded by a special fire tax, based on a percentage of the property values in our district. While we are expecting increased development in our area, it has been slow to arrive. We received our property valuations for 2024-25 yesterday. The budget will only rise \$1,800.00 in the coming year.

We get as creative as we can to bring the best incident response within our limited budget. We do this by thinking outside the box, being frugal where we can, purchasing the best equipment possible where it counts most, by applying for as many grants as possible, and by making requests like this one.

#### Identifying the Need

The first and most vital reason a facility is needed is to enhance our skill-set and to increase our effectiveness and efficiency on real-life emergency responses. This is accomplished by repeated hands-on training, which builds muscle memory to perform high-risk, low-frequency operations.

The second reason is that fire training is a key element of the NC Fire Department Rating System, sometimes referred to as ISO. A fire department's rating sets the property insurance rates of homeowners and businesses within the fire district. Further, training at an approved facility is

weighted much higher than other forms of training in the ISO rating schedule. It takes over 14 hours of classroom or station-based training to equal 1 hour of training at an approved facility.

#### Why Build it in Moncure?

Moncure has a strong vision and desire to build a training facility and is one of the few, if not the only department in Chatham County, with sufficient acreage to meet the OSFM facility requirements. Our station sits on 8.3 acres, which presents a unique opportunity to enable many different training scenarios. In addition to structure-based training, the size of our property will enable us to perform multi-departmental vehicle-based training in a safe, controlled environment, off the public roadway.

#### Benefiting Others

Our neighboring departments will be welcome to join us anytime we are training. As a matter of fact, to maximize their ISO score, each department must train at least twelve hours a year with each of their automatic-aid partners. A facility here would make that goal much easier to meet and benefit all local departments. In addition, Sheriff Roberson has indicated it could be used for SWAT training.

#### Type of Building.

I have been doing extensive research into these training facilities and have visited seven of them in person. I have concluded that a modular system, built from shipping containers, is by far the most cost-effective option. I have talked with NC OSFM and several out-of-state companies who manufacture these buildings and have determined that we can build a professionally engineered facility, using contractors from right here in Chatham, for a small fraction of the cost charged by the out-of-state companies. I assure you that this project has been thoroughly researched and planned – see preliminary drawings and photos of similar structures on the following pages.

#### Budget

As of today, I have met with the structural and civil engineers, as well as the contractors and have an educated guess as to the total for the project (excluding installing a hydrant) - \$600,000.00. I have been promised final engineered drawings for the site and building before the meeting on April 15<sup>th</sup>. Assuming that happens, I should be able to provide a more accurate budget when we meet in person.

In conclusion, I would like to thank you for your consideration. This would be a solid use for a portion of the remaining Moncure Coal Ash Fund and would directly benefit all of the citizens of Moncure. I am happy to answer any questions you may have.

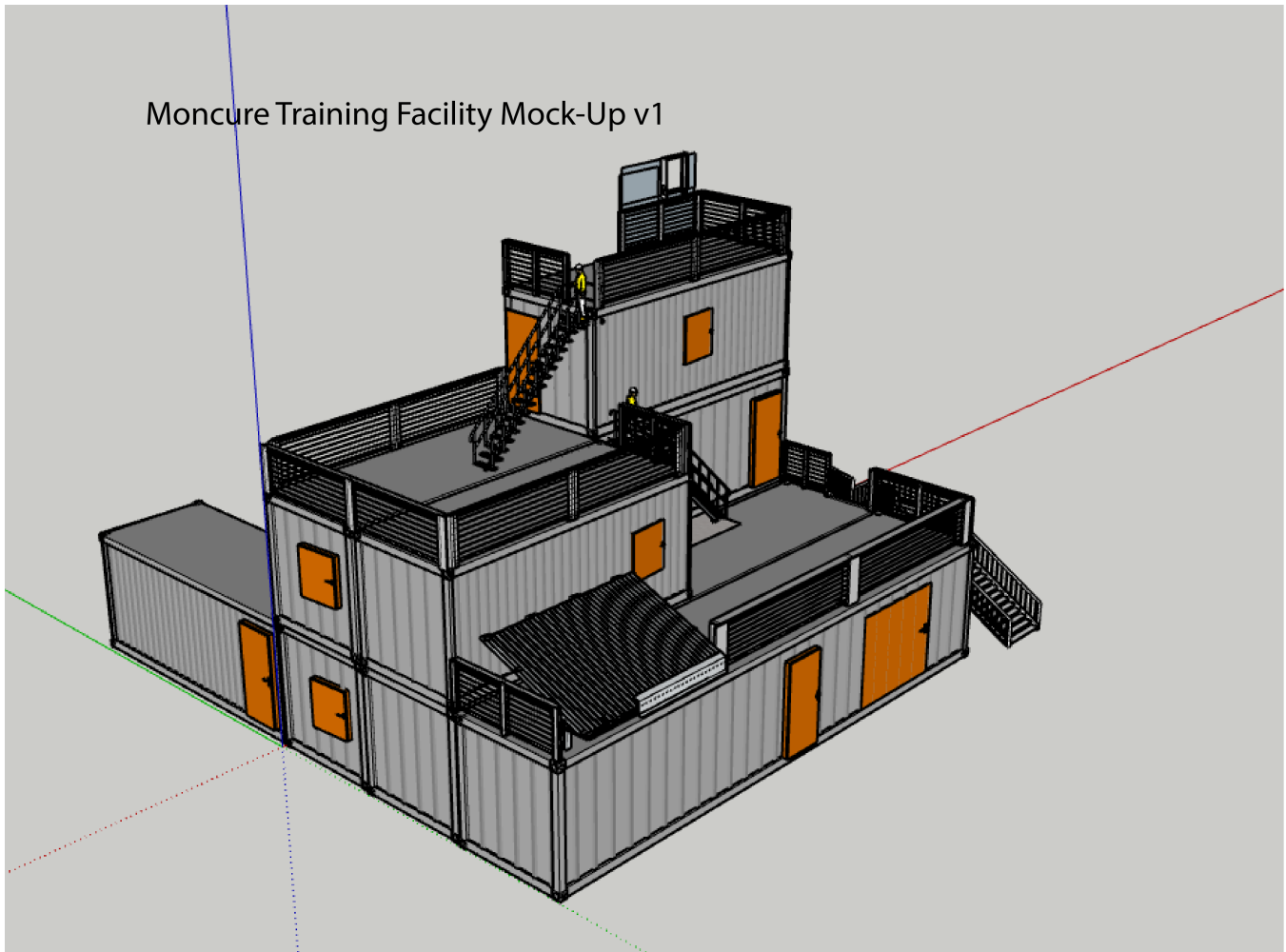
Sincerely,



Fire Chief Robert Shi  
robert.shi@moncurefire.com  
919-302-230

These buildings are available in all shapes and sizes. Large cities have units that are ten times the size of the one that I feel would fit our needs.

This is the facility I would like to build. Our structural engineer is currently working on plans based on this drawing that I created.



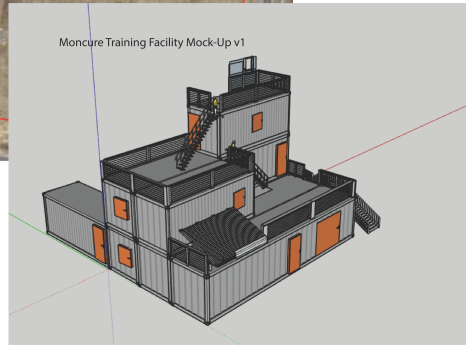
It has training props for forcible entry, removing fire victims, extrication of injured firefighters, ventilation, rope rescue, ladder operations, fire and low visibility operations and much, much more.

This is the rough sketch I made of the site plan. We have just completed the required topographical survey and our civil engineer is currently working on the professional site plan.



**Moncure Fire Training Facility**  
**Site Plan v3**  
 2389 Old US 1 Moncure, NC 27559  
 Chief Robert Shi  
 919-302-2302  
 robert.shi@moncurefire.com

- Approx. Proposed Cleared Area - 39849.61 sq' - grass where not noted we can curve the back cleared area, as shown in green.
- Training Structure - Constructed of 4, 40' Shipping Containers and 3, 20' Shipping Containers - footprint = 1120 sq'
- 10' Gravel Pad around structure
- 50'x35' Concrete pad in front of structure.
- 14' wide asphalt with bumpout to 28' at hydrant and flair to concrete pad
- — Hydrant and water line



This plan includes clearing the area outlined in green, adding an access road and a fire hydrant.

Following page - a couple of similar structures I have recently visited.



Foscoe FD



Wilksboro FD

