

Nonprofit Funding

FY26 and Beyond

What to Consider



Current County Process
Overview



United Way Bold Goal
Overview



Parallel or
Complementary Processes



Moving Forward

Current County Process

Overview of Nonprofit Application Process



United Way Bold Goal

Bold Goal Foundations

Community Engagement and Visioning

- Wealth gap
- Some will benefit from rapid economic development, while others will not.
- Lack of equity in access to resources that disproportionately affects minority populations.
- Recurring concerns of growing poverty.

United Way's Role in a Solution

- Serves as a convener.
- Provides direction on priorities and how partners collaborate.
- Fosters existing relationships and bring a diverse group of agencies together.
- Ensures that diversity, equity and inclusion are driving principles to building system change.

A BOLD NEW GOAL

For Chatham ● By Chatham ● With Chatham

**END AND PREVENT POVERTY FOR
2,000 PEOPLE IN 2,000 DAYS (2030).**

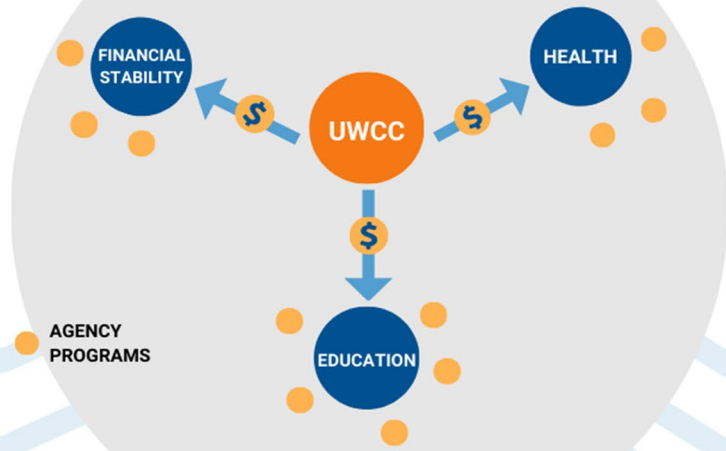
A BOLD New Goal

New United Way model focuses on collaboration and impact

HISTORIC UNITED WAY MODEL

Focused on Agency Support

Key Takeaway: Community Impact is Spread Out

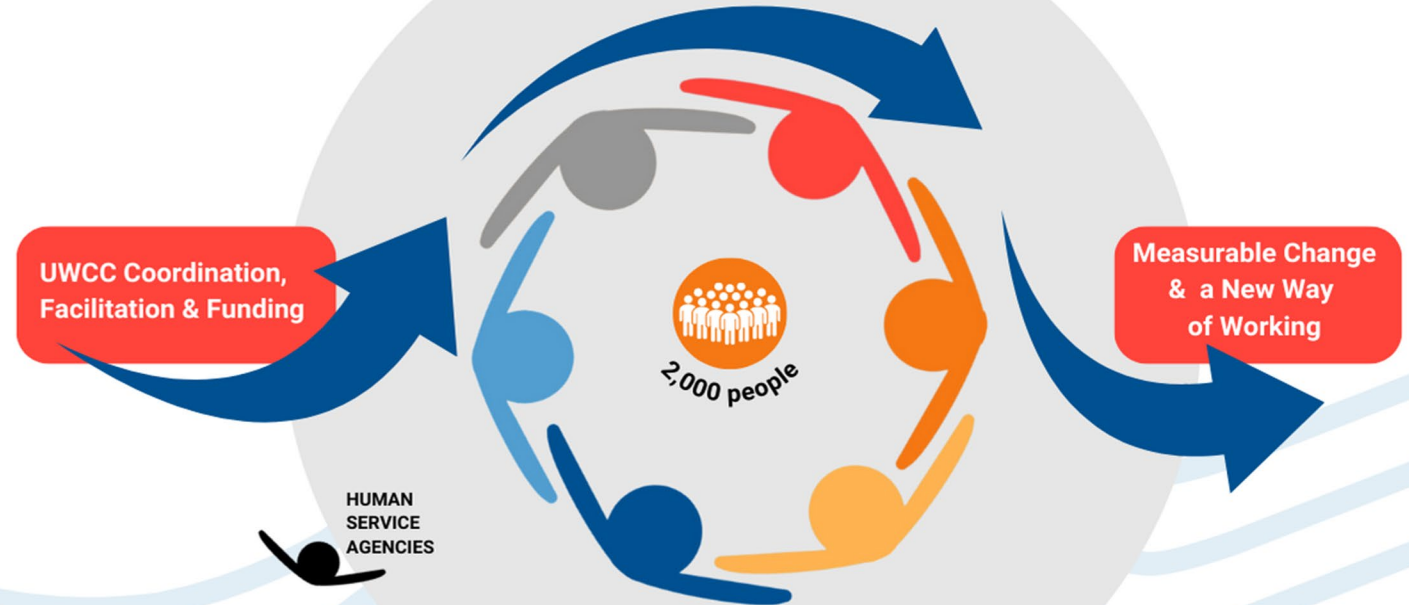


- United Way determines funding categories
- United Way sets the evaluation criteria
- Staff and volunteers evaluate individual programs in silos
- Agencies report on outcomes twice a year

NEW UNITED WAY IMPACT MODEL

Focused on Positively Impacting Clients

Key Takeaway: Community Impact is Focused & Collaborative

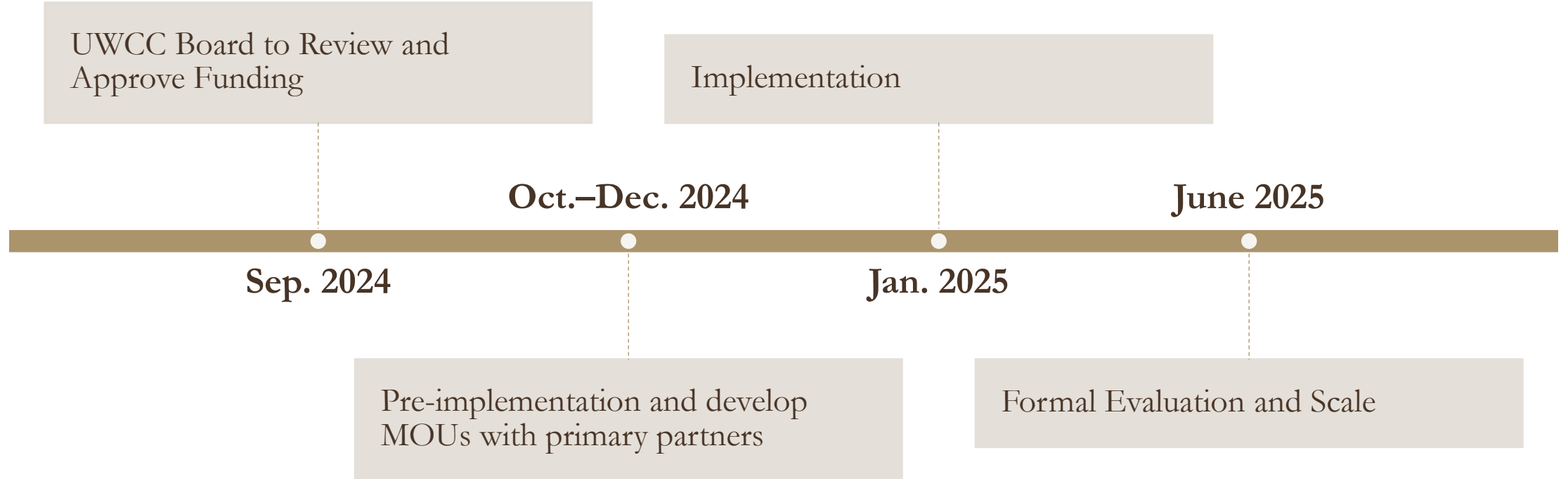


- United Way serves as a convener and facilitator for agency partners
- Agency partners collaborate to create a community funding plan
- Agency partners agree to evaluation criteria
- United Way collects agency outputs to show measurable community change

What's Next?

The United Way has dedicated \$100,000 to invest in the pilot program and will continue to lead the Bold Goal Project with community partners.

Impact Funding is the future funding model of United Way. As this project scales, additional partners will be added, capacity will be built, and funding will be allocated.



Parallel Process

Chatham County

- Opens in Feb-Mar
- 12/17 applying agencies in FY25 also applied to United Way
- Use Foundant to manage applications

United Way

- Opens in Mar-May
- 12/14 applying agencies in FY25 also applied to or funded by Chatham County
- Use Foundant to manage applications

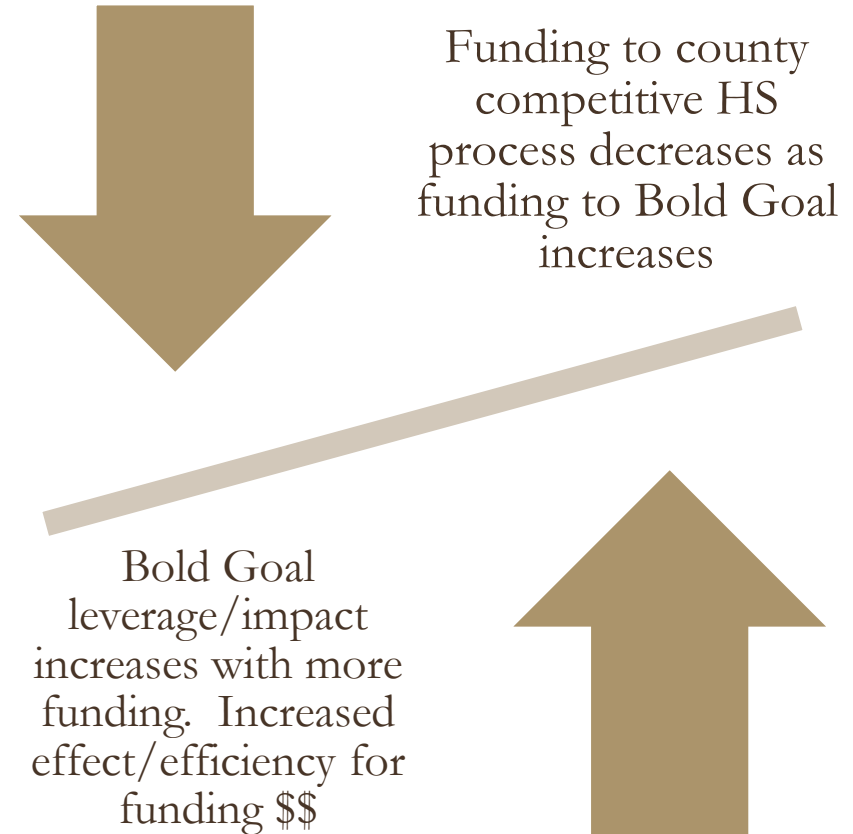
Integrated Processes

Fund the Bold Goal initiative at a high level.

Single process vs dual process frees up agency resources to be directed at community impact.

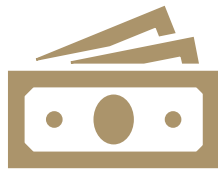
Transition some agencies with lengthy historical excellence and applicability to annual funding vs. competitive process.

Those annual funded agencies work directly with county department most closely aligned with their mission.



Moving Forward

- Integrating the dual processes is possible.
- Focus and expertise of a professional organization like United Way has real benefits.



Focused vs. Broad approach

Narrowly focusing on poverty with goal to eliminate it vs. casting funds in a broad pattern to mitigate poverty



Initial geographic focus narrow

To widen as the program becomes polished and sustainable



Single process

Easier for applying agencies

Questions?

Thank you!