

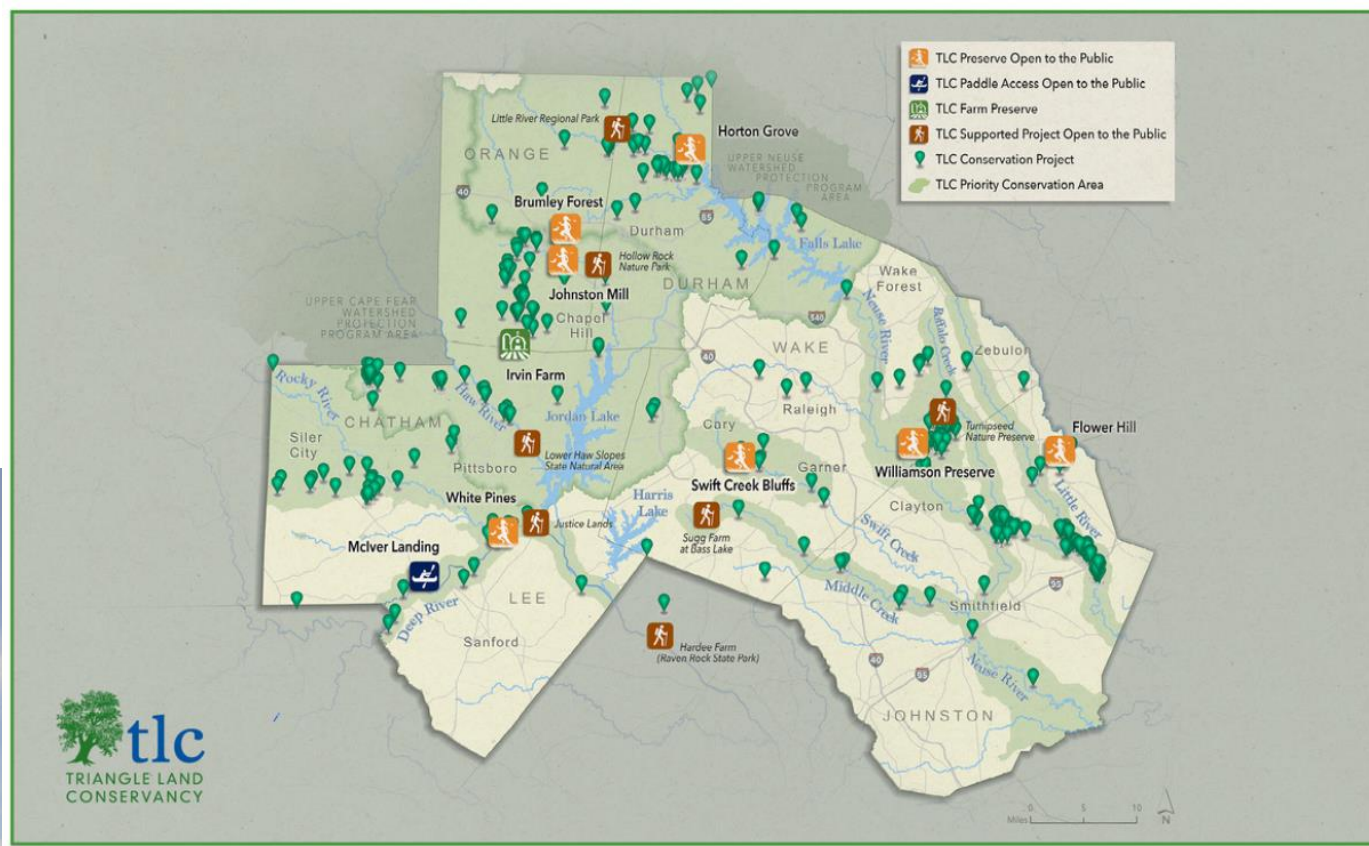
Chatham County Agricultural Preservation 2025 Project Update



Associate Director of Land Protection West,
Margaret Sands
Working Lands Manager,
Emma Childs



Preserving working lands for the future



8 public nature preserves (starting with White Pines) and OVER 25,000 acres conserved in the Triangle

TLC strives to create a healthier and more vibrant Triangle region by **safeguarding clean water, protecting natural habitats, supporting local farms and food, and connecting people with nature** through land protection and stewardship, catalyzing community action and collaboration.

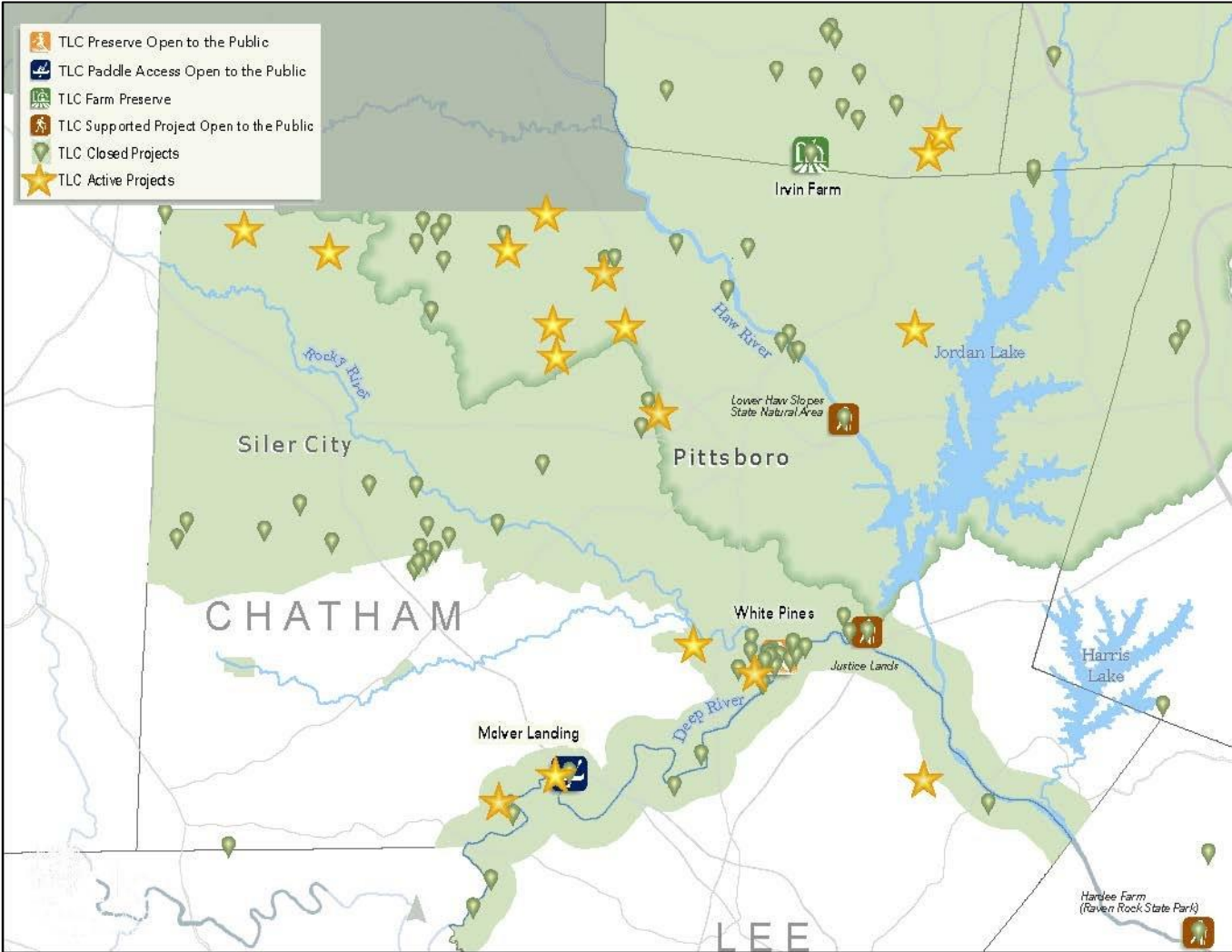
Supporting Local Farms and Food



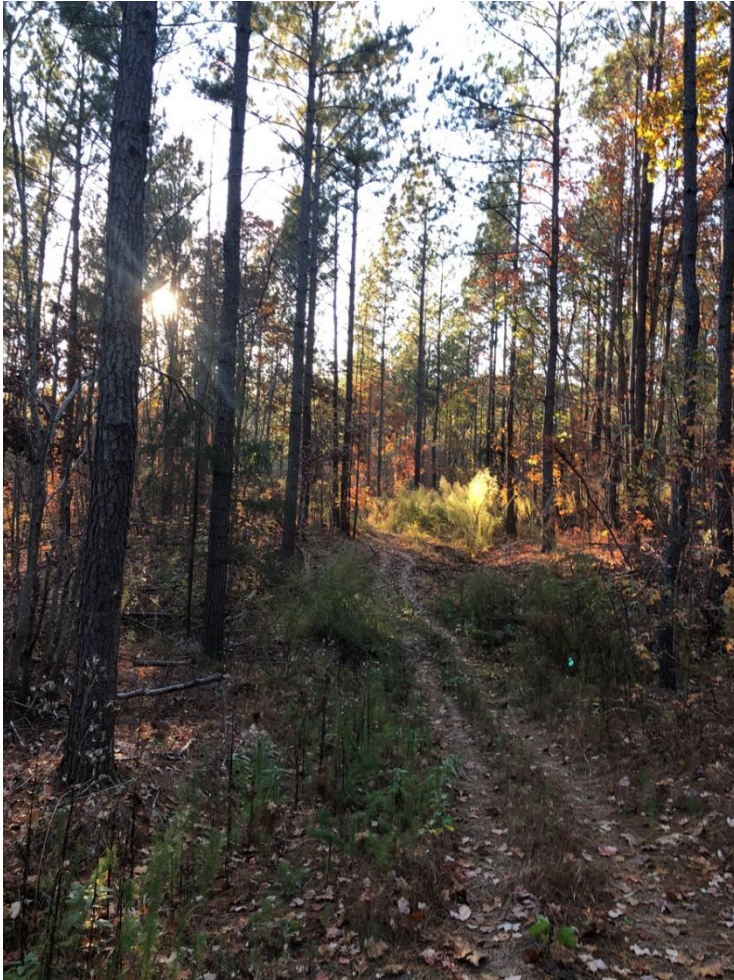
- TLC works with willing landowners to acquire **conservation easements** on working farms and forests
 - Voluntary legal agreement that limits uses inconsistent with agricultural production and conservation values
 - Landowners **still own** the land and can use, sell or pass land on to heirs
 - Conservation easements do **not** allow public access
- TLC typically acquires conservation easements using some combination of federal, state, and local dollars plus landowner donation (a “bargain sale”)
- TLC staff monitor conservation easements annually to ensure they are followed and continue landowner relationships



Active TLC Chatham Projects



Bolton Leight Forest

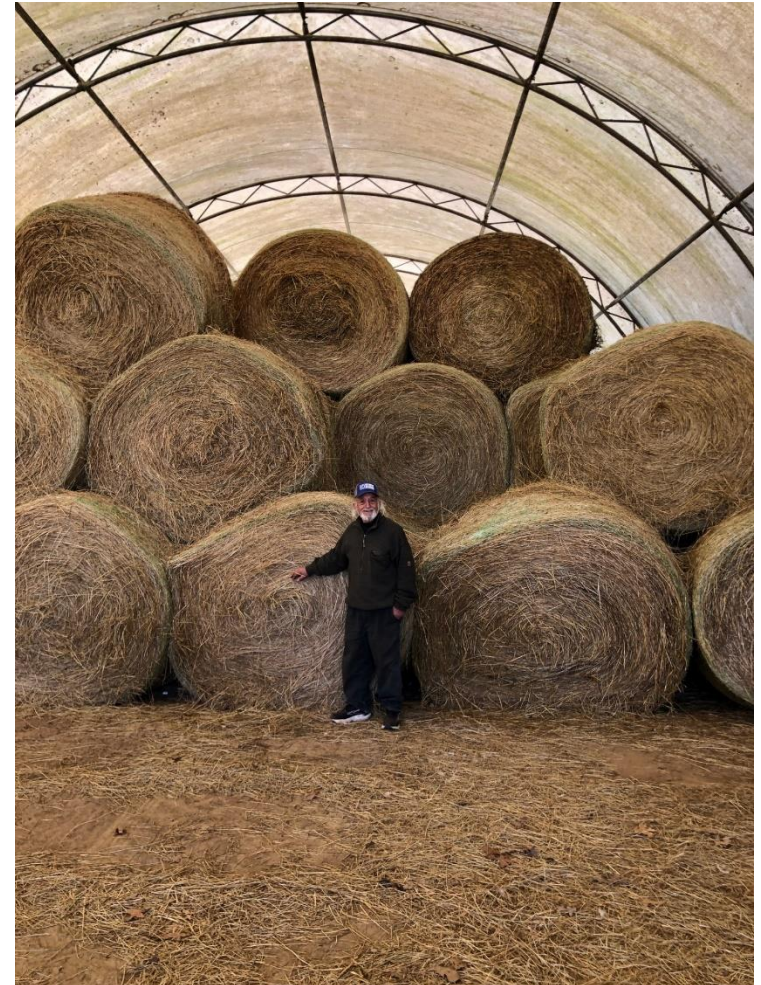


- Heavy bargain sale conservation easement near Shakori Hills to prevent further development
- 143-acre working forest with a Forest Management Plan, **closing 2025**
- NC Agricultural Development and Farmland Preservation Trust Fund (ADFP) funding
- Leveraging Chatham County Organizational Support funds for staff time to protect this property

Cohen Farm Phase II



- Murray and Esta Cohen, long-time Chatham Co. farmers with existing 102-acre TLC conservation easement
- 73 acres with a Forest Management Plan
- Produce certified organic hay
- Submitted to NC Agricultural Development and Farmland Preservation Trust Fund
- Leveraging Chatham County Organizational Support funds for staff time to protect this property



Loth Lorien Woods



- Donated conservation easement
- 28 forested acres, could have a Forest Stewardship Plan
- Important riparian area and beaver habitat, contributes to water quality of Terrells Creek and the Haw River
- Leveraging Chatham County Organizational Support funds for staff time to protect this property

Willow Oak Farm



- Donated working lands conservation easement located in the Rocky River Corridor near Lower Bear Creek Slopes Registered Heritage Area
- 80 acres of pasture and forestland
- Leveraging Chatham County Organizational Support funds for staff time to protect this property



Mitchells Chapel Forest



- 165-acre working forest with funding from NCADFP, **expected to close 2025**
- Contributes to nearly 600 acres of protected land north of US-64
- Leveraging Chatham County Organizational Support funds for staff time to protect this property

Chatham Project Timeline



Easement in process:
Funding Secured



Closing anticipated 2025

Mitchells Chapel Forest:
Environmental assessment mid-April 2025

Willow Oak Farm:
Completed environmental assessment 2025

Bolton Leight Forest:
Closing shortly!

Loth Lorien Woods:
Survey mid-April 2025

Cohen II:
Applied to NCADFP

Phillippie Farm:
Applied to NCADFP

Chathamance Farm:
Applied to NCADFP

Stensvad Farm:
Seeking transaction costs

Actively seeking funding





Thank
You!

Margaret Sands – Associate Director of
Land Protection, West
msands@triangleland.org

Emma Childs – Working Lands Manager
echilds@triangleland.org

www.triangleland.org