

RECREATION
ADVISORY COMMITTEE
ANNUAL SUMMARY
REPORT – FY25

Chatham County Parks,
Recreation & Cultural
Resources



RECREATION ADVISORY COMMITTEE

Committee Members

- Kent Barlow: Vice Chair
- James Fogelman
- Andrew George
- Megan Lynch
- Guadalupe Perez: Chairperson
- Scott Perry
- Tammy Phillips
- William Sparrow
- Gail Elder White

MISSIONS & GOALS

Mission

To advise and support staff with creation of policies, programs, and facilities.

Goals

To have adequate funding to increase the variety and quantity of recreational programming and facilities to meet the needs of growing population.

To protect recreational access to natural resources through acquisition, improvement, and sustainable management.

To ensure that current/future development is sensitive to the environment and enhances parks/recreation opportunities for everyone.

Objectives

To fund the protection of natural resources and implementation of the Master Plan recommendations.

BARRIERS & CHALLENGES

Barriers/Challenges that make it difficult for the committee to achieve goals or objective

- Lack of adequate funding for land acquisitions, park development and renovation, and conservation
- The pressure of growth
- Lack of measurable metrics for conservation of natural resources
- Lack of adequate facilities to serve county residents equally

Recommended Changes

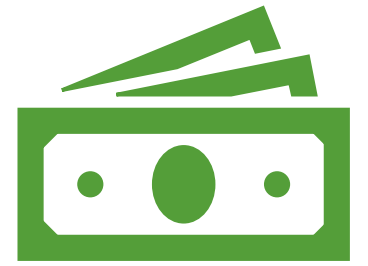
- Incorporate policy to require trail easements with developers for trail corridors

RECREATION ADVISORY COMMITTEE

Accomplishments & Participation

- Parker's Ridge Park Site Visit
- NC State Park Ribbon Cutting
- Deep River State Park (Justice Tract)
- Letters of Support for Grant Applications
- Johnson Heirs Property Site Visit





RECOMMENDED FUNDS FOR FY25 GRANTS TO ORGANIZATIONS

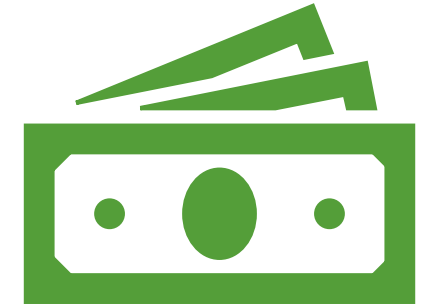
Pittsboro Skatepark
\$12,750

Concrete Skatepark Construction Project in the Town of Pittsboro

Sprott Youth Center
\$7,550

Open Gym Attendants and Gymnasium Improvements

FY25 GRANTS TO TOWNS



Town of Siler City
\$38,525

Improvements at Washington Park & Ramsey Park

Town of Pittsboro
\$24,855

Relocation of Dog Park at Knight's Farm Park and
Improvements

Town of Goldston
\$1,200

Playground Gravel and Improvements

CHATHAM COUNTY PARKS, RECREATION & CULTURAL RESOURCES - HIGHLIGHTS

ARTS PROGRAMMING

48 Classes Offered

195 Participants



CULTURAL ARTS PROGRAMMING

Dia De Los Muertos
Bee Painting with a Beekeeper



SPECIALIZED ARTS PROGRAMMING

Mosaic Birdhouse and Peace Painting

CHATHAM COUNTY PARKS, RECREATION & CULTURAL RESOURCES - HIGHLIGHTS

Community Center and New Offerings



Community Center

- Open Gyms
- Tap Classes
- Chair yoga



New Programs

- Little Virtuosos Music Program
- Snapology STEM & STEAM classes
- Homemade crochet: Beginner
- Eco-printing
- Fabric tucking
- Family Day Camp



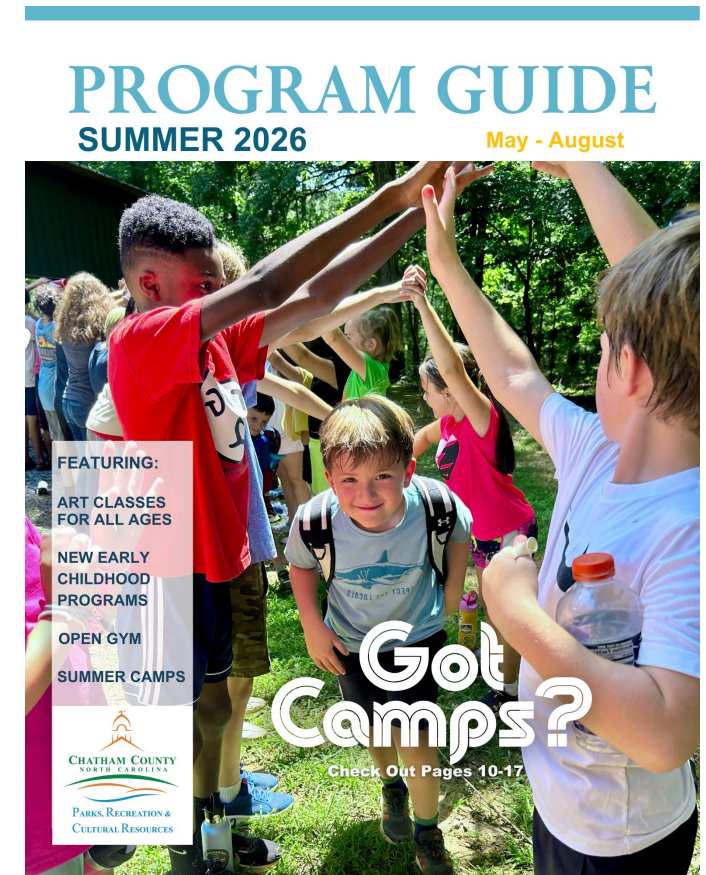
CHATHAM COUNTY PARKS, RECREATION & CULTURAL RESOURCES - HIGHLIGHTS

Ease of Access to Information

- Newly Re-designed Website
- Program Guide Digital Flipbook



WWW.CHATHAMCOUNTYNC.GOV/PARKS-REC



CHATHAM COUNTY PARKS, RECREATION & CULTURAL RESOURCES - HIGHLIGHTS

Athletics

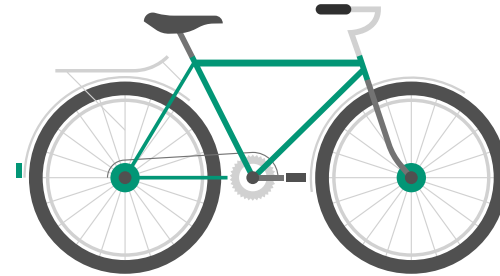
- Youth Basketball
- Tee-Ball
- Track and Field
- Older Adult Guided Hikes
- Volleyball League
- Archery Clinics



CHATHAM COUNTY PARKS, RECREATION & CULTURAL RESOURCES - HIGHLIGHTS

Special Events

- Chatham County Challenge
- Trunk or Treat Fall Festival
- Holiday in the Park
- Community Pool Day



CHATHAM COUNTY PARKS, RECREATION & CULTURAL RESOURCES - HIGHLIGHTS

Partnerships & Collaborations

- Chatham Moves Trailer
- Chatham County Public Libraries
- Aging Services
- Safe Kids, CPRC Safe Route & Planning Department via a Grant



CHATHAM COUNTY PARKS, RECREATION & CULTURAL RESOURCES - HIGHLIGHTS

Parks & Facilities

Welcome



CHATHAM COUNTY PARKS, RECREATION & CULTURAL RESOURCES - HIGHLIGHTS

Parks & Facilities - Projects



CHATHAM COUNTY PARKS, RECREATION & CULTURAL RESOURCES - HIGHLIGHTS

Parks & Facilities - Projects

- George Pauly Nature Trail at Northeast Park
Opening early summer!
- Pokeberry Tributary Trail at The Park at Briar Chapel

