



PAT McCRORY
Governor

NICHOLAS J. TENNYSON
Secretary

August 10, 2016

Chatham County

Mr. Jim Crawford, Chair
Chatham County Board of Commissioners
P.O. Box 1809
Pittsboro, NC 27312

Subject: Road Maintenance Addition – Briar Chapel Subdivision (see attached documents for road names).

Dear Sirs & Madams:

This is to request appropriate resolution for the addition of the streets as listed on the attached documents. Please find attached a street summary, plat, and a county map showing the location of these streets. This office has investigated the subject street and found it to meet minimum requirements for addition.

If you would forward the resolution directly to this office, I will attach it with other necessary documents and forward it through proper channels for addition to the State System.

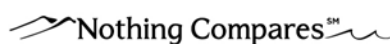
Sincerely,
Digitally signed by:

A handwritten signature in black ink that reads "Marty C. Tillman".

E72EF75317784CB...
Marty C. Tillman
District Engineer

CC:

Brandon Jones P.E; Division Engineer
Justin Bullock P.E; Chatham County Maintenance Engineer
File



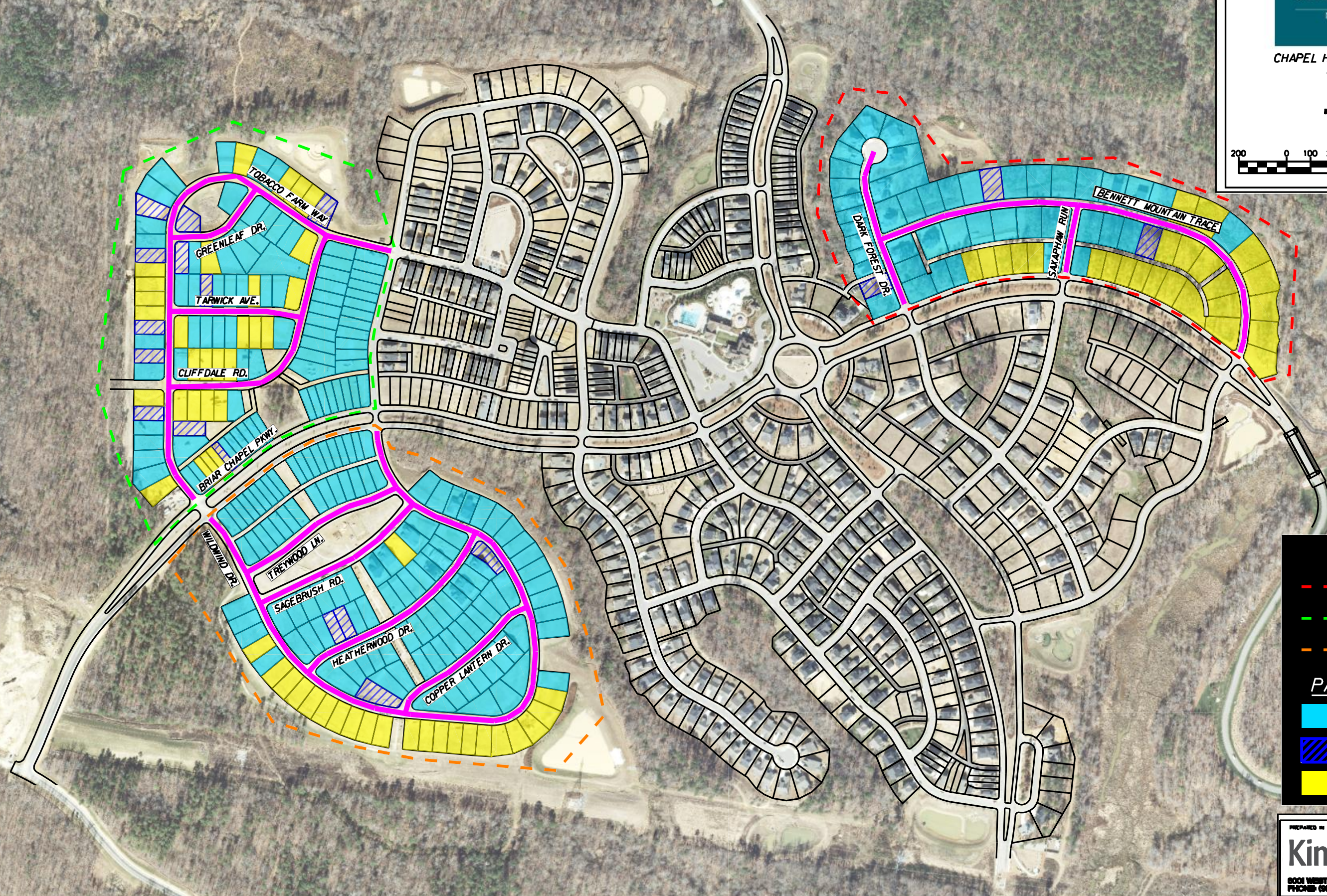
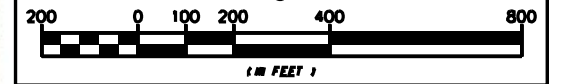
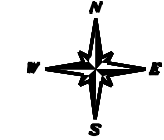
Road Name	Start	End	Length	Divided Section (Y/ N)	Pavement Width	ROW Width	Ditch to Ditch	# of Occupied Homes (SR-1 Form)
Bennett Mountain Trace	Dark Forest Drive	Briar Chapel Parkway	1970	N	22'	40'	27' BC to BC	22
Saxaphaw Run	Briar Chapel Parkway	Bennett Mountain Trace	310	N	22'	40'	27' BC to BC	0
Dark Forest Drive	Briar Chapel Parkway	Sta. 31+74.16	695	N	22'	40'	27' BC to BC	18
Tobacco Farm Way	Briar Chapel Parkway	N. Serenity Hill Circle	2300	N	22'	40'	27' BC to BC	17
Greenleaf Drive	Tobacco Farm Way	Tobacco Farm Way	445	N	22'	40'	27' BC to BC	5
Tarwick Avenue	Tobacco Farm Way	Cliffdale Road	550	N	22'	40'	27' BC to BC	12
Cliffdale Road	Tobacco Farm Way	Tobacco Farm Way	1085	N	22'	40'	27' BC to BC	15
Wildwind Drive	Briar Chapel Parkway	Briar Chapel Parkway	3310	N	22'	40'	27' BC to BC	22
Treywood Lane	Wildwind Drive	Wildwind Drive	735	N	22'	40'	27' BC to BC	14
Sagebrush Road	Wildwind Drive	Wildwind Drive	775	N	22'	40'	27' BC to BC	10
Heatherwood Drive	Wildwind Drive	Wildwind Drive	935	N	22'	40'	27' BC to BC	27
Copper Lantern Drive	Wildwind Drive	Wildwind Drive	640	N	22'	40'	27' BC to BC	20

^See Attached Map *

BRIAR CHAPEL: STREET ACCEPTANCE REQUEST AND HOME OCCUPANCY STATUS



CHAPEL HILL, NORTH CAROLINA
MARCH, 2016



LEGEND

- - - PHASE 4 (MCADAMS)
- - - PHASE 6N (MCADAMS)
- - - PHASE 6S (MCKIM & CREED)

PARCEL STATUS

- OCCUPIED
- CONSTRUCTION COMPLETED
- OTHER

PREPARED IN THE OFFICE OF:
Kimley»Horn
8001 WESTON PARKWAY - CARY, NC 27513
PHONE: (919) 677-8000 FAX NO. 919-677-8008

