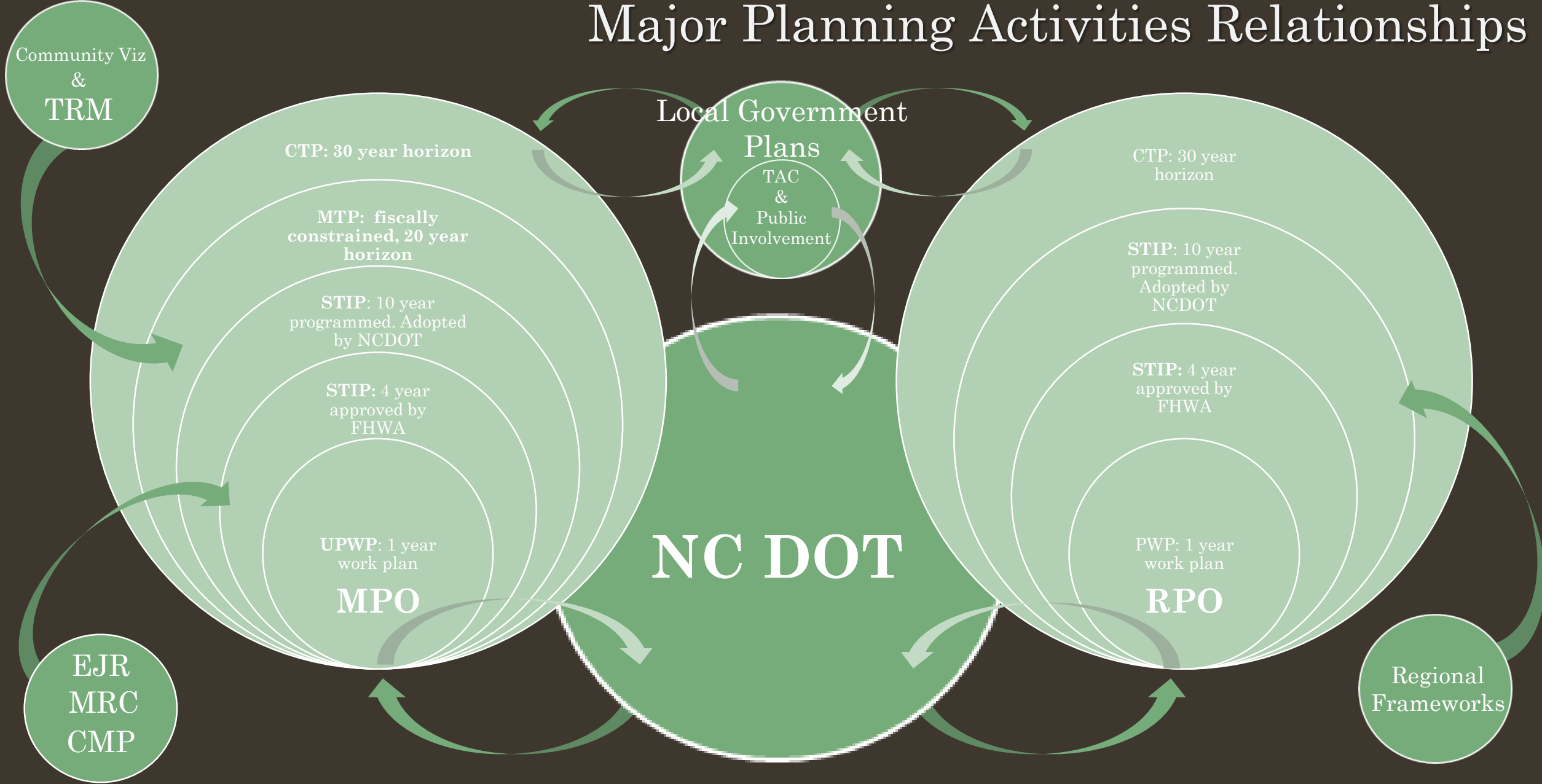


# Transportation Update

Chatham County

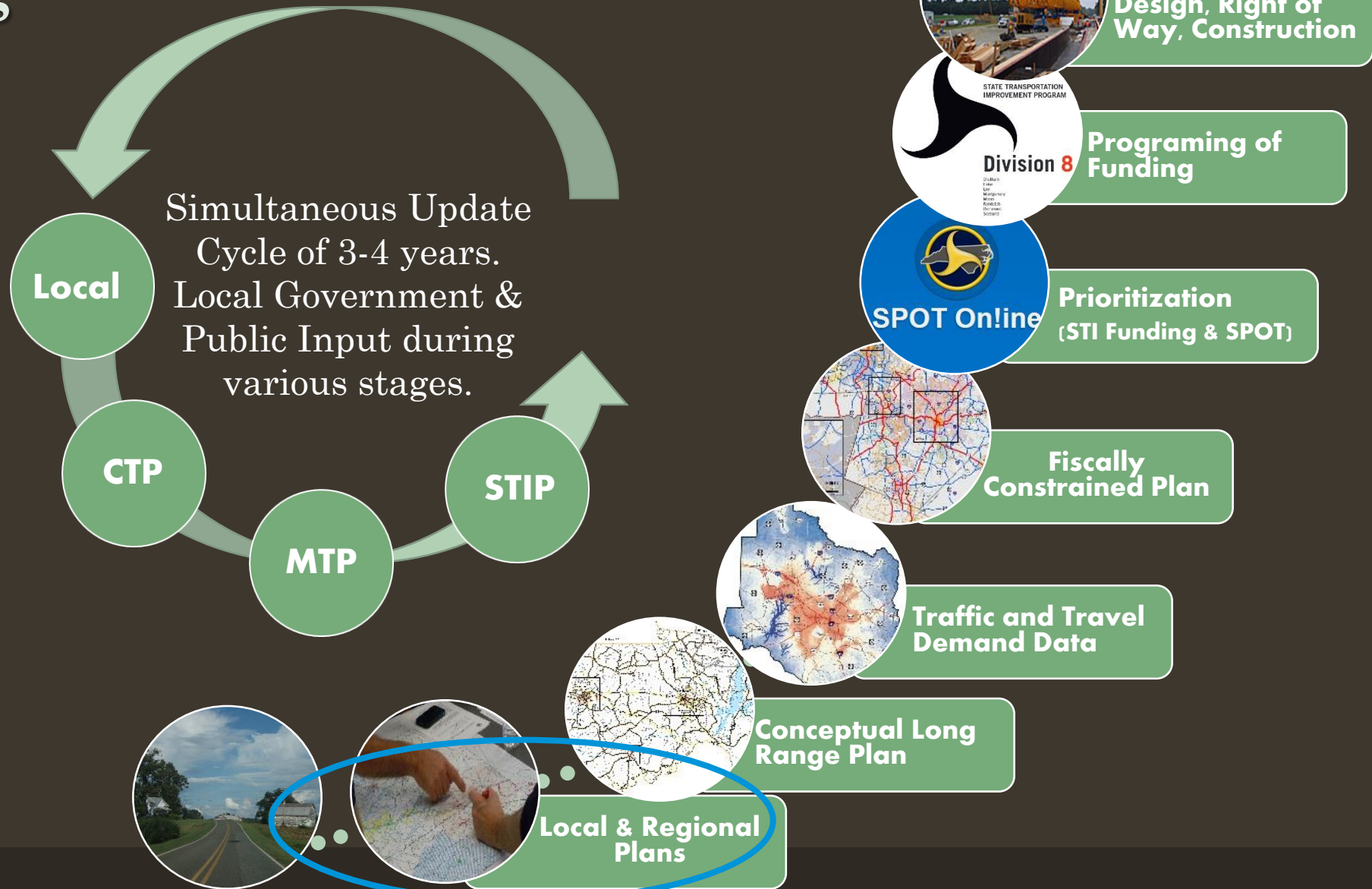


# Major Planning Activities Relationships





# Transportation Planning Process



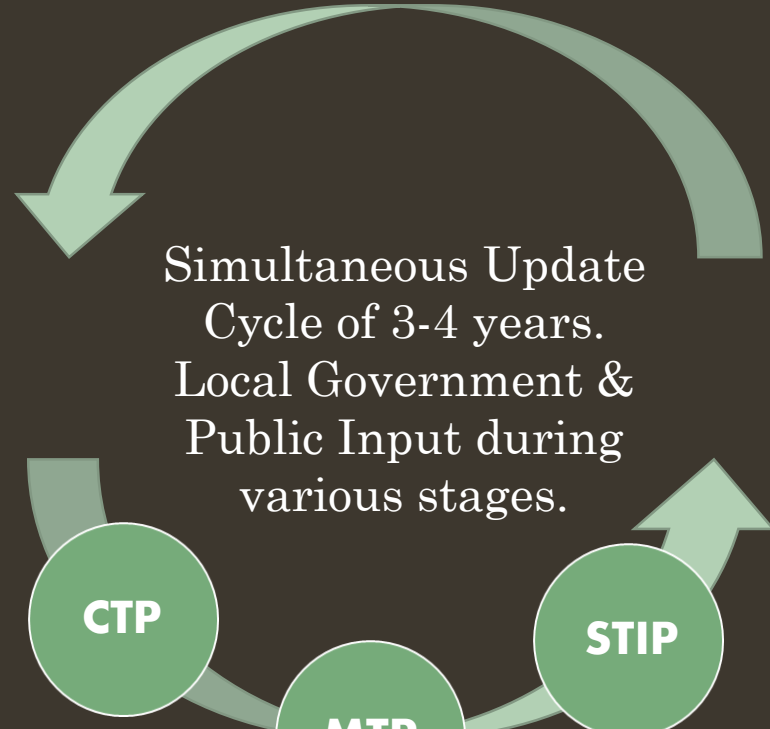
# MPO Bicycle Signage Study

- Study scheduled for completion early June 2016
- Analysis and Recommendations for Rural cyclist safety in Chatham County
- Assessment of Mountains to Sea, State Routes, and Recreational Loops with ATT crossings data collection





# Transportation Planning Process



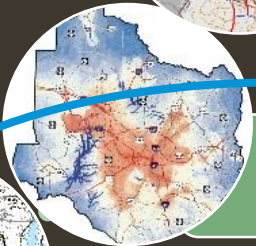
Simultaneous Update Cycle of 3-4 years. Local Government & Public Input during various stages.



Local Plans



Conceptual Long Range Plan



Traffic and Travel Demand Data



Fiscally Constrained Plan



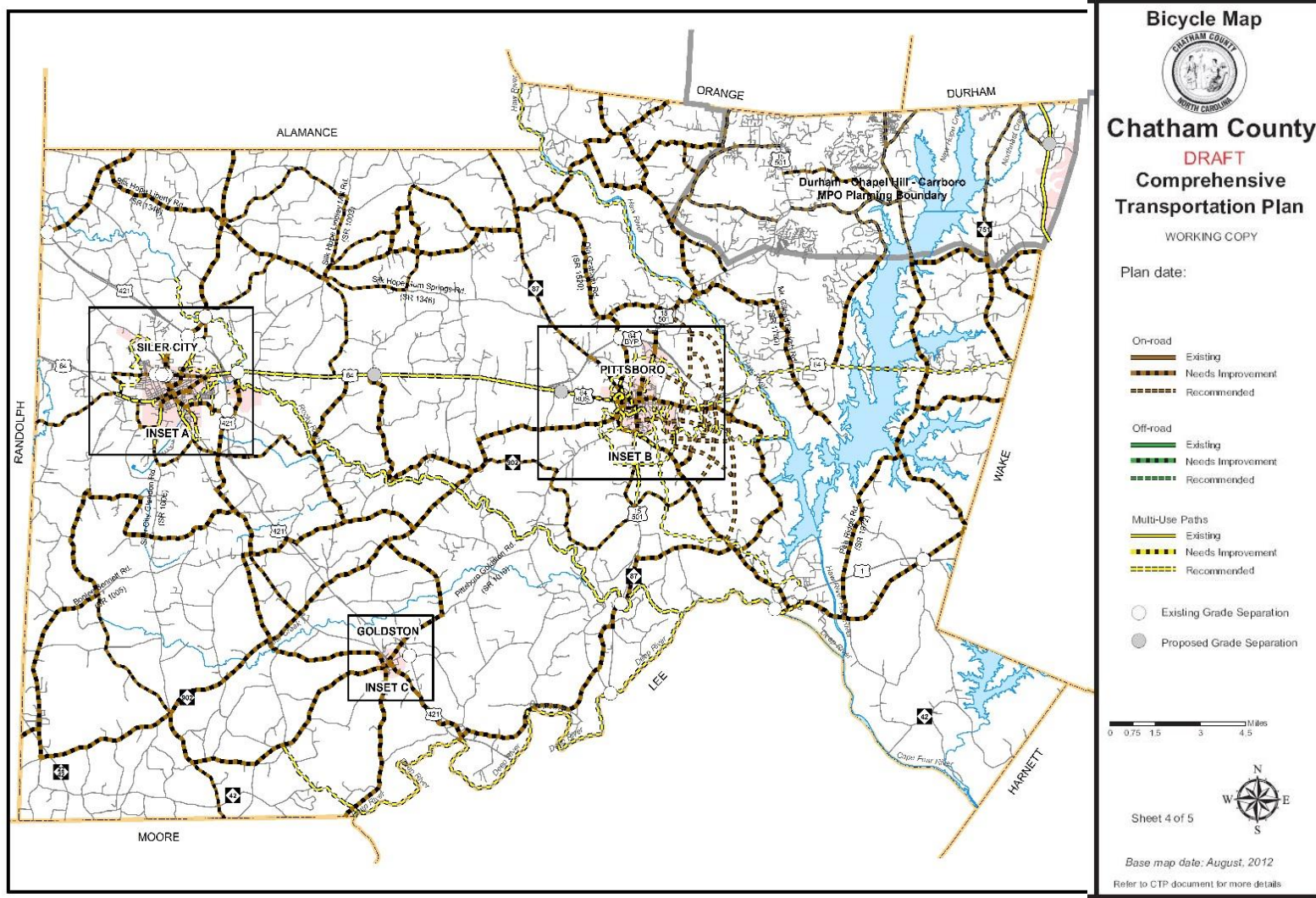
Prioritization (STI Funding & SPOT)



Programing of Funding



Design, Right of Way, Construction



# County CTP

TAC review on April 7<sup>th</sup>

Summer Public Input meetings

# MPO CTP

Set to be before the board in August

Released for Public Comment and scheduled to be adopted Fall 2016

# MPO MTP

Public Input period for Draft Goals and Objectives

Scheduled to be adopted June 2017.

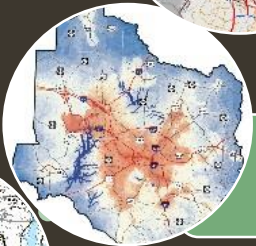
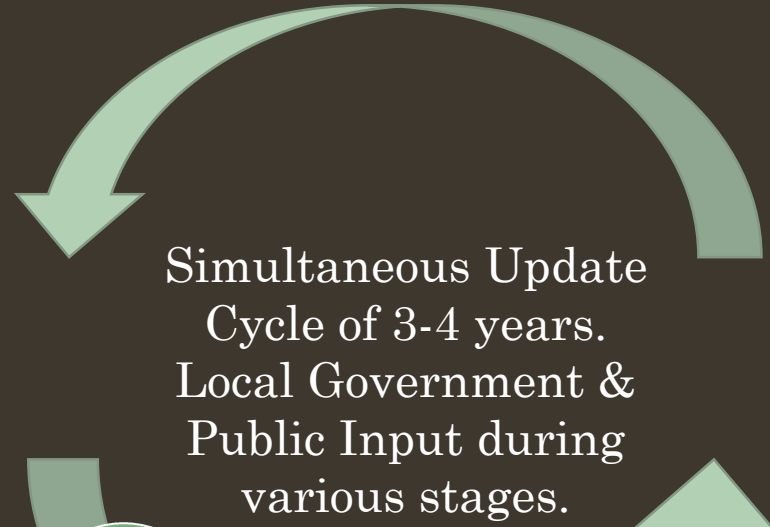




*Board Action: Approve TAC recommendation to move foreword to CTP adoption without Pittsboro*



# Transportation Planning Process



Local Plans

Conceptual Long Range Plan

Traffic and Travel Demand Data

Fiscally Constrained Plan

SPOT Online  
Prioritization (STI Funding & SPOT)

Division 8  
Programming of Funding

Design, Right of Way, Construction



# Prioritization Process

- STI Funding Legislation
- Projects Prioritized by local jurisdictions to be submitted.
- Data Input by DOT Division 8, RPO, and MPO into Online tool to obtain raw score. Then, Local Input points assigned to receive preference.
- Best projects scores from across state will be programmed into the next STIP and funding will be committed. Then scheduled for Environmental Impact, Preliminary Engineering, Right of Way, Construction, and Utilities.

Step 1 Submit Projects

Step 2 SPOT Scores Projects

Step 3 Rank & Assign Local Input Points

Step 4 Resubmit to be chosen for programming

# Committed Projects in the 2016-2025 STIP

Project Number	Project Name	Description	Preliminary Engineering	Right of Way	Utilities	Construction
R-5724	US 15-501/Hillsboro Street	Widening to Provide Continuous Turn Lane, Curb, Gutter, Bike Lanes, and Sidewalks		FY 2019	FY 2019	FY 2020
U-5737	US-64/E 11th St	Improve roadway by adding median for access control, with sidewalks, crosswalks, bike lanes and/or multi-use sidepath as recommended in Bike & Ped plans		FY 2019	FY 2019	FY 2020
B-5747	R. Jordan Rd	R. Jordan Rd, replace Bridge #180157 over Cedar Creek.		FY 2017		FY 2017
EB-5734	E. Raleigh St	E. Raleigh Street from South 6th Ave to US 64 East 11th St in Siler City. Construct sidewalk on South side from South 6th Ave to South 10th Ave and construct multiuse path on south side from south 10th Ave to US 64 (E. 11th St).		FY 2018		FY 2020
EB-5738	Mt. Carmel Church Rd	Construct Bicycle lanes along Mt. Carmel Church Rd from Old Farrington Point Rd to the Orange County Line.	FY 2016			FY 2017
EB-5739	Manns Chapel Rd	Construct Bicycle lanes along Manns Chapel Rd from US 15-501 to Poythress Rd	FY 2016			FY 2017
AV-5736	Siler City Municipal Airport	Acquisition of approximately 17 acres of avigation easement in the Runway 22 approach. Project also includes select tree removal in the easement to remove obstructions to the approach. Acquisition of approximately 15 acres of avigation easement in the Runway 4 approach. (includes Project Request Numbers: 3125/3126 )		FY 2016		



# Prioritization Process

- Upon Receiving scores, the Local Input Point Allocation process begins.
- TARPO: Local government by county ranks priority projects for Regional Impact and Division Needs projects based on scores to be considered for local input points given by TARPO (2 minimum per county). Public Hearing and Board Approval follow.
- MPO: Rank projects in April/May and July/August with Public workshop to follow in Aug/Sept. Approval of local input points scheduled for MPO Board meetings May 11<sup>th</sup> for Regional Impact and August 10<sup>th</sup> Division Needs Category.

Step 1 Submit Projects

Step 2 SPOT Scores Projects

Step 3 Rank & Assign Local Input Points

Step 4 Resubmit to be chosen for programming

# P4 Projects & Scores: **Resubmitted** & Revaluated considered for 2018-2027 STIP

Project Number	Project Name	Description	Agency	Regional Impact	Division Needs
H090555-A	NC 751	Widen NC 751 to multilane (4 lanes with Bicycle lanes) from US 64 to O'Kelly Chapel Rd	MPO		
H140377	US 64 /W 11th St	Add median/sidewalk/bike lanes from Greensboro Ave to Glenn Ave in Siler City	RPO		
H090568	Pittsboro-Moncure Rd	Modernize Roadway (widen lanes to standard 12 ft lane widths), including paved shoulders	RPO		
B140577	E 3rd St	Construct sidewalk on south side of E 3rd St	RPO		
A130469	Siler City Municipal Airport	500' extension of Runway 22 and the parallel taxiway. Project also includes relocation of Airport Road (approximately 1,700 LF) to accommodate the runway extension and acquisition of approximately 2 acres of land to relocate Airport Road. (Includes Project Request Numbers: 3137).	RPO		
R140018	CSX S line	New Automotive Terminal. Construction of a approximately 40 acre facility to handle 60 railcars and 2,000 vehicles. Facility will serve the Raleigh-Durham, Winston-Salem and Wilmington areas	DIV		
H090562	US 15-501/Sanford Road	Roberson Creek (Bridge No. 17)	RPO		
R-4754	NC 87	NC 902	RPO		
B150427	Hamlets Chapel/Jones Ferry Rd	Add Bicycle Lanes and Paved Shoulders	RPO		



# P4 Projects & Scores: **NEW** submittals considered for 2018-2027 STIP

Project Number	Project Name	Description	Agency	Regional Impact	Division Needs
H150227	O'Kelly Chapel Rd	Intersection improvements at NC 751 & O'Kelly Chapel Rd. Add turn lanes, improve truck turn radius, and realign skewed intersection.	MPO		
H150762	US 64	Construct interchange at US 64 and NC 751 in Chatham County	RPO		
B150147	Pittard Sears Rd	Construct sidewalk along western side of Pittard Sears Rd between O'Kelly Chapel Rd and Trailhead.	MPO (Cary)		
B150150	O'Kelly Chapel Rd	Construct 10' wide streetside trail along O'Kelly Chapel Rd between existing trail at Green Level Church Rd and American Tobacco Trail.	MPO (Cary)		
B150573	American Tobacco Trail	Construct pedestrian and bicycle crossing (tunnel) at ATT crossing of O'Kelly Chapel Road.	DIV		
B150436	3rd St, 2nd St, SR 1006 Raleigh St, Beaver St	Add ADA-compliant crosswalks & curb extensions at (1) Chatham Ave & 3rd St; (2) Chatham Ave & 2nd St; (3) Chatham Ave & Beaver St; (4) Birch Ave & 2nd St; (5) Birch Ave & Raleigh St; and add ADA-compliant at-grade rail crossings on 3rd St, 2nd St, and Raleigh St	RPO		
B150684	Chatham Ave	Construct sidewalk, including improvements at rail crossing	RPO		
B150689	2nd Ave	Road diet with addition of crosswalks, sidewalks, bike lanes, median with refuge islands, curb extensions, and on-street parking	RPO		
B142265	Farrington Point Rd/Farrington Mill Road	Construct Bicycle lanes along Farrington Point Road/ from the Durham County Line to Lystra Road	MPO		

# Ranking Methodology

1. Will preliminarily rank projects based on the raw scores received through SPOT. (highest scores = highest rank)
2. Will consider the following factors after preliminary rank:
  - Network Functionality
  - Timeline of Improvement/Impact on Existing Network
  - Geographic Balance

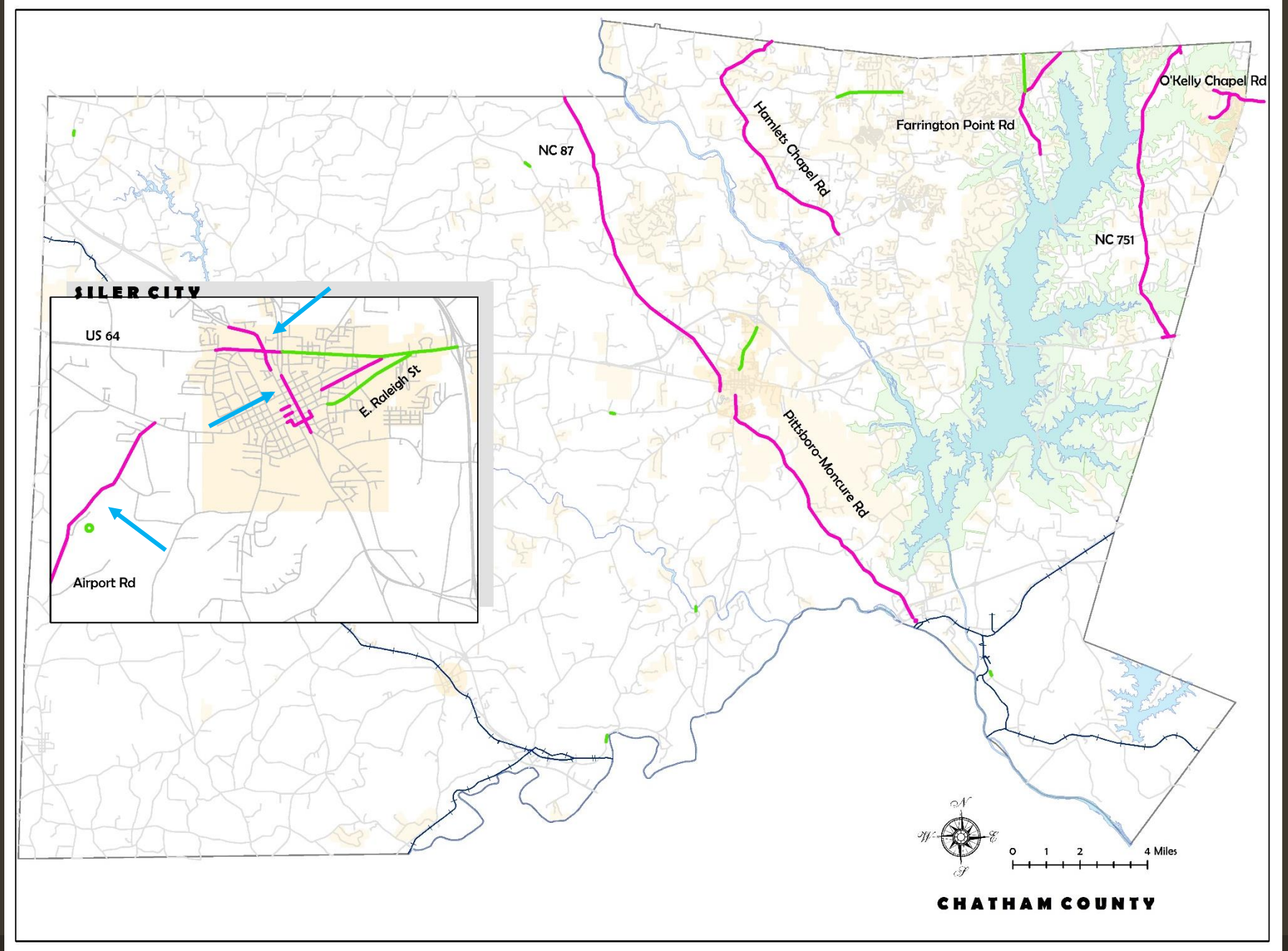
Methodology of staff ranking reviewed, approved, and recommended by TAC on April 7<sup>th</sup>

Scores Received on April 13<sup>th</sup>



# Projects Scores Rank

- 1 Siler City Airport runway extension and parallel taxiway
- 2 E 3rd Street Sidewalk in Siler City
- 3 Chatham Avenue Sidewalk in Siler City
- 4 NC 751 widening
- 5 Downtown Siler City Pedestrian Improvements
- 6 Pittsboro Moncure Road modernization improvements
- 7 2nd Avenue Road Diet in Siler City
- 8 Improvements to Sanford Rd (US 15-501) in Pittsboro
- 9 Hamlets Chapel/Jones Ferry Rd
- 10 NC 87
- ~~11 Improvements to W 11th St (US 64) in Siler City\*\*\*\*\*~~
- ~~12 US 64 Interchange~~







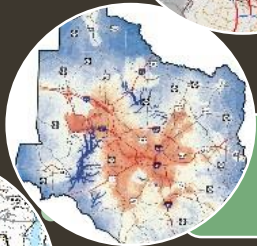
*Board Action: Approve TAC recommended methodology for SPOT 4.0 ranking for TARPO Local Point Allocation and SPOT Project Ranking list*



# Transportation Planning Process



Simultaneous Update Cycle of 3-4 years. Local Government & Public Input during various stages.



Local Plans

Conceptual Long Range Plan

Traffic and Travel Demand Data

Fiscally Constrained Plan

Prioritization (STI Funding & SPOT)

Programing of Funding

Design, Right of Way, Construction



# *In Process*

- Replacement of utilities, water service, hydrants, fiber optics, drainage, banks/ditches excavation, tree clearing, sign/mailbox, curb and gutter, sidewalk replacement
- Estimated total cost of Project
- Contracting with a prequalified firm
- Resurfacing Budget
- Purchase/Acquisition of Right of Way

Mt. Carmel Church Rd & Mann's Chapel Rd

## *Bike Lanes*





# Bridge 147

Chatham Church Rd over the Rocky River



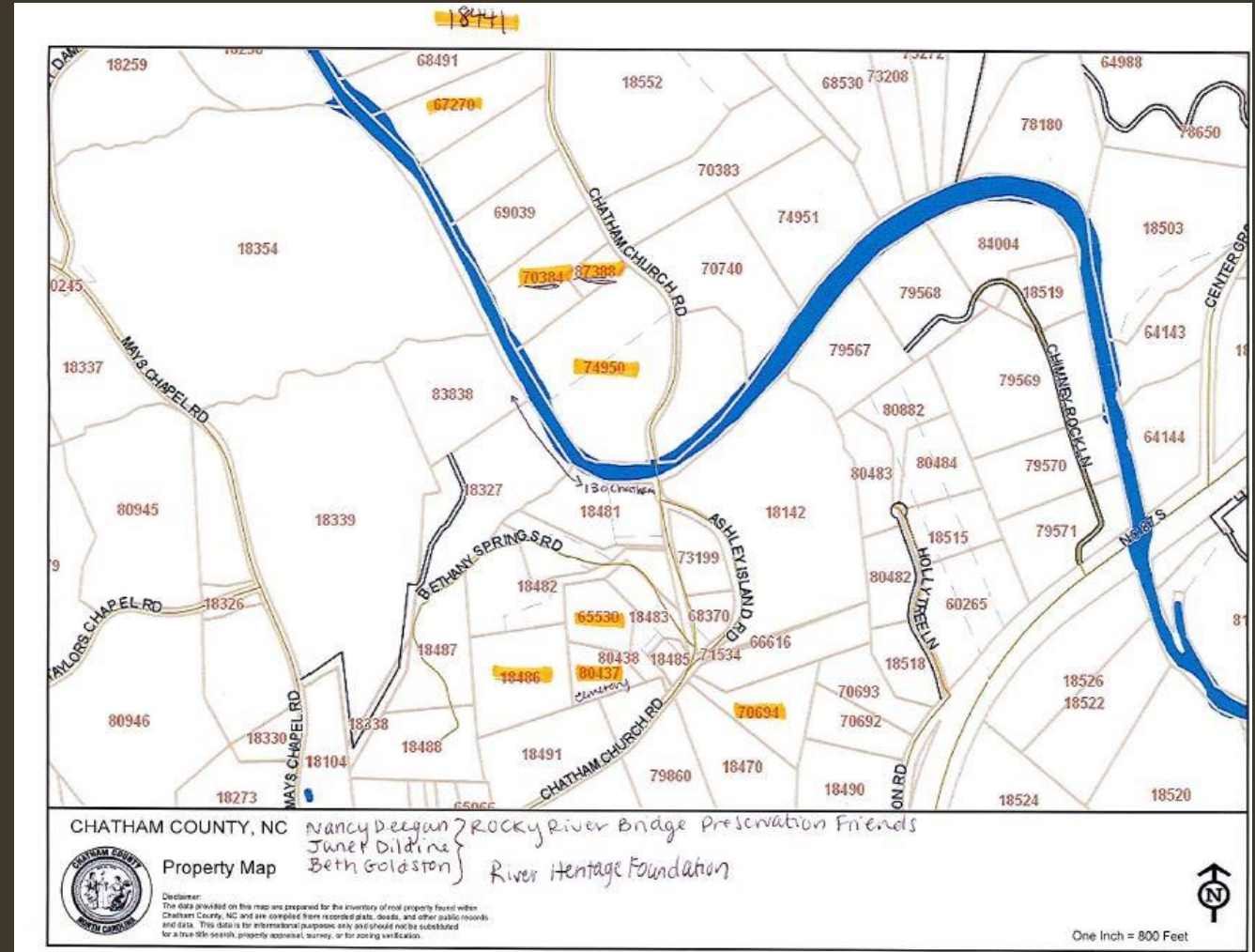
01.29.2016

01.29.2016



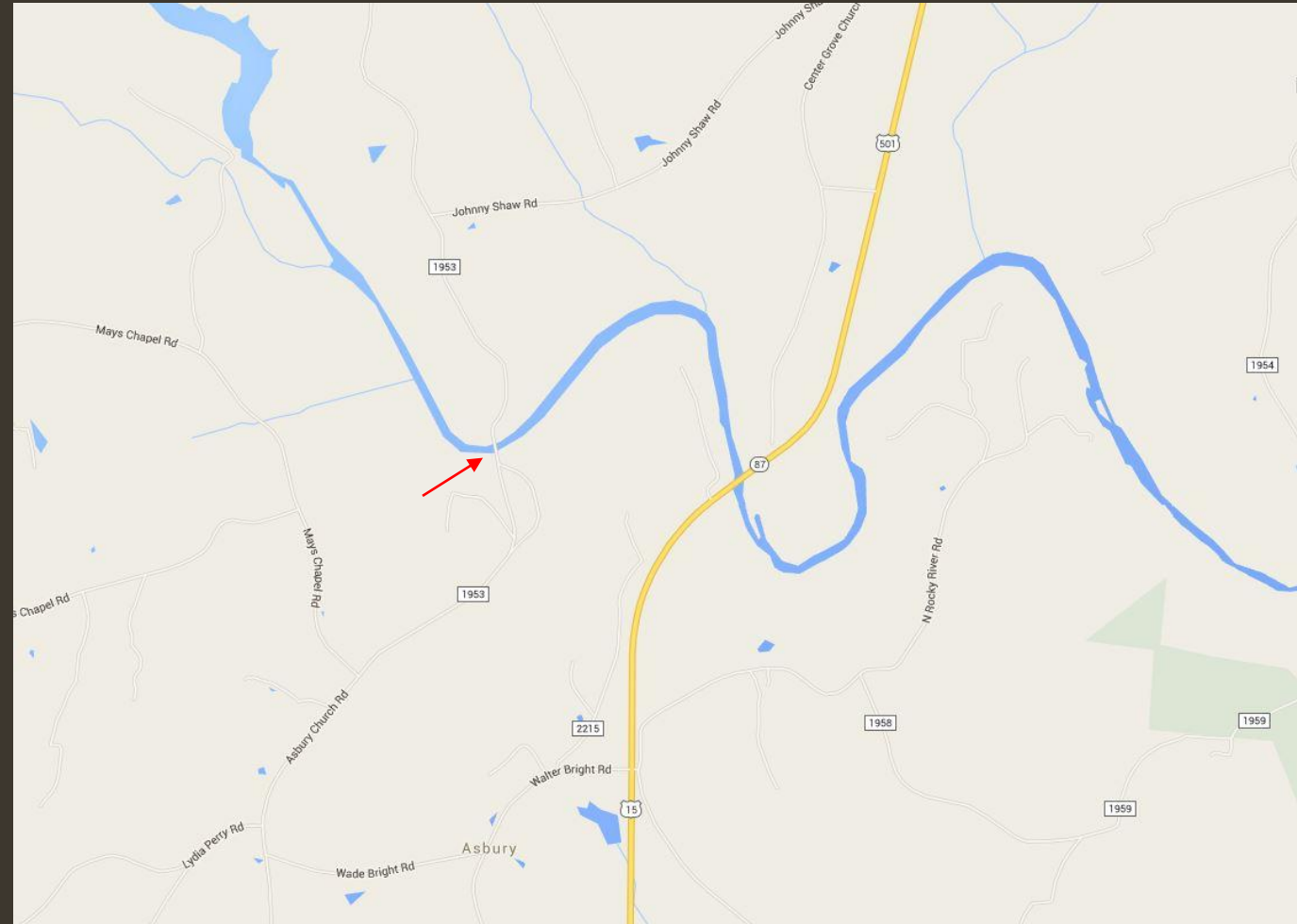
# Concerns and Considerations

- ❖ Bike, Sidewalk, and Greenway Accommodations (on and under bridge)  
Quality of life
- ❖ Environmental/Pollution Concern
  - ❖ Significant Natural Heritage Area & Cape Fear Shiner
  - ❖ Tree clearing
- ❖ Historical Concern
  - ❖ Constructed in 1920's, preservation of Chatham's character
  - ❖ Graveyard
- ❖ Landownership Concern
  - ❖ ROW required and exact location of replacement
- ❖ Pavement, Safety (mph), and Traffic increase concern (cut through traffic)





## ➤ Seeking Official Comment from Board



Options in support or objection to replacement:

1. Replace the bridge to keep full level of service.
2. Keep the bridge, but close it off to automobile traffic and build a new one beside it over the river
3. Close bridge to automobile traffic all together since there is an alternate route over the Rocky River using NC87/15-501.

\*\*If any of the options involve keeping the bridge as is, it would require an entity to take over the liability and maintenance of the Rocky River Bridge.\*\*

# TAC Recommendation:

"Based on concerns raised by residents of the area on Chatham Church Road near the single-lane bridge spanning the Rocky River, The Transportation Advisory Committee recommends that the Board of County Commissioners request additional information from the NC Department of Transportation regarding the feasibility of various options for keeping, closing, or replacing the current bridge, the environmental impacts of building a new bridge, and current traffic counts at the existing bridge. The residents who attended the TAC meeting on April 7<sup>th</sup> did not perceive any urgent need to replace the current bridge".





Board Action: *Request for Official  
Comment*







# Summary of Board Actions

1. CTP steps to adoption
  2. SPOT methodology and staff rank
  3. Bridge 147 official comment
- 



A scenic landscape featuring a river with numerous rocks in the foreground. In the middle ground, a concrete bridge with several pillars spans across the river. To the right of the bridge, a small dam or weir is visible, with water cascading over it. The background is filled with a dense forest of green trees under a clear sky. The overall scene is peaceful and natural.

Questions?